

TOWN OF TRUMBULL, CONNECTICUT

CONTRACT DRAWINGS FOR

SEWER SYSTEM REHABILITATION

PROJECT 1: AREA A & AREA B

DECEMBER 2016

BID SET No. _____

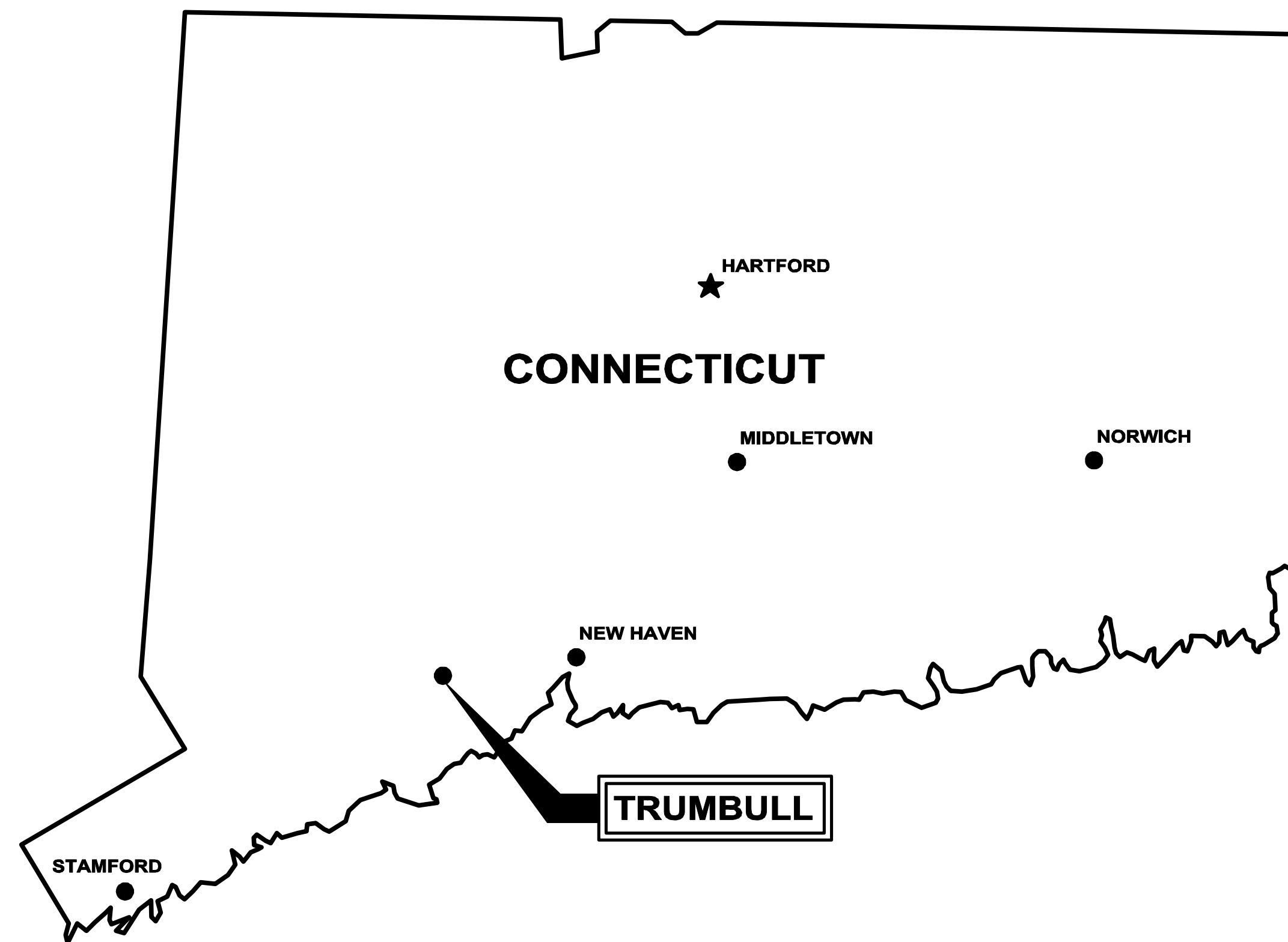
DRAWING INDEX

GENERAL

--- COVER SHEET

CIVIL

C-1	GENERAL NOTES, LEGEND, ABBREVIATIONS, AND DETAILS
C-2	PLAN - AREA A PIPE REHABILITATION
C-3	PLAN - AREA A MANHOLE REHABILITATION
C-4	PLAN - AREA B PIPE REHABILITATION
C-5	PLAN - AREA B MANHOLE REHABILITATION



WRIGHT-PIERCE 
Engineering a Better Environment

Offices Throughout New England
888.621.8156 | www.wright-pierce.com

FOR REVIEW _____

FOR BIDDING _____

WP PROJECT No. 13017B

SEWER GENERAL NOTES

1. THE CONTRACTOR IS REFERRED TO SECTION 01050 OF THE SPECIFICATIONS REGARDING COORDINATION WITH OTHERS, INCLUDING RESPONSIBILITIES AND RELATED COSTS.

2. BELOW GRADE UTILITY INFORMATION IS NOT SHOWN. LOCATION OF PUBLIC UTILITIES SHOWN IS ONLY APPROXIMATE AND MAY NOT BE COMPLETE. PRIVATE UNDERGROUND UTILITIES SUCH AS, BUT NOT LIMITED TO, SEWER LINES, WATER LINES AND BURIED ELECTRICAL SERVICE ENTRANCES ARE NOT SHOWN. THE CONTRACTOR SHALL ASCERTAIN THE LOCATION AND SIZE OF EXISTING UTILITIES IN THE FIELD WITH THE RESPECTIVE UTILITY COMPANY REPRESENTATIVE PRIOR TO COMMENCING WORK. STATE LAW REQUIRES THE CONTRACTOR TO NOTIFY "CALL BEFORE YOU DIG" AT 1-800-922-4455 PRIOR TO EXCAVATION. REFER TO SPECIFICATION SECTION 01050.

3. THE CONTRACTOR IS SOLELY RESPONSIBLE FOR DETERMINING ACTUAL FIELD LOCATIONS OF UTILITIES AND PROTECTING AND SUPPORTING THEM FROM DAMAGE ACCORDING TO UTILITY COMPANY SPECIFICATIONS.

4. ACCESS AND UTILITIES TO EXISTING OCCUPIED BUILDINGS MUST BE MAINTAINED AT ALL TIMES.

5. DURING CONSTRUCTION OF THE PROJECT WORK, THE CONTRACTOR SHALL BE SOLELY RESPONSIBLE FOR THE MAINTENANCE OF SANITARY SEWER FLOWS FOR BOTH MAINLINE AND LATERAL FLOWS.

6. ALL DIMENSIONS ARE TO BE CHECKED AND VERIFIED IN THE FIELD BY THE CONTRACTOR PRIOR TO ANY CONSTRUCTION. ANY DEVIATION FROM PLAN INFORMATION SHALL BE REPORTED TO THE ENGINEER IMMEDIATELY.

7. THE CONTRACTOR SHALL CONFINE OPERATIONS AND ACTIVITIES FOR CONSTRUCTION PURPOSES WITHIN THE STREET LINES AND WORKING EASEMENT LINES. SHOULD THE CONTRACTOR REQUIRE ADDITIONAL CONSTRUCTION EASEMENTS OR ACCESS RIGHTS, THE CONTRACTOR SHALL OBTAIN THEM AT HIS OWN EXPENSE AND FORWARD COPIES TO THE ENGINEER.

8. THE CONTRACTOR IS REQUIRED TO DO THE WORK OF THE CONTRACT IN ACCORDANCE WITH THESE PLANS AND SPECIFICATIONS IN A SAFE AND ORDERLY MANNER WITH RESPECT TO PUBLIC SAFETY.

9. ALL EXISTING SEWER AND STORM DRAIN LINES ENCOUNTERED DURING CONSTRUCTION ARE TO REMAIN IN SERVICE. ANY EXISTING SEWERS, STORM DRAIN LINES OR CULVERTS DAMAGED BY THE CONTRACTOR OR HIS SUBCONTRACTORS DURING CONSTRUCTION SHALL BE PROMPTLY REPAIRED BY THE CONTRACTOR TO THE SATISFACTION OF THE ENGINEER AND AT NO ADDITIONAL COST TO THE OWNER.

10. ALL UTILITY STRUCTURES AND PIPELINES LOCATED ADJACENT TO AN EXCAVATION SHALL BE PROTECTED AND FIRMLY SUPPORTED BY THE CONTRACTOR UNTIL THE EXCAVATION IS BACKFILLED. INJURY TO ANY SUCH STRUCTURES OR PIPELINES CAUSED BY, OR RESULTING FROM, THE CONTRACTOR'S OR HIS SUBCONTRACTOR'S OPERATIONS SHALL BE PROMPTLY REPAIRED AT THE CONTRACTOR'S EXPENSE, AND TO THE SATISFACTION OF THE AFFECTED UTILITY COMPANY. ALL UTILITIES REQUIRING REPAIR, RELOCATION OR ADJUSTMENT AS A RESULT OF THE PROJECT SHALL BE COORDINATED THROUGH THE RESPECTIVE UTILITY.

11. CONTRACTOR SHALL INSTALL AND MAINTAIN TRAFFIC CONTROL SIGNS IN ACCORDANCE WITH TOWN AND CTDOT REQUIREMENTS.

12. THE CONTRACTOR IS RESPONSIBLE FOR MAINTAINING TRAFFIC FLOW AT ALL TIMES. THE CONTRACTOR IS REQUIRED TO SUBMIT A TRAFFIC CONTROL PLAN TO THE OWNER FOR APPROVAL PRIOR TO COMMENCING CONSTRUCTION. THE TRUMBULL POLICE DEPARTMENT (203-261-3665) AND TRUMBULL FIRE MARSHAL (203-452-5080) ARE TO BE NOTIFIED AT LEAST 24 HOURS IN ADVANCE OF ANY STREET CLOSING OR DETOUR. REFER TO SPEC. SECTION 01570.

13. CONNECTICUT STATE HIGHWAYS: THE FOLLOWING ROADWAYS FALL WITHIN THE JURISDICTION OF THE CONNECTICUT DEPARTMENT OF TRANSPORTATION (CTDOT). ALL WORK CONDUCTED WITHIN THESE ROADWAYS MUST CONFORM TO CTDOT STANDARDS, INCLUDING BUT NOT LIMITED TO, OBTAINING ALL PERMITS, BONDS AND INSURANCES. CONNECTICUT STATE HIGHWAYS WITHIN THE PROJECT AREA ARE AS FOLLOWS:

MAIN ST. (RTE. 111) DISTRICT 3 TEL 203.389.3010

14. THE CONTRACTOR WILL BE RESPONSIBLE FOR OBTAINING ALL PERMITS REQUIRED FOR PERFORMANCE OF ALL WORK ON THIS CONTRACT. IT IS THE RESPONSIBILITY OF THE CONTRACTOR TO BE FAMILIAR WITH THE APPLICABLE PROVISIONS OF EACH PERMIT AS THEY APPLY TO THE WORK PRIOR TO BIDDING AND ABIDE BY THOSE PROVISIONS DURING CONSTRUCTION. ALL REQUIRED PERMITS SHALL BE OBTAINED PRIOR TO BEGINNING WORK.

15. THE OWNER SHALL BE RESPONSIBLE FOR OBTAINING ALL NECESSARY RIGHTS OF WAY AND EASEMENTS, WHERE REQUIRED. THE CONTRACTOR SHALL VERIFY THAT THE NECESSARY EASEMENTS HAVE BEEN SECURED BY THE OWNER. IT IS THE RESPONSIBILITY OF THE CONTRACTOR TO BE FAMILIAR WITH THE APPLICABLE PROVISIONS OF EACH EASEMENT AS THEY APPLY TO THE WORK PRIOR TO BIDDING AND ABIDE BY THOSE PROVISIONS DURING CONSTRUCTION. COPIES OF ALL RIGHTS-OF-WAY AND EASEMENTS ARE AVAILABLE FOR REVIEW FROM THE TOWN.

16. THE CONTRACTOR SHALL BE RESPONSIBLE FOR THE PREVENTION OF EROSION. ALL DISTURBED EARTH SURFACES ARE TO BE STABILIZED IN THE SHORTEST PRACTICAL TIME. THE CONTRACTOR SHALL DISPOSE OF UNSUITABLE EXCAVATED MATERIAL AT A SITE PROVIDED BY HIM WHICH IS IN COMPLIANCE WITH ALL STATE AND LOCAL LAWS. ALL SEDIMENT AND EROSION CONTROL MEASURES SHALL CONFORM TO THE "2002 CONNECTICUT GUIDELINES FOR SOIL EROSION AND SEDIMENT CONTROL".

17. COMPACTION TESTS SHALL BE PERFORMED IN ACCORDANCE WITH SPECIFICATION SECTION 02200 AND 01400. ANY SETTLEMENT OCCURRING WITHIN THE WARRANTY PERIOD WILL BE CORRECTED BY THE CONTRACTOR TO THE SATISFACTION OF THE ENGINEER AND AT NO ADDITIONAL EXPENSE TO THE OWNER.

18. OPEN EXCAVATIONS MUST BE BACKFILLED AT THE END OF THE WORKDAY. BITUMINOUS CONCRETE PAVEMENT SHALL BE RESTORED BY THE END OF THE WEEK ON TOWN ROADS. ON CTDOT ROADS, EXCAVATIONS SHALL BE PAVED DAILY.

19. CONTRACTOR SHALL CONTROL DUST TO A TOLERABLE LIMIT AS OUTLINED IN SPECIFICATION SECTION 01562. CONTRACTOR SHALL NOT TRACK OR SPILL EARTH AND DEBRIS ON PUBLIC STREETS OUTSIDE THE PROJECT AREA. STREETS OPENED TO THE PUBLIC SHALL BE KEPT SWEEPED AND FREE OF DEBRIS.

20. THE CONTRACTOR SHALL BE RESPONSIBLE FOR RESETTling ALL EXISTING PROPERTY MONUMENTATION THAT IS DISTURBED BY HIS OPERATIONS AT NO EXPENSE TO THE OWNER. THIS WORK IS TO BE DONE BY A LAND SURVEYOR REGISTERED IN THE STATE OF CONNECTICUT.

21. THE CONTRACTOR SHALL COMPLY WITH ALL APPLICABLE REGULATIONS OF THE OCCUPATIONAL SAFETY AND HEALTH ADMINISTRATION (OSHA).

22. THE CONTRACTOR SHALL NOT HAVE ANY RIGHT OF PROPERTY IN ANY MATERIALS TAKEN FROM ANY EXCAVATION. SUITABLE EXCAVATED MATERIAL MAY BE INCORPORATED IN THE PROJECT, WITH EXCESS MATERIAL DISPOSED OF AT A LOCATION PROVIDED BY THE CONTRACTOR. THESE PROVISIONS SHALL IN NO WAY RELIEVE THE CONTRACTOR OF HIS OBLIGATIONS TO PROPERLY DISPOSE OF AND REPLACE ANY MATERIAL DETERMINED BY THE ENGINEER TO BE UNSUITABLE FOR BACKFILLING. THE CONTRACTOR SHALL DISPOSE OF UNSUITABLE AND EXCESS MATERIAL IN ACCORDANCE WITH THE APPLICABLE SECTIONS OF THE CONTRACT DOCUMENTS.

23. REFER TO SPECIFICATION SECTION 01010, WHICH CONTAINS INFORMATION ON CONSTRAINTS OF CONSTRUCTION SEQUENCING.

24. CONTRACTOR SHALL REMOVE AND REPLACE, OR REPAIR, ALL CURBS, SIDEWALKS, PAVEMENT, GRASSED AREAS AND OTHER STRUCTURES, FEATURES AND SURFACES DAMAGED OR DISTURBED BY HIS CONSTRUCTION ACTIVITIES TO AT LEAST THEIR ORIGINAL CONDITION, TO THE SATISFACTION OF THE ENGINEER AND AT NO ADDITIONAL COST TO THE OWNER.

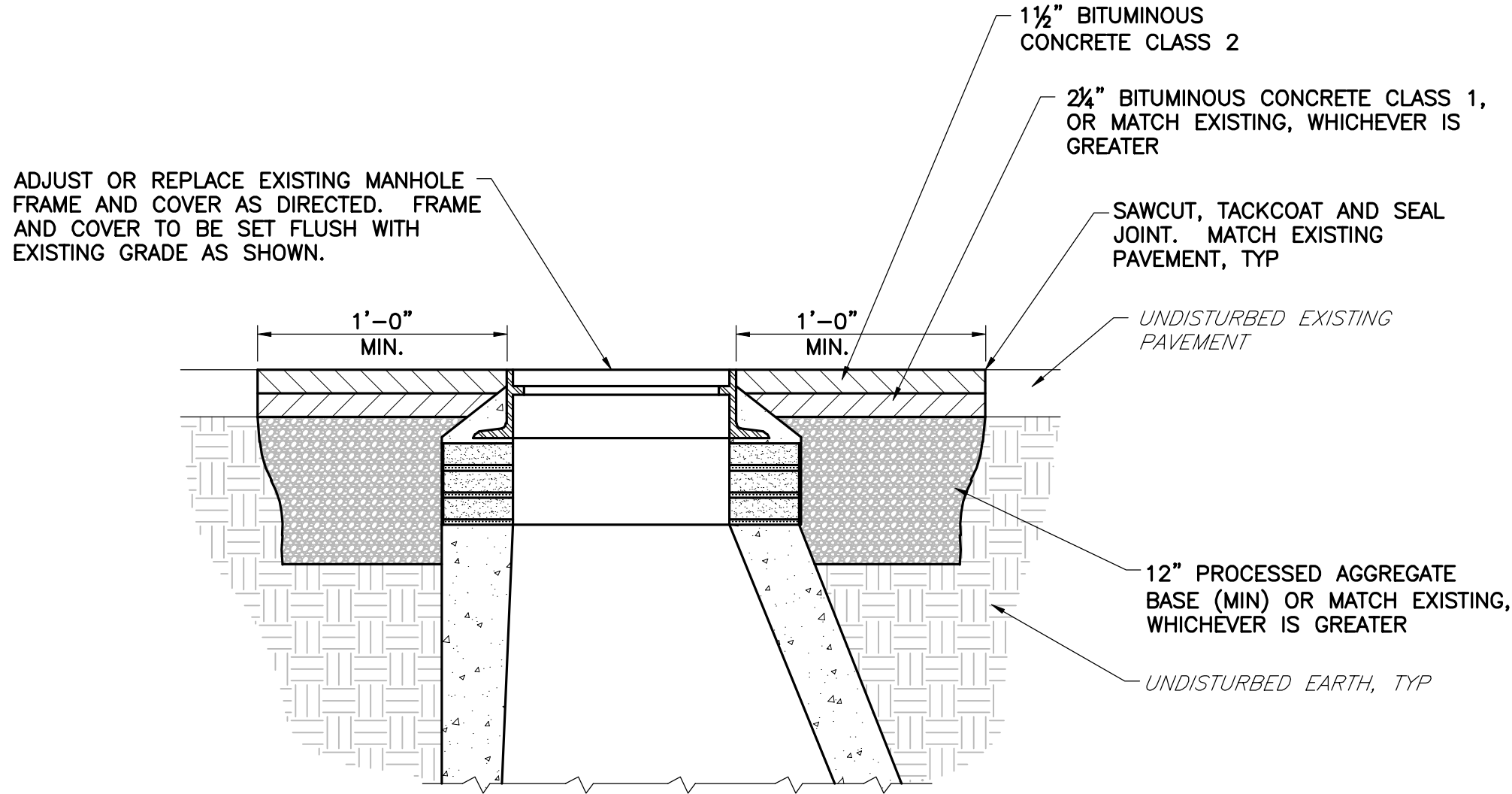
25. ALL EXISTING MANHOLES AND CATCH BASINS THAT ARE AFFECTED BY THE CONTRACTOR'S ACTIVITIES SHALL BE CLEANED AND MADE OPERATIONAL BY THE CONTRACTOR TO THE SATISFACTION OF THE ENGINEER AND AT NO ADDITIONAL COST TO THE OWNER.

26. WHERE EXISTING PAVEMENT IS REMOVED AND REPLACED, MATCH EXISTING GRADES TO THE EXTENT POSSIBLE. COORDINATE FINE GRADING WITH THE ENGINEER.

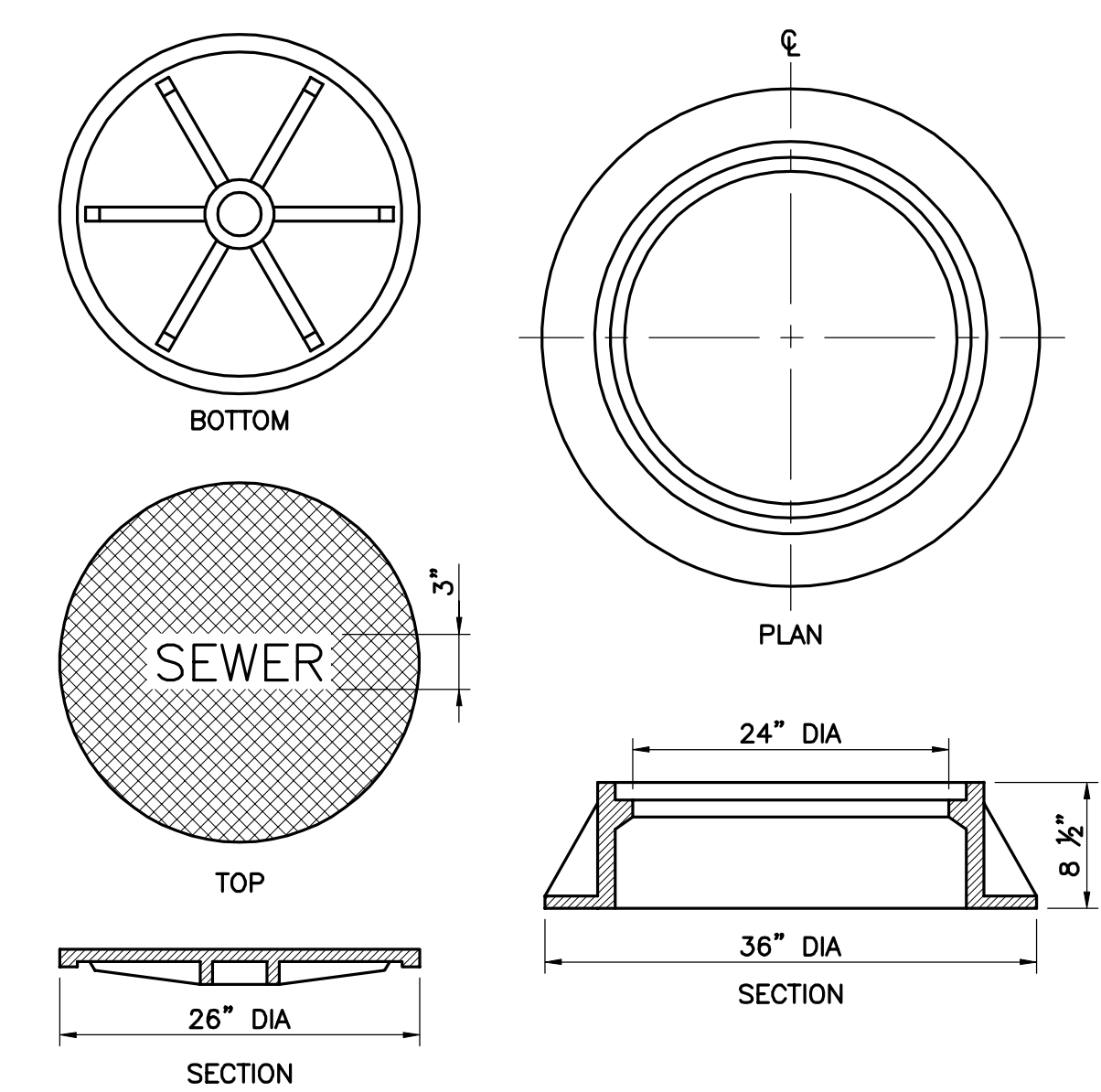
ABBREVIATIONS:

(SEE SPEC. SECTION 01070 FOR ADD'L INFORMATION)

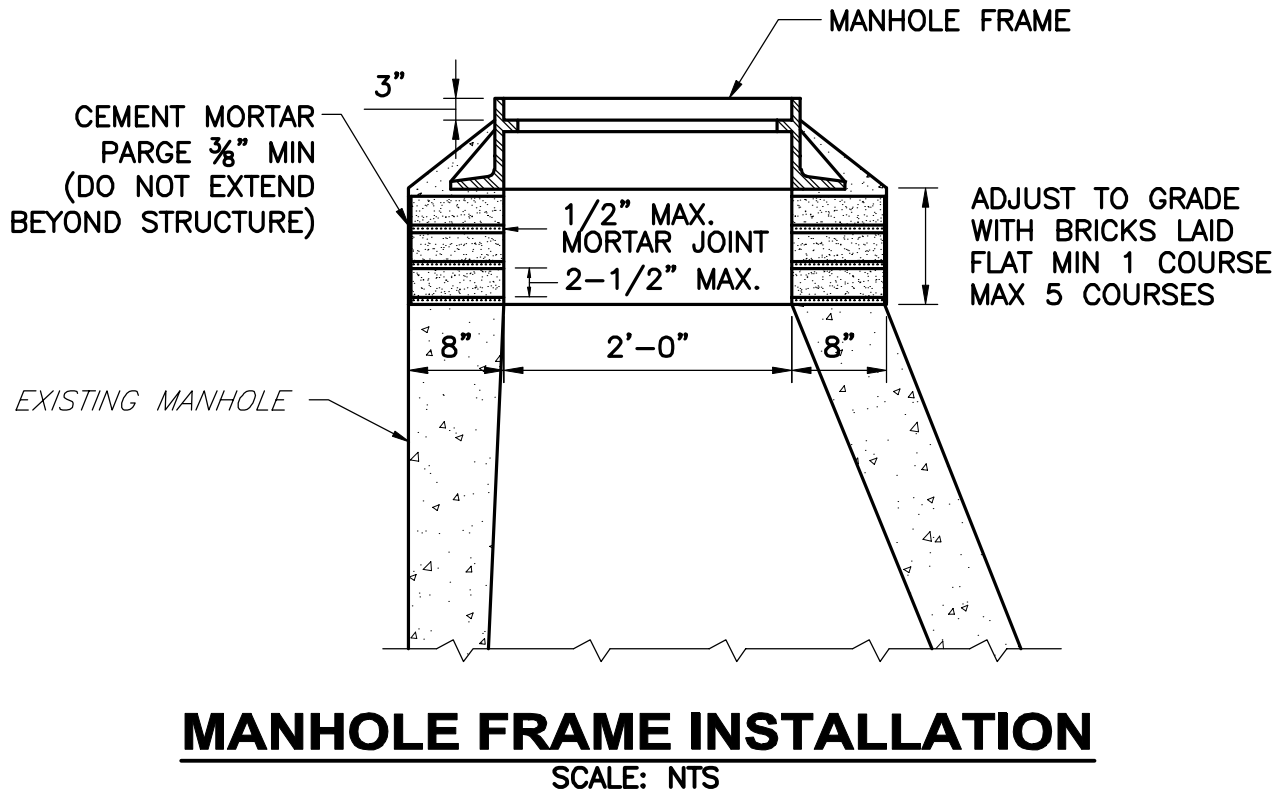
&	AND
AVE.	AVENUE
CL	CENTER LINE
CIR.	CIRCLE
CT ECO	CONNECTICUT ENVIRONMENTAL CONDITIONS ONLINE
CT DEEP	CONNECTICUT DEPARTMENT OF ENERGY AND ENVIRONMENTAL PROTECTION
CT DOT	CONNECTICUT DEPARTMENT OF TRANSPORTATION
DIA.	DIAMETER
DR.	DRIVE
LN.	LANE
MAX.	MAXIMUM
MIN.	MINIMUM
NTS	NOT TO SCALE
OSHA	OCCUPATIONAL SAFETY AND HEALTH ADMINISTRATION
PL	PLACE
RD.	ROAD
ROW	RIGHT OF WAY
RTE.	ROUTE
SPEC.	SPECIFICATION
ST.	STREET
TEL.	TELEPHONE
TYP.	TYPICAL



PAVEMENT RESTORATION
SCALE: NTS




NOTE:
MANHOLE FRAME AND COVER SET SHALL BE CAMPBELL FOUNDRY NO. 1047
MANHOLE STANDARD COVER AND FRAME
SCALE: NTS



MANHOLE FRAME INSTALLATION
SCALE: NTS

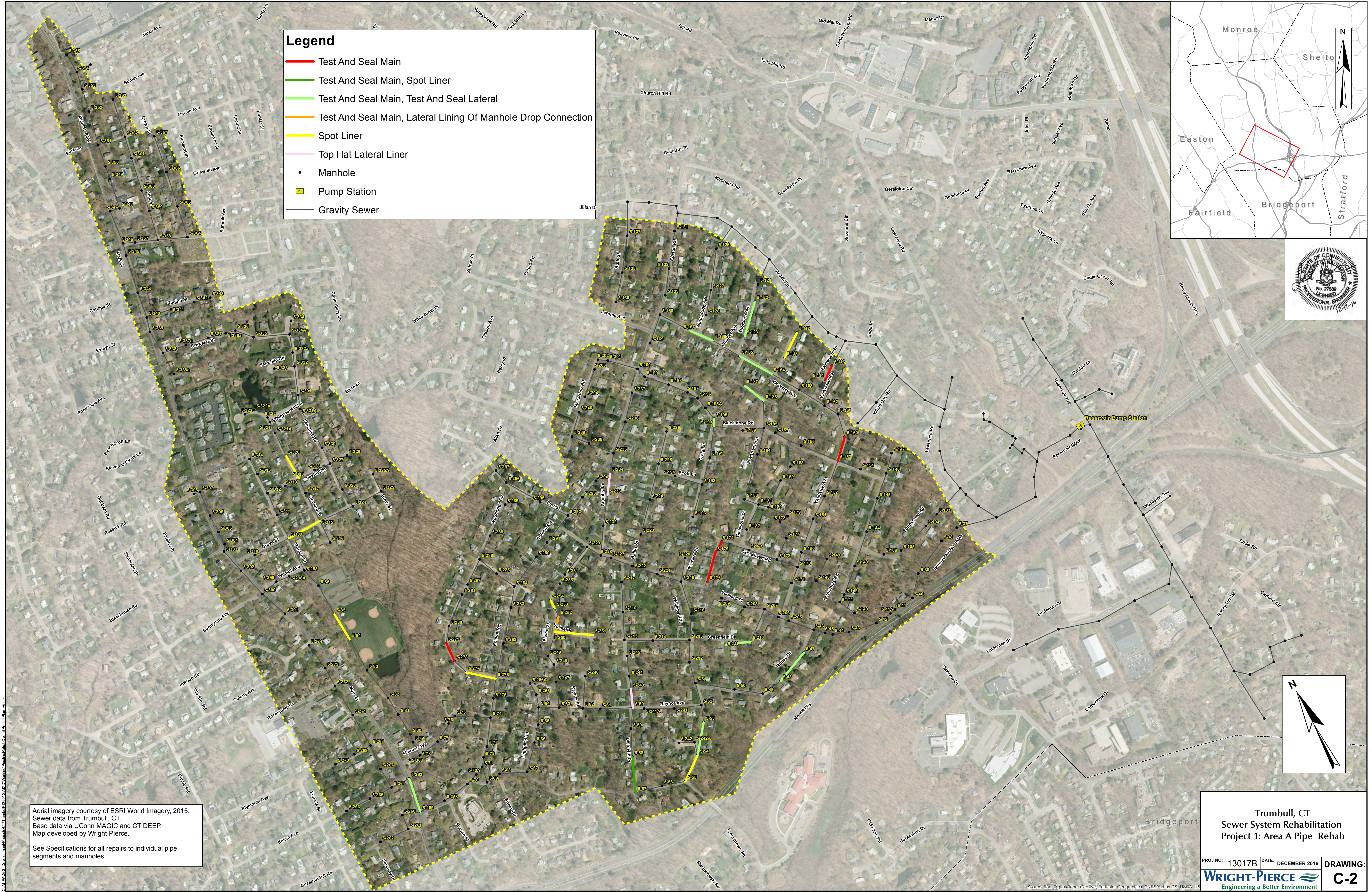
DESIGNED BY: NLO		SUBMISSIONS/REVISIONS		DATE	
CAL. COORD.: SMC		100% CONTRACT DRAWINGS -- 2015-06-18		APP'D	
CHECKED BY: LCH				CEK 06-15	
DATE: 06-18-15					
APPROVED BY: CEK					
DATE: 06-18-15					
PROJECT NO.: 13071B					

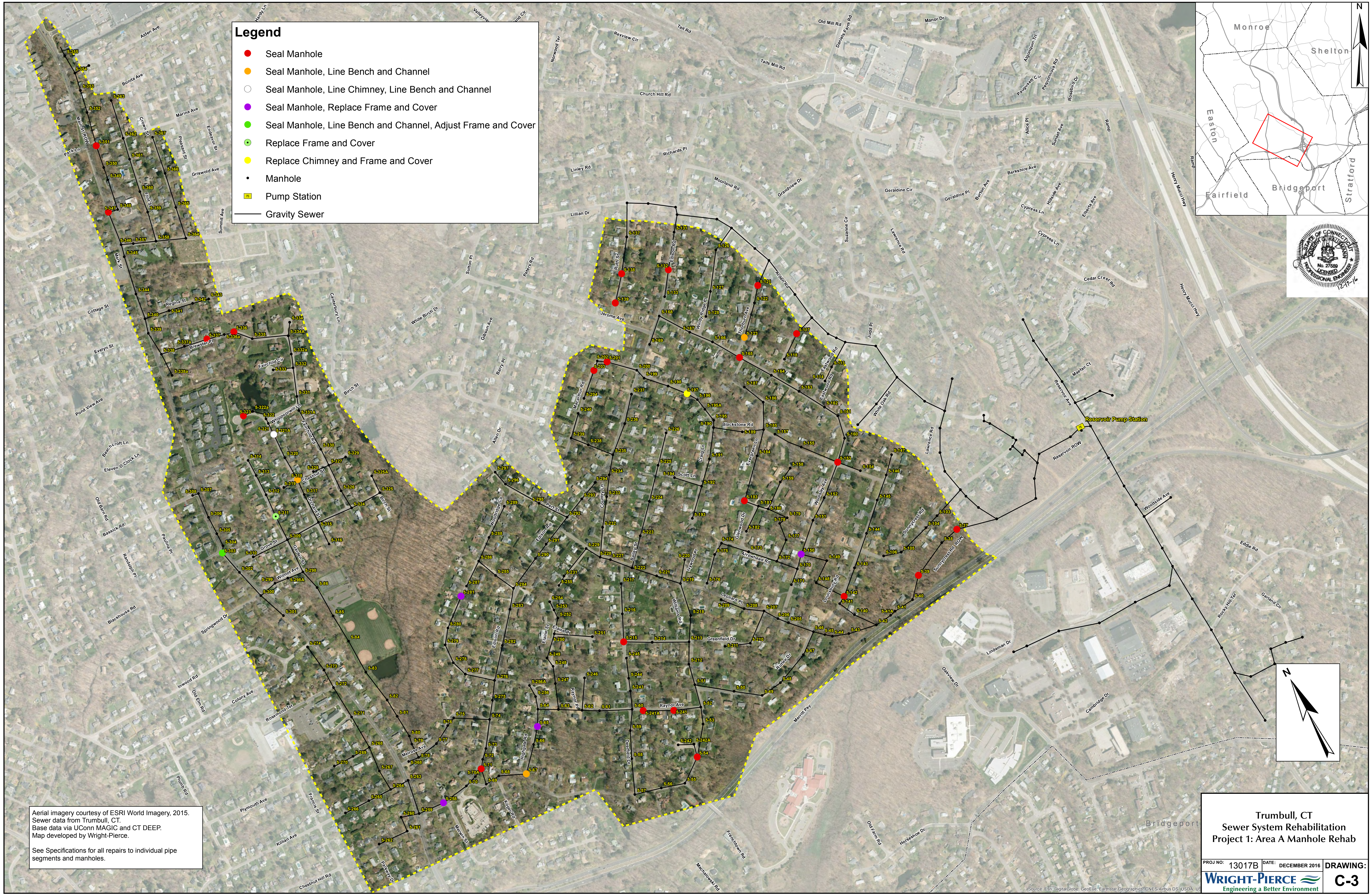


WRIGHT-PIERCE
Engineering a Better Environment
Offices Throughout New England | www.wright-pierce.com
888.621.8156

TOWN OF TRUMBULL, CONNECTICUT TRUMBULL, CONNECTICUT SEWER SYSTEM REHABILITATION	GENERAL NOTES, LEGEND AND ABBREVIATIONS
---	--

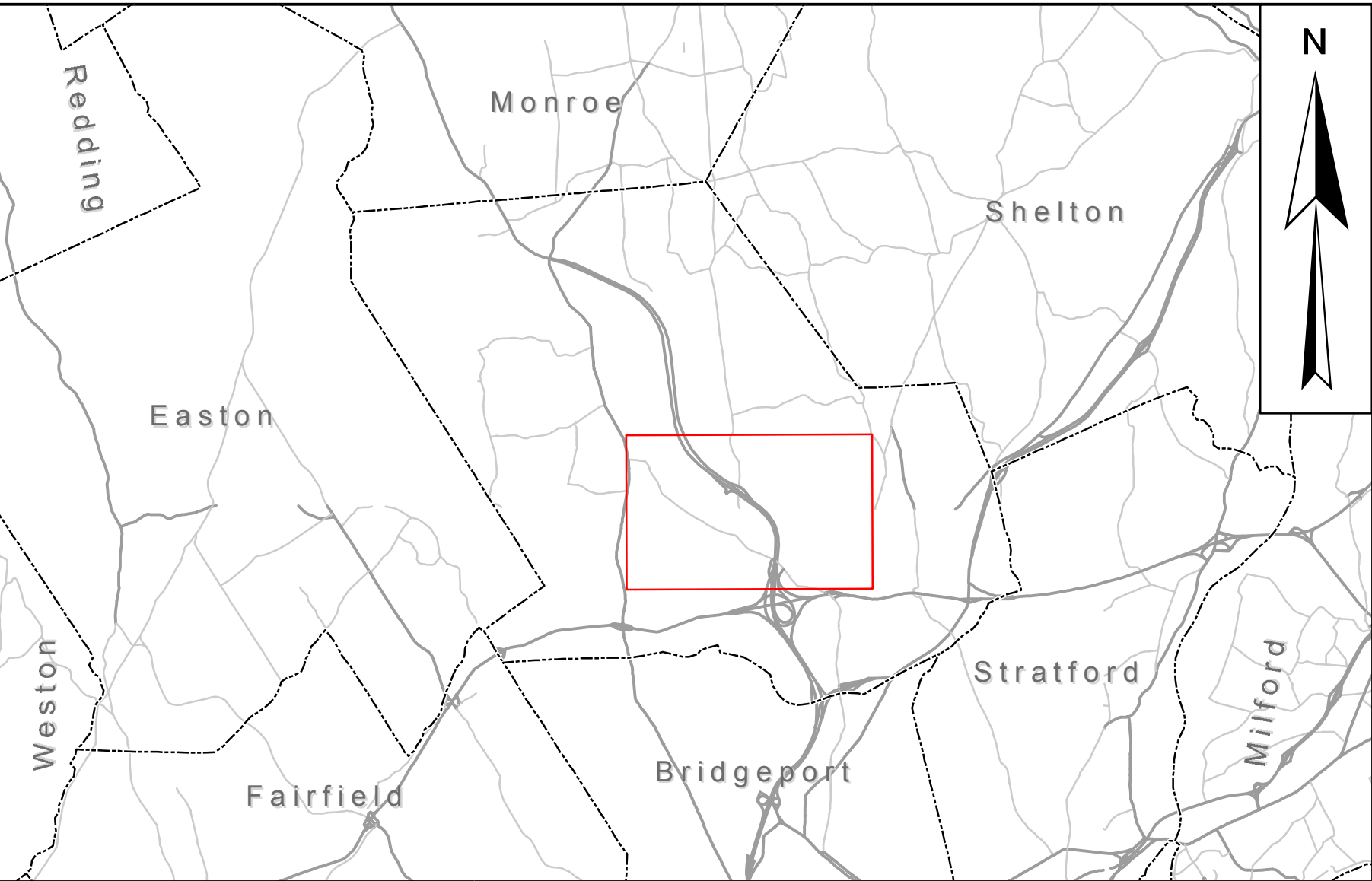
DRAWING
C-1





Aerial imagery courtesy of ESRI World Imagery, 2015.
Sewer data from Trumbull, CT.
Base data via UConn MAGIC and CT DEEP.
Map developed by Wright-Pierce.

See Specifications for all repairs to individual pipe segments and manholes.



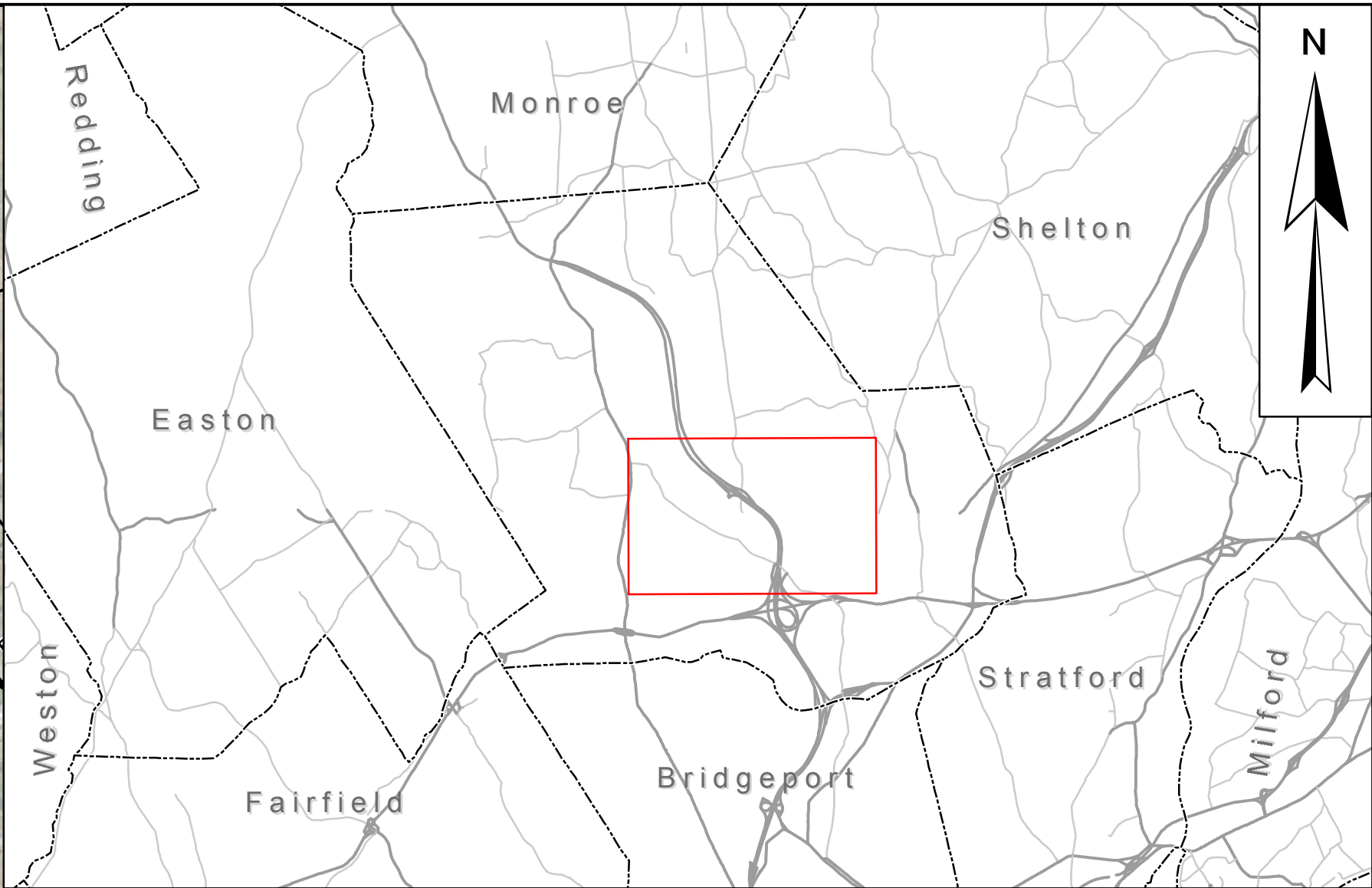
- Legend**
- Test And Seal Main
 - Test And Seal Main, Spot Liner
 - Test And Seal Main, Top Hat Lateral Liner
 - Test And Seal Main, Test And Seal Lateral, Spot Liner
 - Spot Liner
 - Spot Liner, Top Hat Lateral Liner
 - Top Hat Lateral Liner
 - Pump Station
 - Manhole
 - Sewer Main
 - Force Main



Trumbull, CT
Sewer System Rehabilitation
Project 1: Area B Pipe Rehab

Aerial imagery courtesy of ESRI World Imagery, 2015.
Sewer data from Trumbull, CT.
Base data via UConn MAGIC and CT DEEP.
Map developed by Wright-Pierce.

See Specifications for all repairs to individual pipe segments and manholes.



Legend

Seal Manhole

Seal Manhole, Line Bench and Channel

Seal Manhole, Line Manhole Walls, Line Bench and Channel

Seal Manhole, Replace Frame and Cover, Line Bench and Channel

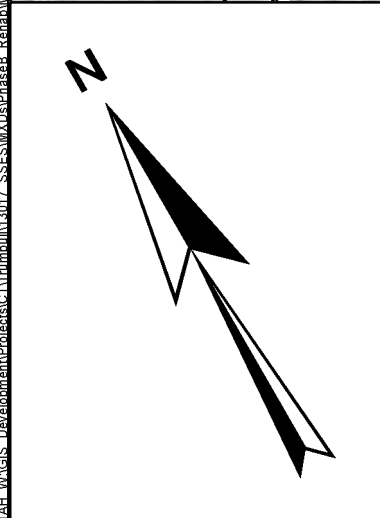
Seal Manhole, Replace Frame and Cover

Pump Station

Manhole

Sewer Main

Force Main



Trumbull, CT
Sewer System Rehabilitation
Project 1: Area B Manhole Rehab

PROJ NO: 13017B

DATE: DECEMBER 2016

DRAWING: C-5

WRIGHT-PIERCE

Engineering a Better Environment