

ADDENDUM NO. 3

TO

**PARK AVENUE PUMP REPLACEMENT
TOWN OF TRUMBULL, CONNECTICUT**

BIDDING AND CONTRACT REQUIREMENTS AND SPECIFICATIONS

FOR

PARK AVENUE PUMP REPLACEMENT

February 9, 2018

PREPARED BY:

**WRIGHT-PIERCE ENGINEERS
169 Main Street, 700 Plaza Middlesex
Middletown, Connecticut 06457**

ADDENDUM NO. 3

TOWN OF TRUMBULL, CONNECTICUT PARK AVENUE PUMP REPLACEMENT

As a point of clarification, it should be understood that the Contract Documents govern all aspects of the project. Informal discussions held during the Pre-Bid Conference, or over the telephone are informational only. All official changes to the Contract Documents are made only by addenda. The following changes and additional information are hereby made a part of the Contract Documents:

CLARIFICATIONS

1. Additional information is now available from the original station manufacturer, Dakota Pumps, and is included in this addendum for reference only. The manufacturer recommends building the new pump supports and extension off of the existing base to accommodate the pump location, welding to that base while minimizing the amount of welding to the existing floor.
2. The existing motor actuate plug valve (TYP 2) installed on the force main discharge piping are wired to an existing NEMA 4X box in the drywell. There is then a 9-pin connector cable from that box to the existing PLC. This NEMA 4X box, wiring and cabling shall be maintained and refed to the new PLC. All programming associated with the motor actuated valves will be conducted by Flygt under their scope of work.
3. Disregard the deletion of the check valve position switches stated in Addendum No. 2. Provide two (2) new check valve position indicator switches as part of the base bid and wire back to the new Control Panel (termination location will be provided during submittals). All programming associated with the switches will be conducted by Flygt under their scope of work. Position switches shall meet the following specification:

Position Switch: (ZS)

- a. The check valve limit switch shall be a hermetically sealed single contact limit switch.
- b. The switch shall utilize a side mounted adjustable lever with a spring return that can be adjusted to sense the closed position of the check valve swing arm.
- c. The switch contacts shall be rated NEMA B600 for AC.
- d. Provide a fabricated stainless steel bracket that mounts to one of the valve's flange bolts. The bracket will support the limit switch so that the switch will be activated by the check valve's swing arm when the valve is in the closed position.
- e. Hazardous Area Classification: NEMA 4X
- f. Equivalent to:
 - 1) Allen Bradley 802R Series Sealed Contact Switches
 - 2) Or Equal

Job
3027

DAKOTA PUMP

Water & Sewerage Handling Equipment

SUBMITTAL DATA FOR

APPROVED
MAR 23 1981
RECEIVED

Contract #11 Sanitary Sewer System
Job: Phase II - Trumbull, Conn. **Date:** 7/31/80
Location: Trumbull, Connecticut
Engineer: Flaherty-Giavara Associates
Contractor: Mark IV Construction Co., Inc.

File No. 7980-33-6

APPROVED

MARK IV CONSTRUCTION CO. INC.

B.T.P.

AUG 11 1980

DAKOTA PUMP INC.

Riverside Rd. Interchange I-90

P.O. Box 951 Mitchell, S. D. 57301

Phone 605, 996-6636

DAKOTA PUMP INCORPORATED

RIVERSIDE ROAD — MITCHELL, SOUTH DAKOTA 57301

P. O. BOX 951 — PHONE 605, 996-6636

Description and Schedule

Quote No. 7980-33-6

Job: Contract #11 Date: July 28, 1980

Name: Mark IV Construction Co. Location: Trumbull, Conn.

Conditions: 490 gpm to 335 gpm ft. to ft. TDH

Finished Grade Elev. 144.25' Footing Elev. 108.33'

Influent Elev. Invert 110.00' Discharge Elev. Through top of chamber

Overall Vertical Dim. 37.92' Elev. Top of Access Tube 146.25'

ITEM 100

EQUIPMENT CHAMBER

1/4" SAFETY MAT REQ'D

Skids I-Beam Type 8" Size 18.4#/ft. Wt.

Floor Plate Type 3/8" Size 15.3#/sq.ft. Wt.

Sump 20" Length 8" Depth 14" Width

Shell 11'-0" Dia. 9'-8" Height 1" Wall

Head Plate Type 3/8" Size 15.3#/sq.ft. Wall

Drip Ring NR " x " Lifting Hooks

Pump Hooks 1/2"x8" Size four (4) Thus Pump Bases as needed Type Size

Tube Flange 2 " x 2 " x 1/4"

Exterior Surface Preparation

(in contact with soil, water or both)

- ☐ A. Coal-tar epoxy-polyamide B 69B35mils Dry
- ☐ B. Coal tar applied asphalt mastic inches wet
- ☒ C. Proprietary Epoxy specifications base coat B69N701.5.....mils Dry
- intermediate and top coat B69GA704.5.....mils Dry

Interior and Exposed Exterior Surface

- ☒ A. Proprietary Epoxy specifications base coat B69N701.5.....mils Dry
- intermediate and top coats B69GA704.5.....mils Dry

Description and Schedule

Job: Contract #11 Date July 28, 1980

Name: Mark IV Construction Co.

ITEM 101

ACCESS TUBE

Tube 48 " Dia. $\frac{1}{4}$ " Wall 27 4 " Total Length
 Lower Flange $2\frac{1}{2} \times 2\frac{1}{2} \times \frac{1}{4}$ 53" O.D. Dia. 48" I.D. Dia.
 12 x 16 x 37'-7" * x Ladder 1" square Rungs $\frac{1}{2} \times 1\frac{1}{2}$ " channel Rails
 Vent Tube 4" diameter x 27'-0" " x "
 Sump Discharge $1\frac{1}{4}$ " Galv. Type Blkh d Fitting Welded nipple through sump
 Hatch 50" steel, epoxy coated, spring assisted, w/drip lip
 Rim Gasket Continuous Silicone Rubber Type Lock T-handle w/5 disc. tumbler Type
 Cover Switch Hatch-activated & Manual Type Conduit $\frac{1}{2}$ " EMT

*A safety landing will be supplied halfway down from the top (epoxy coated steel)

ITEM 102

LIGHTS & BLOWERS

PIPING AND VALVES

ALUMINUM

Influent Pipe	6	" Dia. Class 50 Ductile	Type	Plain End	Fitting
Influent Valves	6	" DeZurik	Make	Eccentric Plug	Type
Check Valves	4	" x 6	" M&H	Make Lever & Spring	Type
Discharge Valves	6	" Clow	Make	List 14 Gate	Type
Discharge Manifold	6	" x 6	" x 6	" SOE	Type
Discharge Pipe	6	" Dia. Class 50 Ductile	Type	Plain End	Fitting
Pipe Support	Floor chairs		Gaskets	Rubber/asbestos ring type	
Bulkhead Fittings	$\frac{1}{4}$ " steel sleeves with concrete/embecco grout.				

Recirculation Scheme

Recirculation Regulator NR "
 Gate Valves " Pipe " Type Fittings " Type

Sump Pump Piping

Flexible Connection NR "
 Check Valves (2) $1\frac{1}{4}$ " Gate Valves (1) $1\frac{1}{4}$ " All Bronze
 Piping $1\frac{1}{4}$ " Schedule 40 steel. (GALV.)

Exterior Piping

(Furnished on request only)

Sump Discharge Piping

T-Y Fitting, 90° Bends

1/4" Poly Tube (ample supply furnished to reach from control to W.W.)

Remarks

Description and Schedule

Job: Contract #11 Date July 28, 1980

Name: Mark IV Construction Co.

SUBMIT
DATA

ITEM 103

PUMPS

Pumps Four (4) Thus 4 " Suction 14.0 " Max. Impellor 4 " Discharge
Type Non-Clog Make Allis-Chalmers Model 400, 4x4x14
CI Impellor " Dia. 1750 RPM Mechanical Seal
50m filtered water Lub. Scheme NR Wear Ring HGS w/ SS Sleeve Shaft

Motors and Drives

Four (4) Thus 40 H.P. FR. 1750 RPM ~~RPM~~ ODP Type
3ø / 60 hz. / 480 volts Volt
Drive Flex-coupled Driver Dia. Driven Dia.
CLOSE

ITEM 104

CATHODIC PROTECTION

Sac. Anode Type Four (4) Thus 17# Packaged Magnesium
Type Thus

ITEM 105

POWER AND CONTROL CENTER

Panel Locking Switch Amps Pole
Main Breaker By others on pole Amps Pole
Motor Breaker Four (4) Thus 90 amp, 3-pole
NEMA I Enclosures
Four (4) Furnas size '3' starters of the auto-transformer type.
Auxiliary Circuit Breakers
Lights & fan 15 Amps 1 Pole Controls 15 Amps 1 Pole
Compressors 15 Amps 1 Pole Conv. Outlet 15 Amps 1 Pole
Dehumidifier 15 Amps 1 Pole Heater 20 Amps 2 Pole
Sump PUMP 15 Amps 1 Pole Amps Pole
Amps Pole Amps Pole
Amps Pole Amps Pole
Alternator Diversified No. ARA-120-ADA Type Elapsed Time Meter (2) Engler six-digit
Interval Timer Dayton 2E209 Type Bubbler Flo Meter Dwyer Model 500 Type
Depth Indicator 0-160" No. 2 1/2" dial, Marshalltown Fig. 83B Type
Air Pumps Two (2) No. ITT Type Oilless, both mounted on (1) 2 gal. tank
Alarm Gear Contacts only for: LWL, HWL, Low Air Pressure, High Drywell,
Power failure, Pump failure (Seal water failure incorporated with Pump Failure)
One (1) UE J303 pressure switch for pump control (Lead, Lag, Shut-off)
B. Motor Wiring #6 AWG Conduit 1" EMT to 1" Sealtite
C. Lights Two (2) 100 watt incandescent with glass globes & cast guards.

A L A R M E Q U I P M E N T

One (1) UE J54S Pressure Switch for Low wetwell level.

One (1) UE J54S Pressure Switch for High wetwell level.

One (1) Furnas 69WA4 Pressure Switch mounted on air receiver for low air pressure.

One (1) Switch Systems NC float for high drywell.

One (1) Time Mark A258B power monitor for power failure

One (1) Furnas limit switch and one (1) Dayton time delay on each check valve level to signal pump failure.

Description and Schedule

Job: Contract #11 Date July 28, 1980
Name: Mark IV Construction Co.

ITEM 106

ENVIRONMENTAL CONTROL

1500 Watts Heater Fan-forced 5120 BTU
Dehumidifier 15 PT/D 200 cfm Fan 265 cfm 0.0 " S
Fan Motor 1610 RPM 1.86 AMPS 115 Volts Shaded pole Typ
Sump Pump 1000 GPH 17' TDH Submersible Type SV25A Mod
Pump Motor 8.5 Amps 115 Volts Shaded Pole Typ
Two (2) 4 1/2" dial, 0-15 psi gauges for pump suction
Two (2) 4 1/2" dial, 0-200 psi gauges for pump discharges
Each gauge will have a protective diaphragm with gauge cock.

ITEM 107

POWER FEED CONDUIT

2" EMT Type Wire to terminals in panel
by others. Also, one (1) 3/4" EMT conduit for load center power and
one (1) 3/4" EMT conduit for alarm wiring.

ITEM 108

TEST STAND OPERATION

One (1) Hr. at 490 gpm at 335' TDI
a. Hr. at gpm at TDI
b. Hr. at gpm at TDI
c. Hr. at gpm at TDI

ITEM 109

SHIPPING DETAILS

Shipped by truck to jobsite or nearest passable road.

Est. 26,000 lbs.
Shipping Weight and Date Estimate 14-18 weeks after formal approval received in shop. Subject to & contingent upon availability & procurement of materials.

Description and Schedule

Job: Contract #11 Date July 28, 1980

Name: Mark IV Construction Co.

ITEM 110

SPARE PARTS AND ACCESSORIES

Seal Two (2) Thus Mechanical

Gaskets Two (2) Thus Volute

Touch Up Kit One (1) Thus Containing epoxy

Daily Report NR Thus

Instructions Six (6) Thus One (1) in station, Five (5) sent direct.

Ash Tray NR Waste Paper Basket NR

Wet Well Trash Basket NR " x " x " Type

Rails Length Brackets

Wench Type Cable Chair

Additional Spare Parts:

Two (2) sets of bearings for pump

Two (2) pump shafts

Two (2) untrimmed impellers

Two (2) bearing housings

Two (2) shaft sleeves

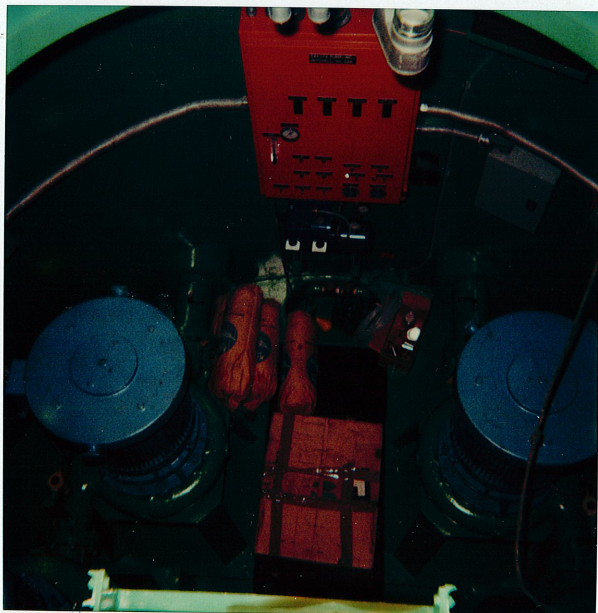
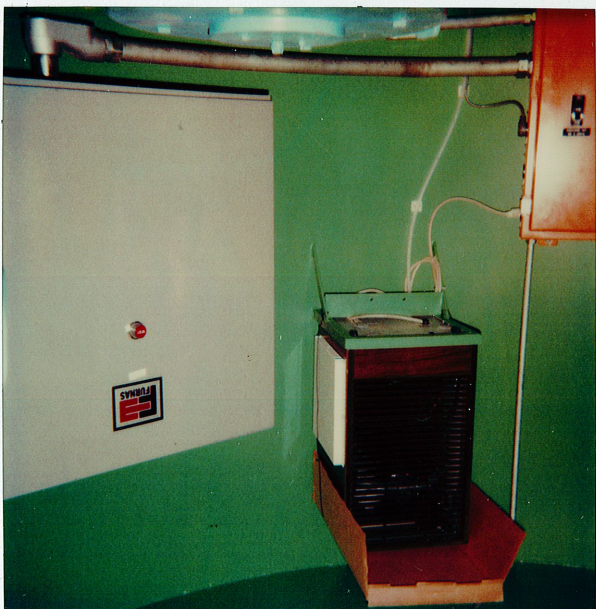
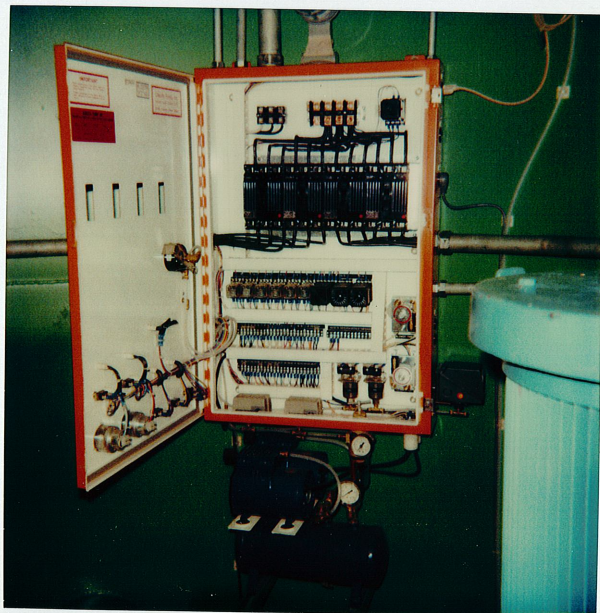
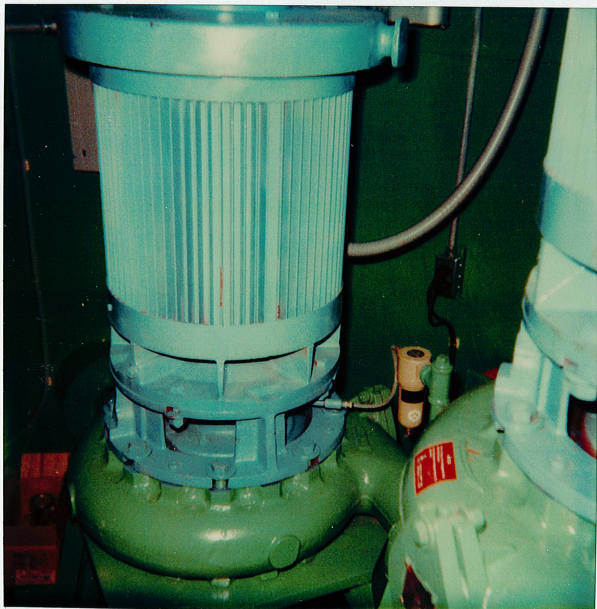
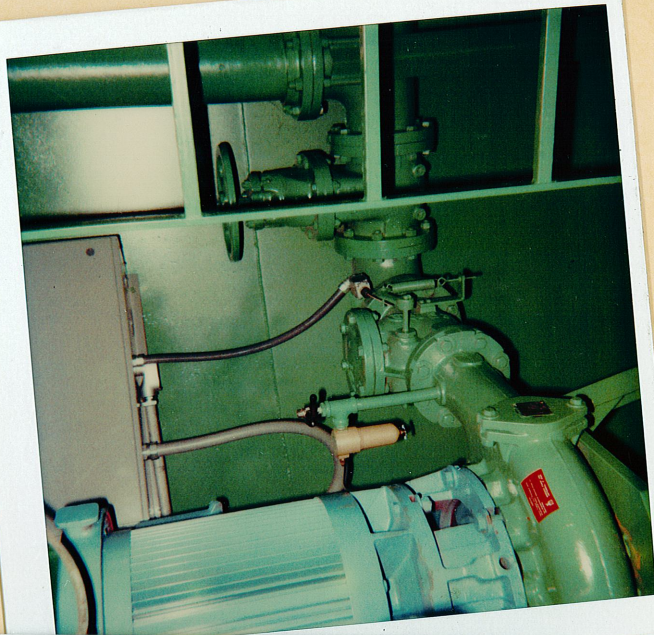
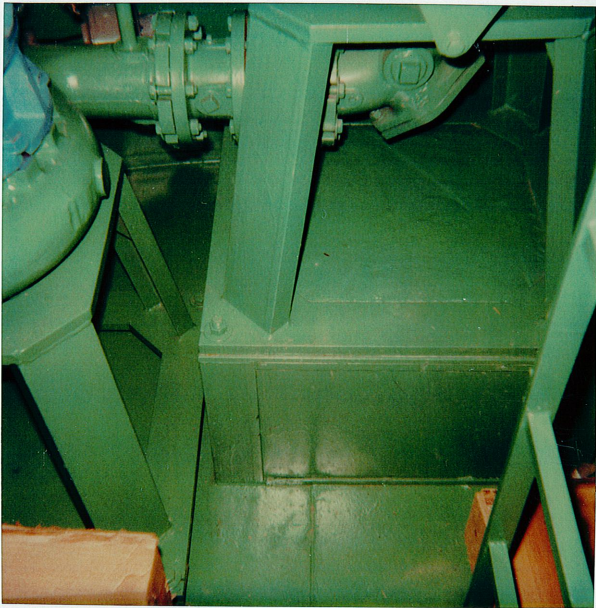
One (1) ventilating blower to be used
as spare for installed blower.

SUPPLY "NO SMOKING"
SIGN IN STATION

INSTALL 2 UNITS, WITH
ALTERNATING SWITCH

Respectfully Submitted,

by: *Verlen Lowrie*
for Dakota Pump Inc.



430
pump #1

Bob Farber City
203-4152 5048
Fax 203-4152 5038