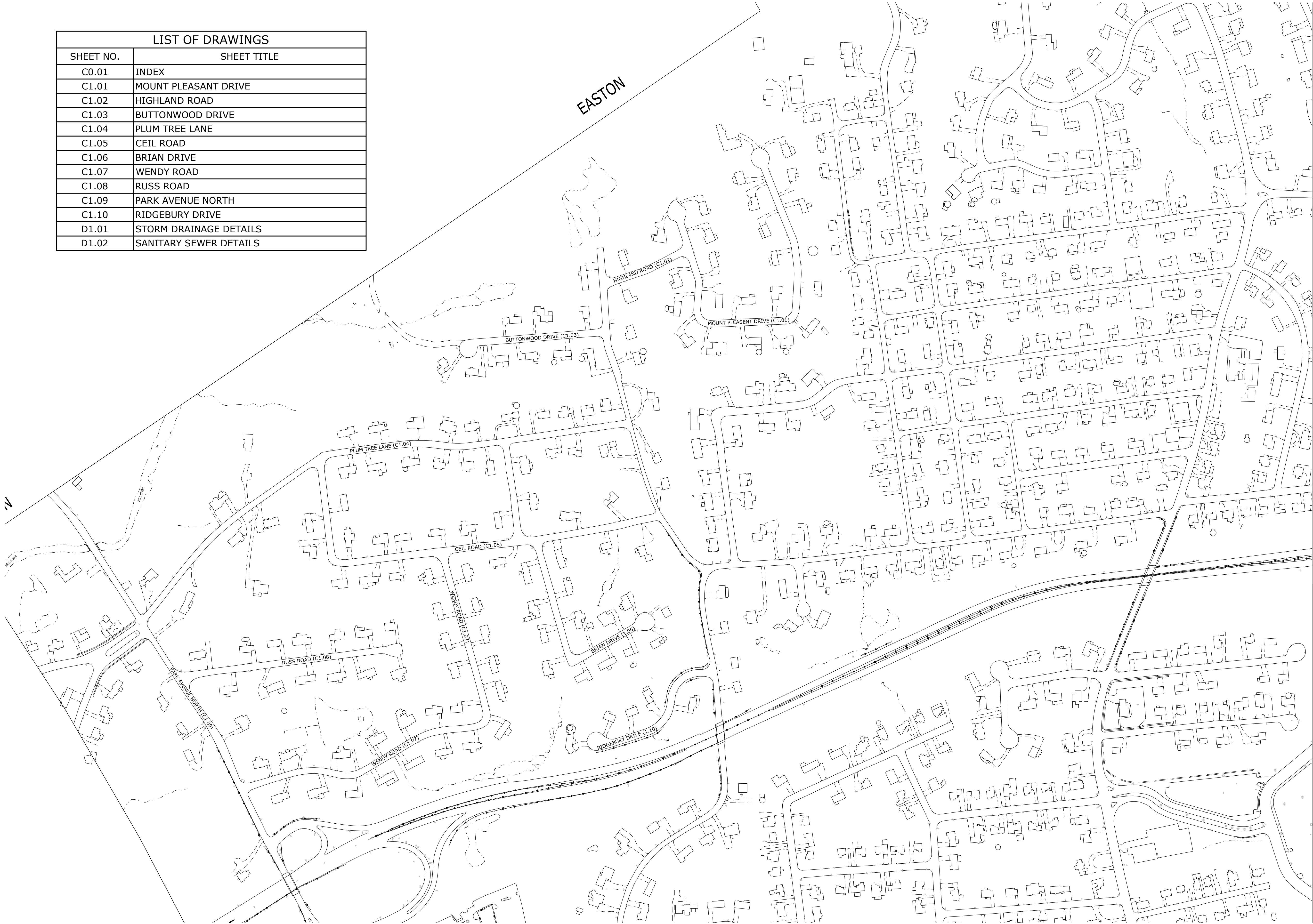


Last Saved: 3/20/2018 2:29pm By: RRCat
Project: 10196-105-Storm Drainage
Tighe & Bond P:\10196-105-Storm Drainage P2018\Drawings - Figures\AutoCAD Sheets\10196-105-C100-STRM+SAN.dwg

LIST OF DRAWINGS	
SHEET NO.	SHEET TITLE
C0.01	INDEX
C1.01	MOUNT PLEASANT DRIVE
C1.02	HIGHLAND ROAD
C1.03	BUTTONWOOD DRIVE
C1.04	PLUM TREE LANE
C1.05	CEIL ROAD
C1.06	BRIAN DRIVE
C1.07	WENDY ROAD
C1.08	RUSS ROAD
C1.09	PARK AVENUE NORTH
C1.10	RIDGEBURY DRIVE
D1.01	STORM DRAINAGE DETAILS
D1.02	SANITARY SEWER DETAILS



**Drainage
and Sanitary
Sewer
Improvements**

Town of
Trumbull

Trumbull, CT

March 15, 2018

MARK	DATE	DESCRIPTION
PROJECT NO:	T0196-105	
DATE:	3/15/2018	
FILE:	T0196-105-C100-STRM+SAN.dwg	
DRAWN BY:	BSR	
CHECKED:	AJM	
APPROVED:		

INDEX

SCALE: 1" = 200'

C0.01

**Drainage
and Sanitary
Sewer
Improvements**

Town of
Trumbull

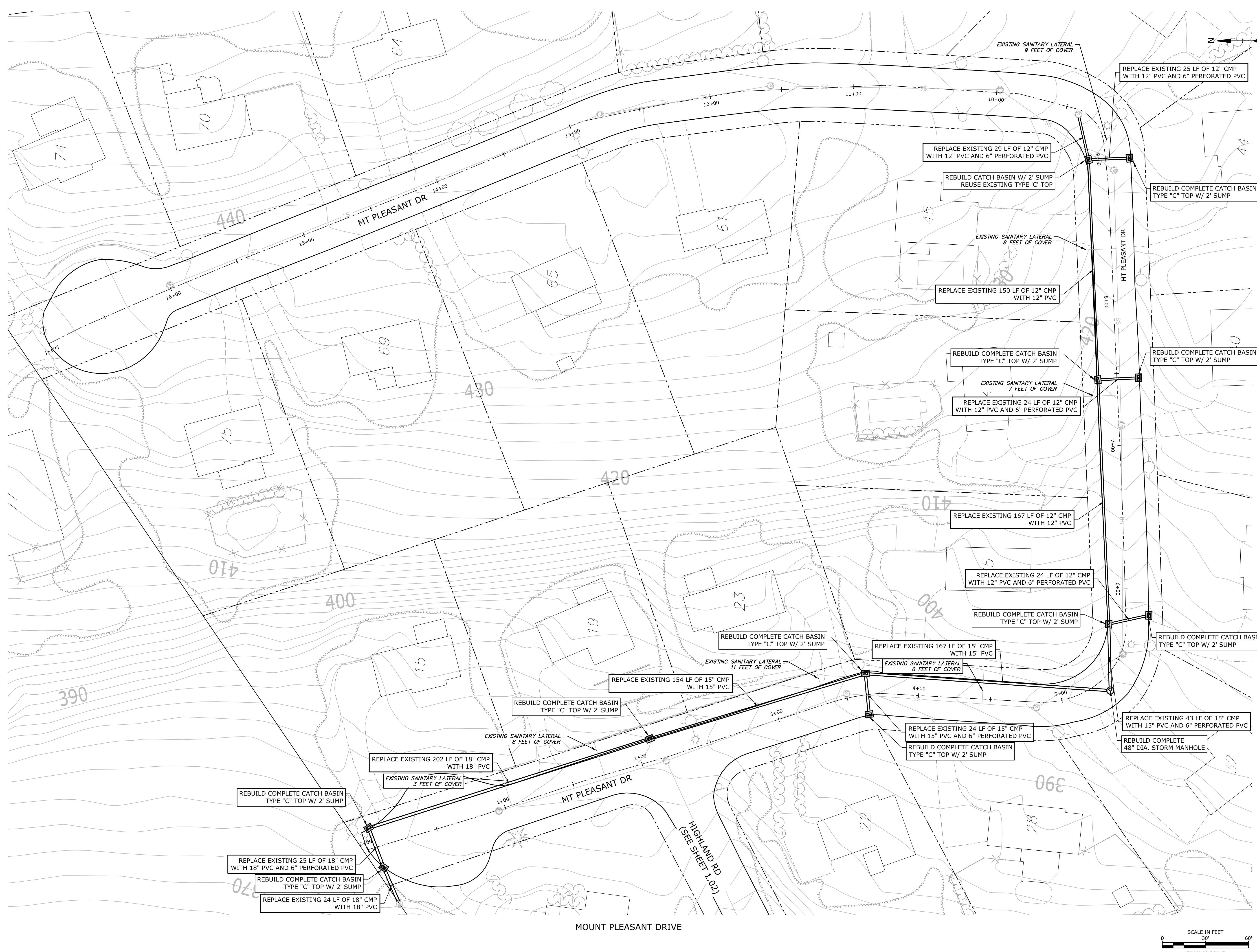
Trumbull, CT
March 15, 2018

MARK	DATE	DESCRIPTION
PROJECT NO:	T0196-105	
DATE:	3/15/2018	
FILE:	T0196-105-C100-STRM+SAN.dwg	
DRAWN BY:	BSR	
CHECKED:	AJM	
APPROVED:		

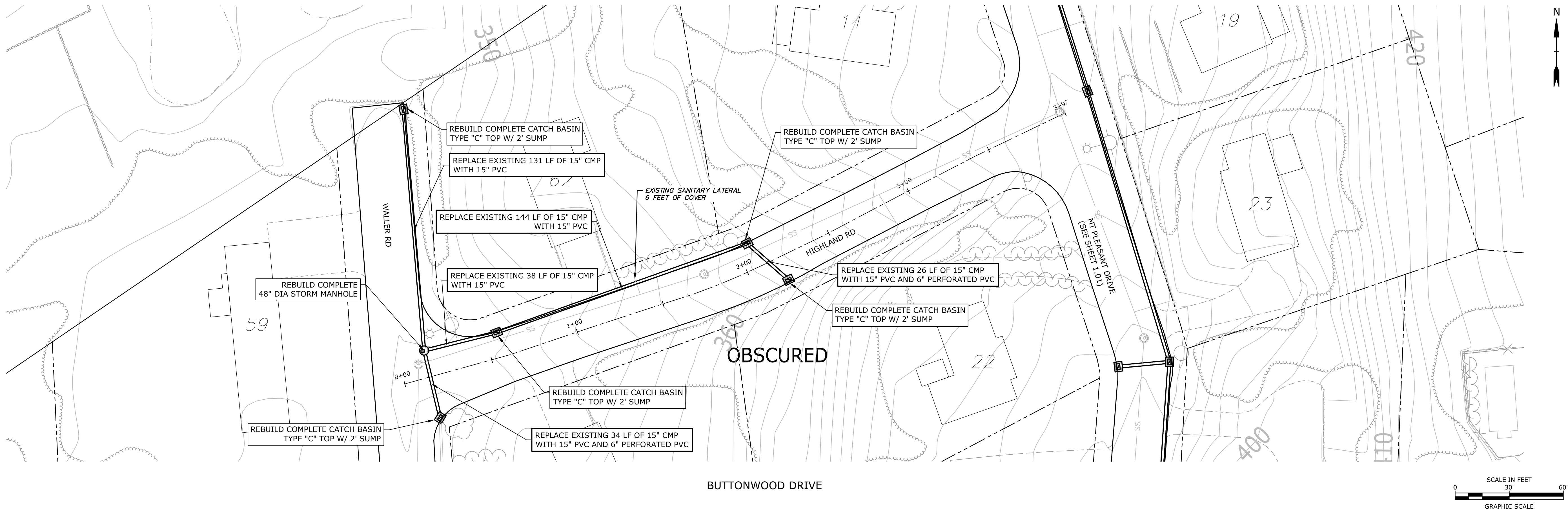
MOUNT PLEASANT DR

SCALE: 1" = 30'

C1.01



Last Saved: 3/20/2018 2:30pm By: BSR
Project: 1000 Bridgeport Avenue, Suite 320, Shelton, CT 06484
Tighe & Bond, Inc. T0196-105-STRM+SAN.dwg



Tighe&Bond
www.tighebond.com
1000 Bridgeport Avenue
Suite 320
Shelton, CT 06484
(203) 712-1100

**Drainage
and Sanitary
Sewer
Improvements**

Town of
Trumbull

Trumbull, CT

March 15, 2018

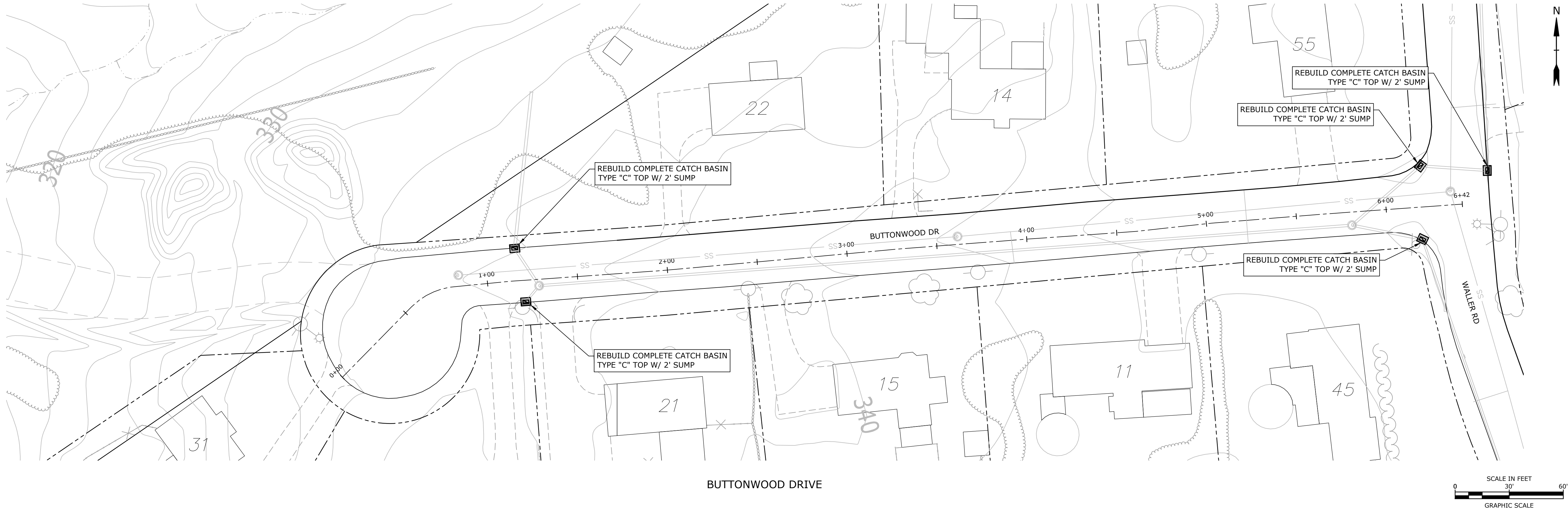
MARK	DATE	DESCRIPTION
PROJECT NO:	T0196-105	
DATE:	3/15/2018	
FILE:	T0196-105-C100-STRM+SAN.dwg	
DRAWN BY:	BSR	
CHECKED:	AJM	
APPROVED:		

HIGHLAND ROAD

SCALE: 1" = 30'

C1.02

Last Saved: 3/20/2018 2:31pm By: BRCat
Project: 1000 Bridgeport Avenue, Suite 320
Tighe & Bond 1000 Bridgeport Avenue, Suite 320
Shelton, CT 06484 (203) 712-1100
T0196-105-STRM+SAN.dwg



Tighe&Bond
www.tighebond.com
1000 Bridgeport Avenue
Suite 320
Shelton, CT 06484
(203) 712-1100

Drainage and Sanitary Sewer Improvements

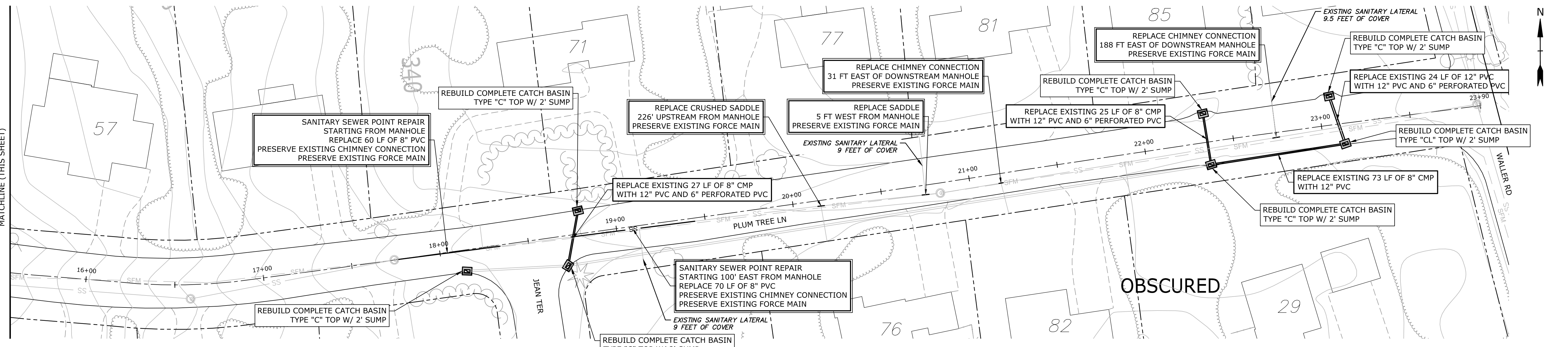
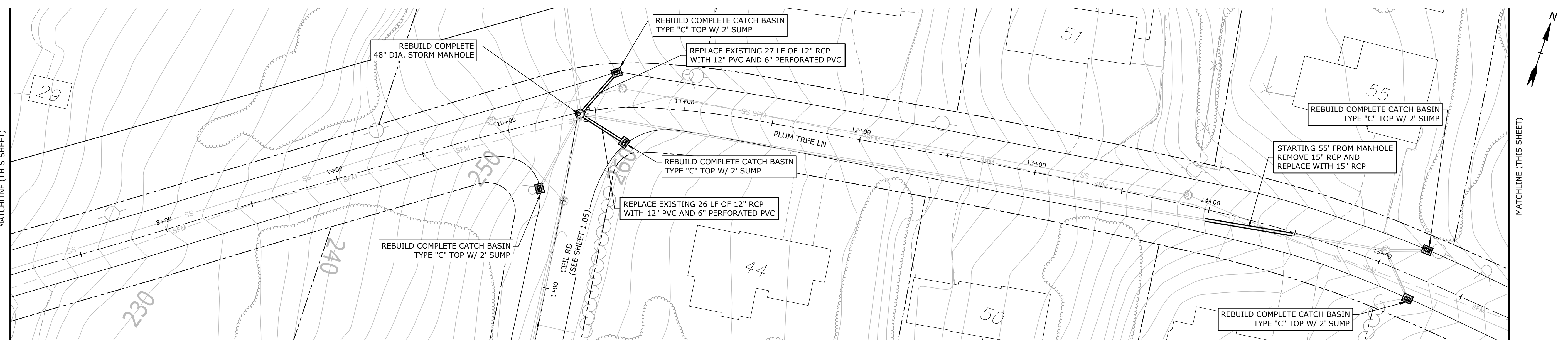
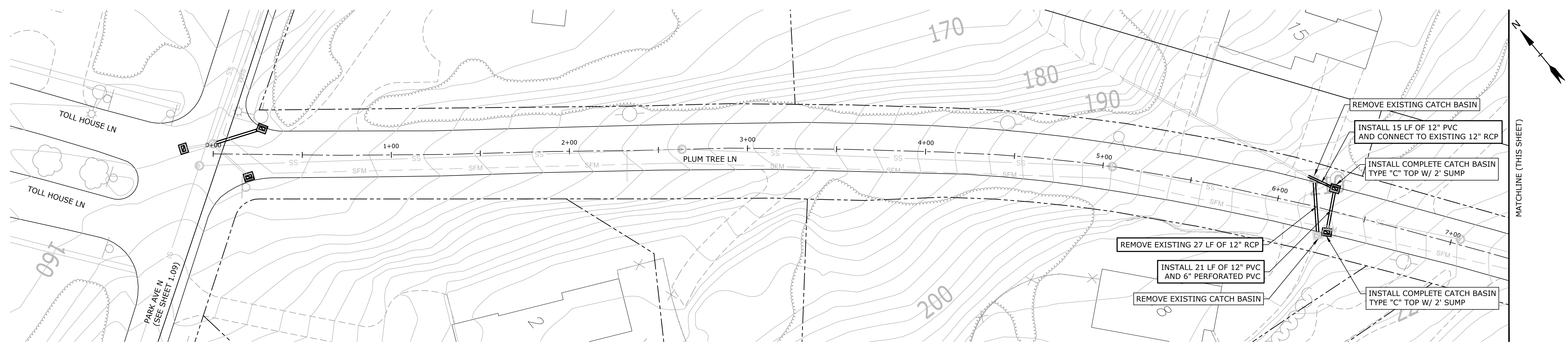
Town of
Trumbull

Trumbull, CT

March 15, 2018

-	-	-
MARK	DATE	DESCRIPTION
PROJECT NO:	T0196-105	
DATE:	3/15/2018	
FILE:	T0196-105-C100-STRM+SAN.dwg	
DRAWN BY:	BSR	
CHECKED:	AJM	
APPROVED:		

BUTTONWOOD DR	
SCALE:	1" = 30'
C1.03	



**Drainage
and Sanitary
Sewer
Improvements**

Town of
Trumbull

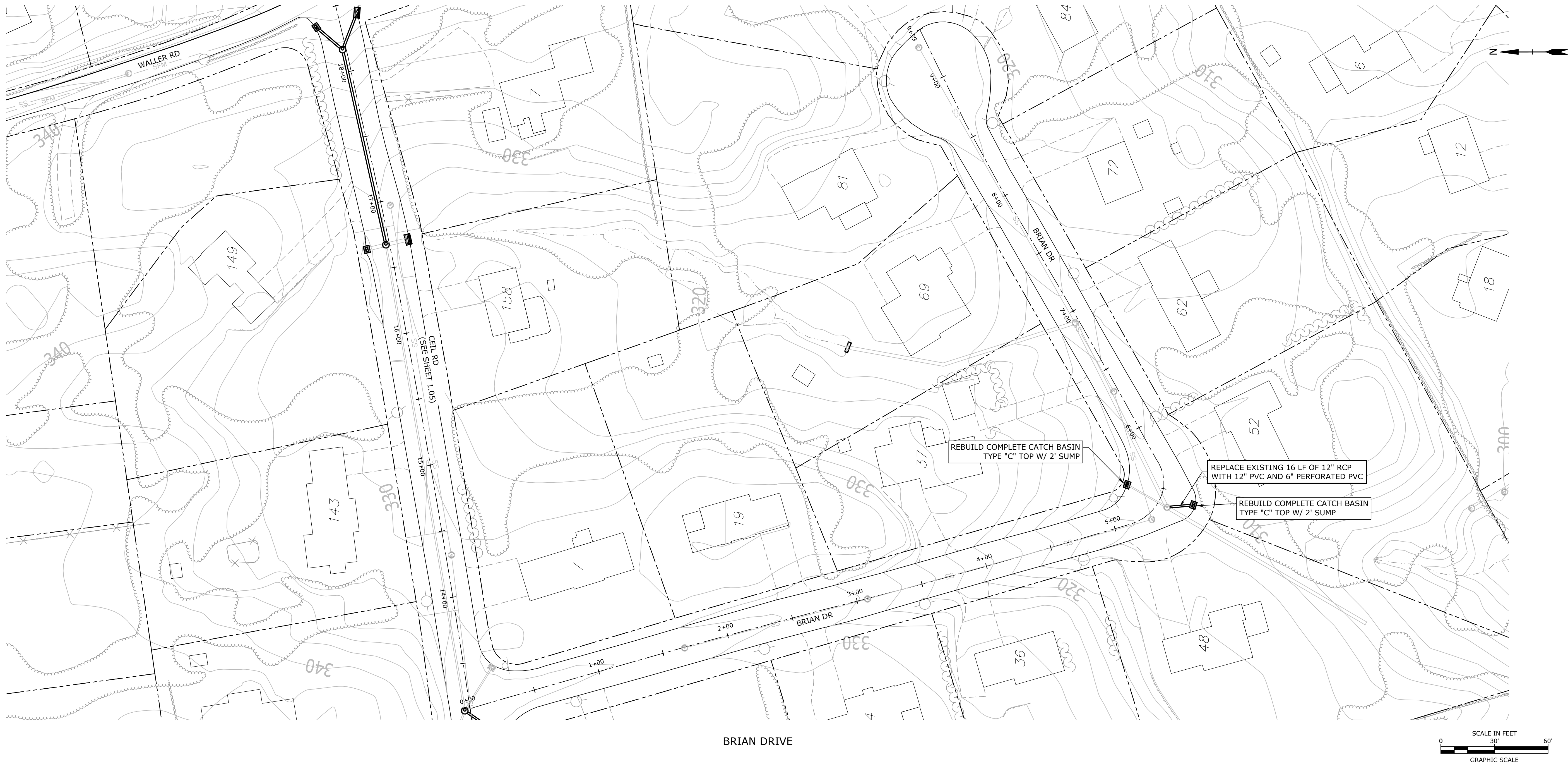
Trumbull, CT

March 15, 2018

MARK	DATE	DESCRIPTION
PROJECT NO:	T0196-105	
DATE:	3/15/2018	
FILE:	T0196-105-C100-STRM+SAN.dwg	
DRAWN BY:	BSR	
CHECKED:	AJM	
APPROVED:		

PLUM TREE LANE
SCALE: 1" = 30'
C1.04

Last Saved: 3/20/2018 2:32pm By: BRCat
Project: 1000 Bridgeport Avenue
Tighe & Bond 11110196-105-STRM+SAN.dwg



Tighe&Bond
www.tighebond.com
1000 Bridgeport Avenue
Suite 320
Shelton, CT 06484
(203) 712-1100

Drainage and Sanitary Sewer Improvements

Town of Trumbull

Trumbull, CT

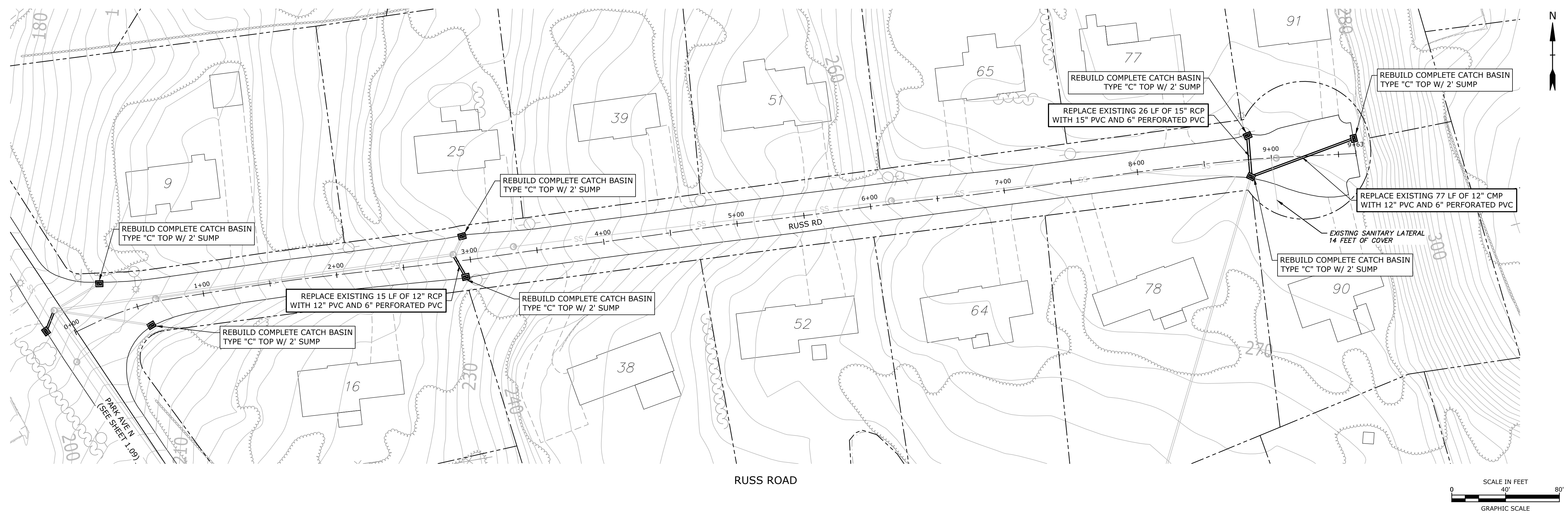
March 15, 2018

MARK	DATE	DESCRIPTION
PROJECT NO:	T0196-105	
DATE:	3/15/2018	
FILE:	T0196-105-C100-STRM+SAN.dwg	
DRAWN BY:	BSR	
CHECKED:	AJM	
APPROVED:		

BRIAN DRIVE

SCALE: 1" = 30'

C1.06



Drainage and Sanitary Sewer Improvements

Town of
Trumbull

Trumbull, CT

March 15, 2018

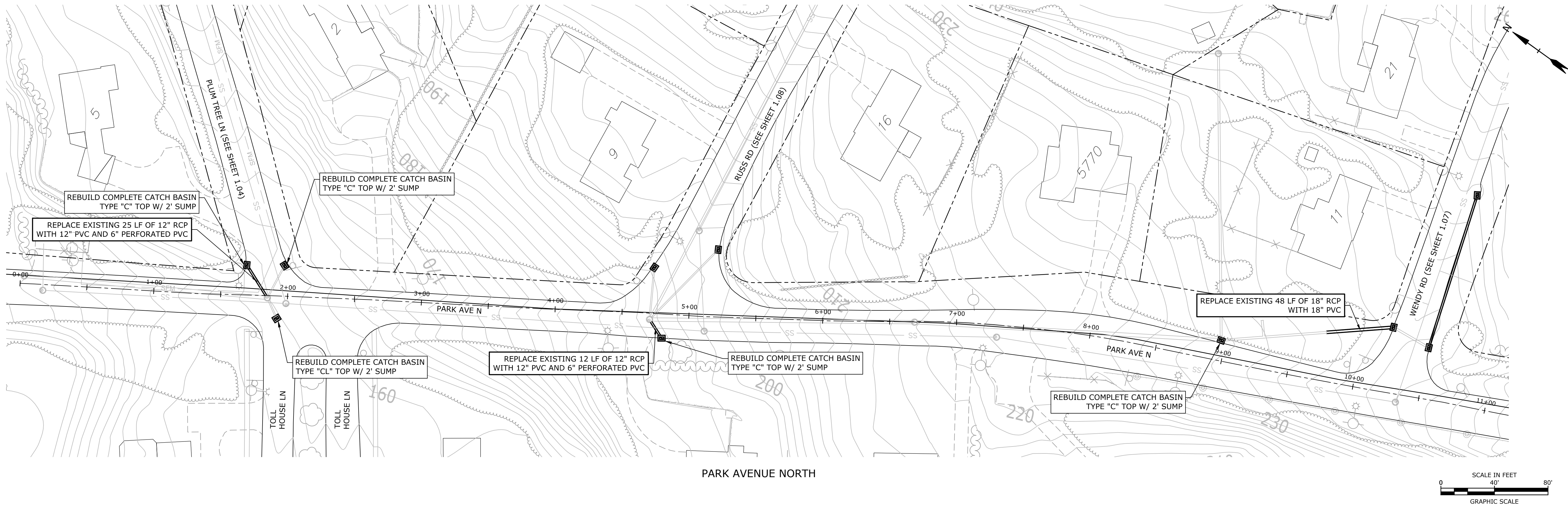
-	-	-
MARK	DATE	DESCRIPTION
PROJECT NO:	T0196-105	
DATE:	3/15/2018	
FILE:	T0196-105-C100-STRM+SAN.dwg	
DRAWN BY:	BSR	
CHECKED:	AJM	
APPROVED:		

RUSS ROAD

SCALE: 1" = 40'

C1.08

Last Saved: 3/20/2018 2:32pm By: BRCat
Project: 105 - Town of Trumbull
Tighe & Bond 1111196-105 - Town of Trumbull
Figures/AutoCAD Sheets/T0196-105-C100-STRM+SAN.dwg



Tighe&Bond
www.tighebond.com
1000 Bridgeport Avenue
Suite 320
Shelton, CT 06484
(203) 712-1100

**Drainage
and Sanitary
Sewer
Improvements**

Town of
Trumbull

Trumbull, CT

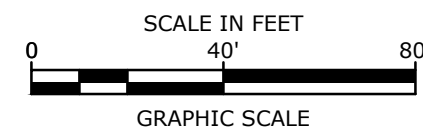
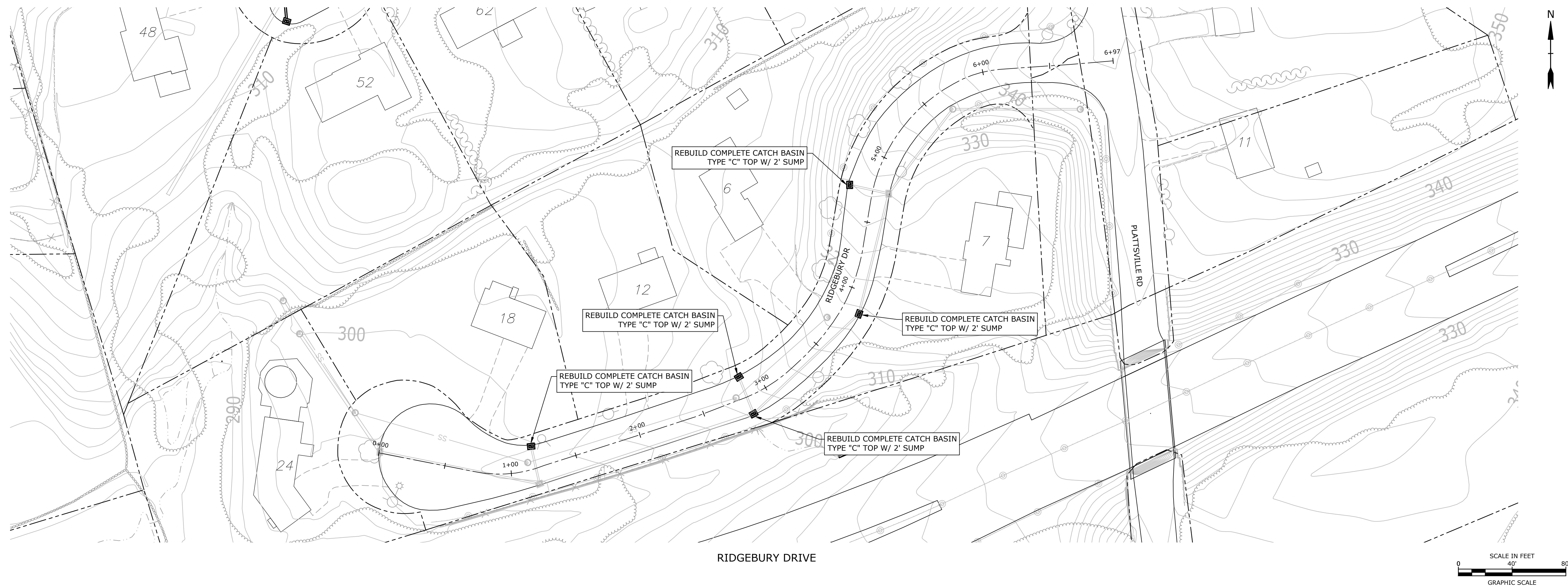
March 15, 2018

MARK	DATE	DESCRIPTION
PROJECT NO: T0196-105		
DATE: 3/15/2018		
FILE: T0196-105-C100-STRM+SAN.dwg		
DRAWN BY: BSR		
CHECKED: AJM		
APPROVED:		

PARK AVENUE NORTH

SCALE: 1" = 40'

C1.09

**Tighe&Bond**

www.tighebond.com
1000 Bridgeport Avenue
Suite 320
Shelton, CT 06484
(203) 712-1100

Drainage and Sanitary Sewer Improvements

Town of
Trumbull

Trumbull, CT

March 15, 2018

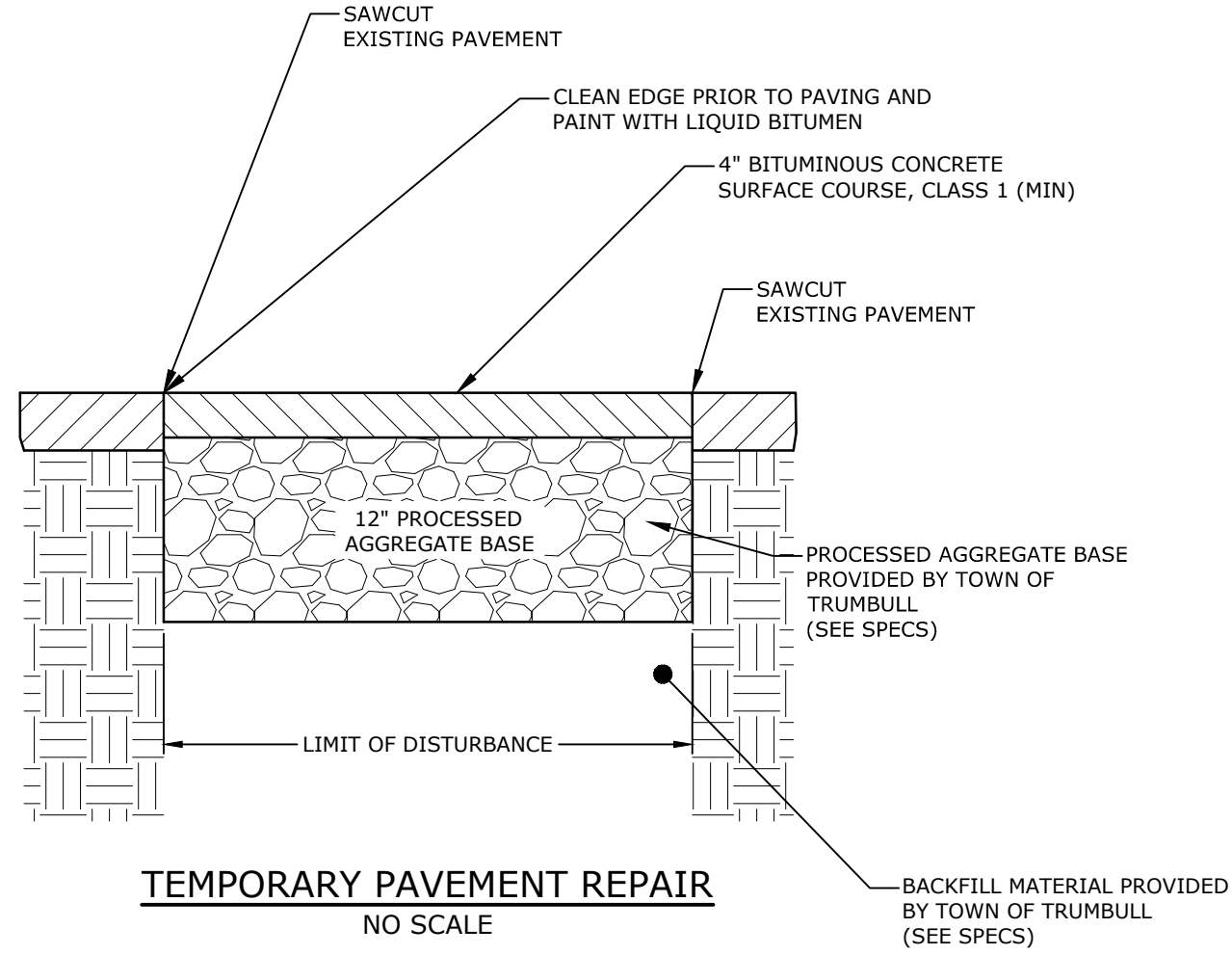
"	"	"
MARK	DATE	DESCRIPTION
PROJECT NO:	T0196-105	
DATE:	3/15/2018	
FILE:	T0196-105-C100-STRM+SAN.dwg	
DRAWN BY:	BSR	
CHECKED:	AJM	
APPROVED:		

RIDGEBURY DRIVE

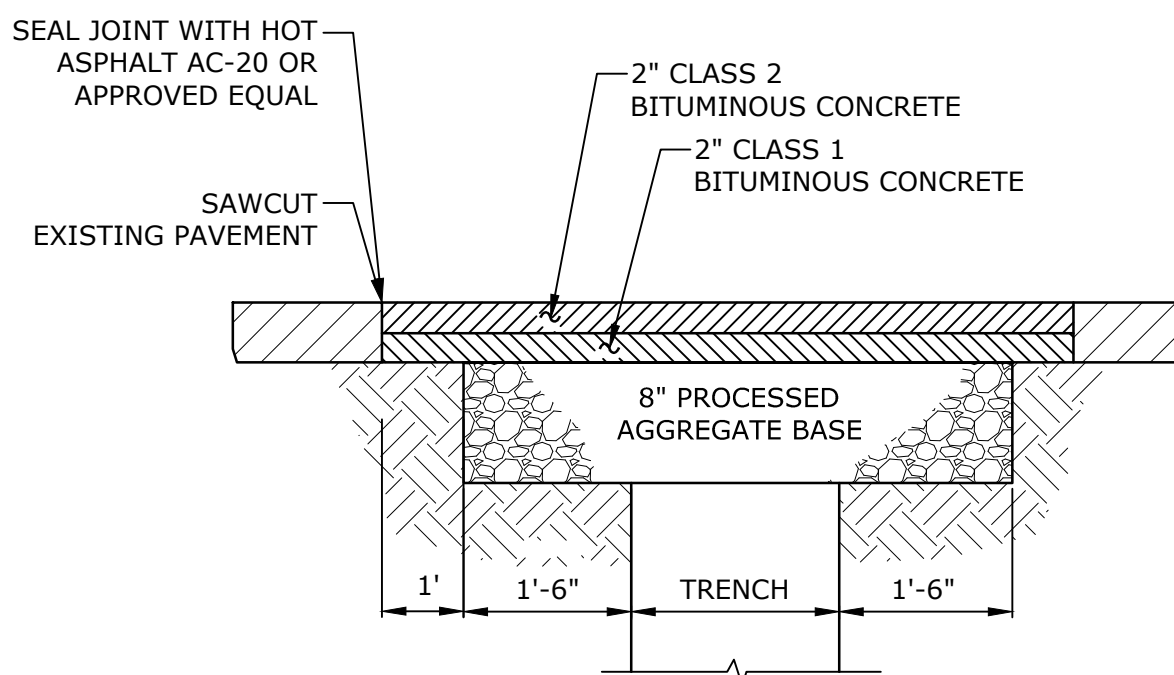
SCALE: 1" = 40'

C1.10

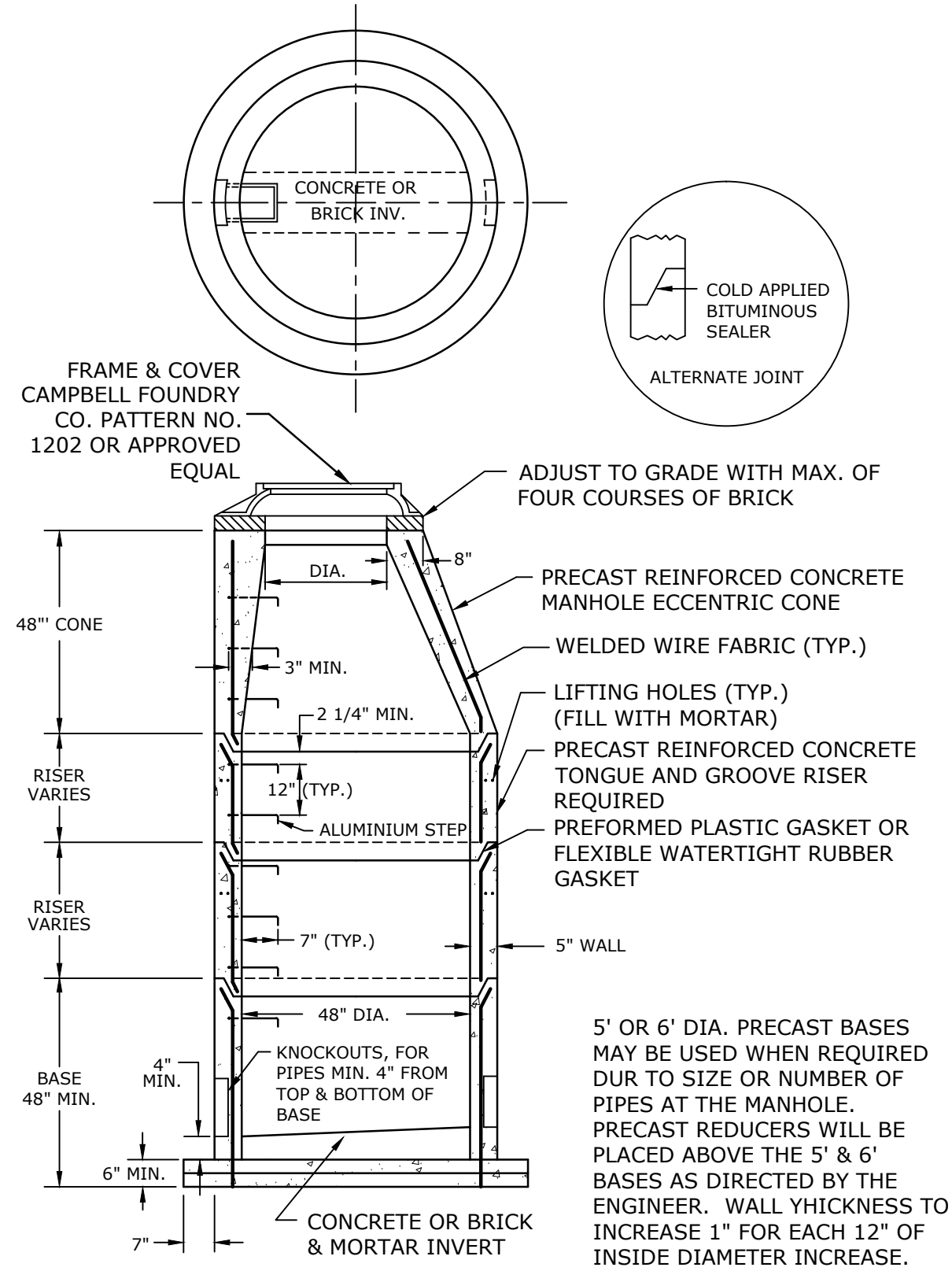
Last Saved: 3/20/2018 8:29pm By: BRCat
Project: 105-C100-STRM+SAN.dwg
Tighe & Bond 11/11/2019 10:55:10 AM
Town of Trumbull
Storm Drainage
P22018 Drawings
Figures/AutoCAD Sheets/105-C100-STRM+SAN.dwg



TEMPORARY PAVEMENT REPAIR
NO SCALE



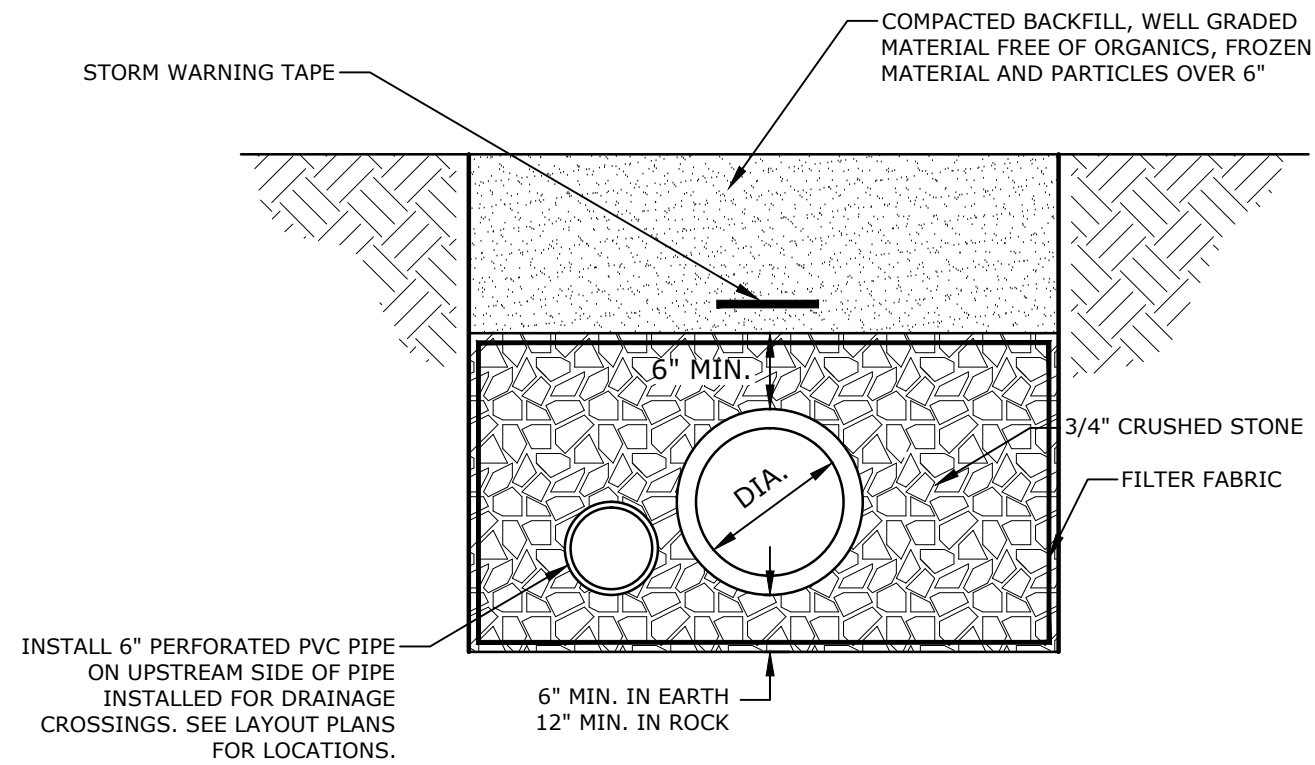
PERMANENT PAVEMENT REPAIR
NO SCALE



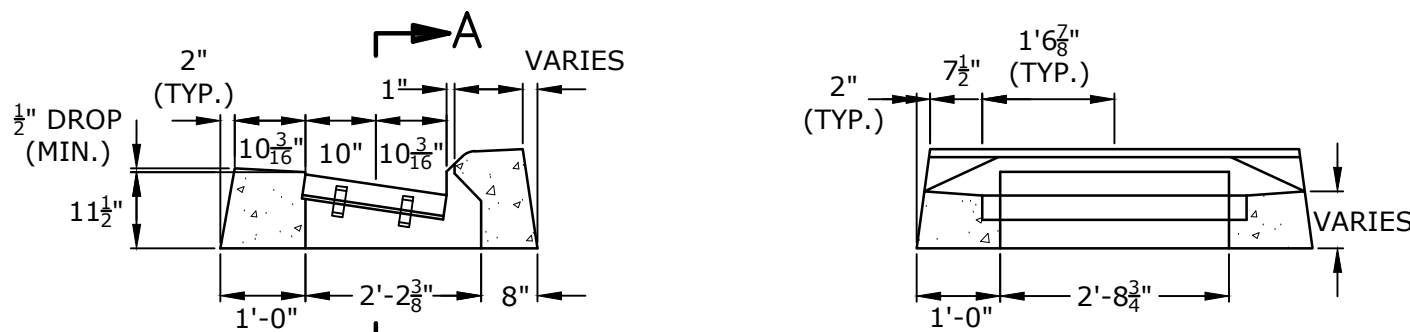
48" PRECAST MANHOLE
NO SCALE

CONSTRUCTION NOTES:

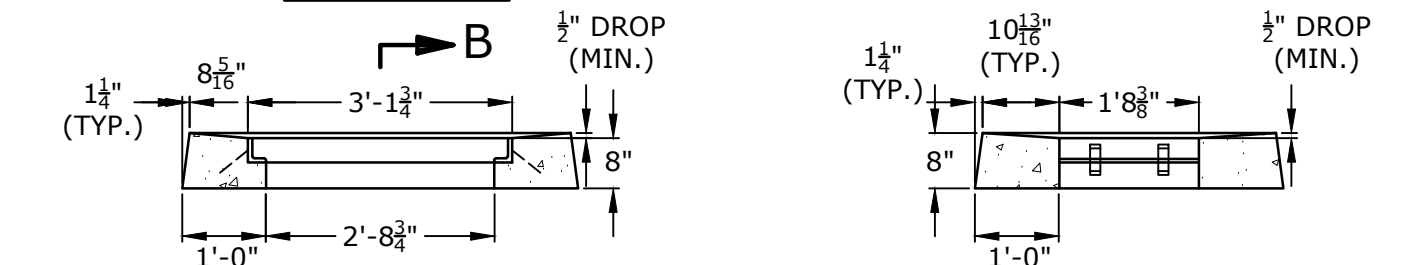
1. CONSTRUCTION SHALL BE IN CONFORMANCE WITH THE TOWN OF TRUMBULL STANDARDS & CONNDOT FORM 816.
2. THE CONTRACTOR IS RESPONSIBLE FOR THE MAINTENANCE AND PROTECTION OF TRAFFIC. PROVIDE TRAFFIC CONTROL PATTERN AND DEVICES IN ACCORDANCE WITH CONNDOT TEMPORARY TRAFFIC CONTROL PLANS.
3. ALL UNDERGROUND UTILITIES SHOULD BE CONSIDERED APPROXIMATE LOCATIONS. CONTRACTOR SHALL "CALL BEFORE YOU DIG" PRIOR TO ANY EXCAVATION.
4. RESET EXISTING SIGNS DISTURBED BY CONSTRUCTION.
5. ANY DAMAGE TO EXISTING CURB, SIDEWALK OR ANY OTHER HIGHWAY APPURTENANCES SHALL BE REPAIRED BY THE CONTRACTOR AT NO COST TO THE TOWN OF TRUMBULL.
6. PROVIDE A CONSTRUCTION SCHEDULE, PRIOR TO THE BEGINNING OF WORK, TO THE TOWN OF TRUMBULL ENGINEERING DEPARTMENT AND CONSTRUCTION OBSERVER. PROVIDE UPDATED WRITTEN SCHEDULE ON A BI-WEEKLY BASIS THROUGHOUT CONSTRUCTION.
7. INFORMATION ON EXISTING CONDITIONS WAS TAKEN FROM GIS INFORMATION PROVIDED BY THE TOWN OF TRUMBULL ENGINEERING DEPARTMENT AND THE INFORMATION ON EXISTING UTILITIES HAS BEEN COMPLIED FROM AVAILABLE INFORMATION INCLUDING UTILITY COMPANY AND RECORD MAPS AND IS NOT GUARANTEED CORRECT, ACCURATE OR COMPLETE. UTILITIES ARE SHOWN TO ALERT THE CONTRACTOR TO THEIR PRESENCE. THE CONTRACTOR AND/OR RESPONSIBLE PARTY IS SOLELY RESPONSIBLE FOR DETERMINING ACTUAL LOCATIONS AND ELEVATIONS OF ALL UTILITIES INCLUDING SERVICES. **PRIOR TO ANY CONSTRUCTION, CALL "CALL BEFORE YOU DIG" AT 1-800-922-4455 AND VERIFY ALL UNDERGROUND AND OVERHEAD UTILITY LOCATIONS.**
8. IT IS THE RESPONSIBILITY OF THE CONTRACTOR TO VERIFY ALL ELEVATIONS, PROPERTY LINES, LOCATIONS OF UTILITIES AND SITE CONDITIONS IN THE FIELD. IF AN UNFORESEEN INTERFERENCE EXISTS BETWEEN AN EXISTING AND A PROPOSED STRUCTURE, THE CONTRACTOR SHALL NOTIFY THE TOWN ENGINEER SO THAT THE APPROPRIATE REVISIONS CAN BE MADE.
9. TYPE "A" CATCH BASIN GRATES SHALL BE USED AT ALL PROPOSED CATCH BASINS.



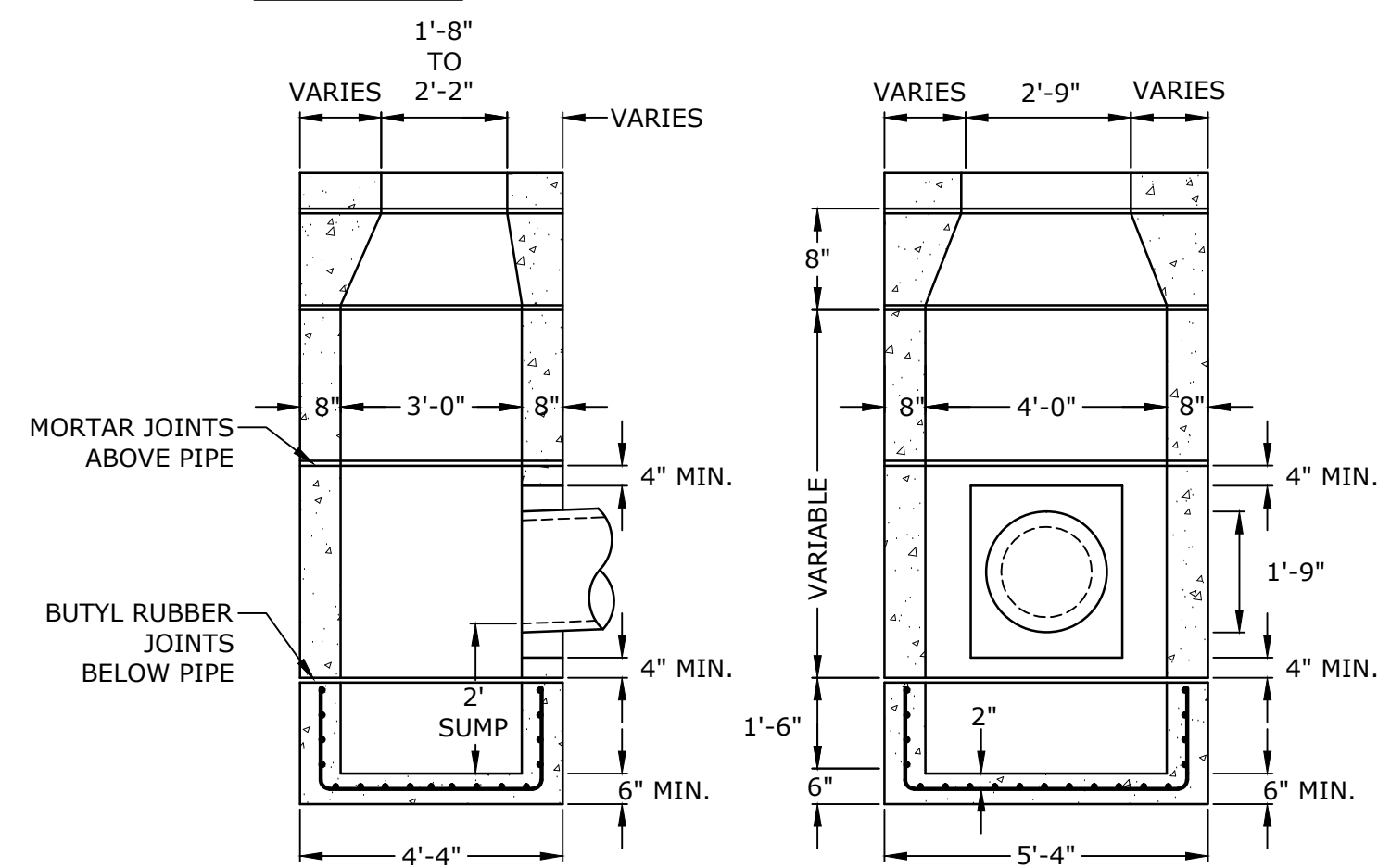
SDR-35 TRENCH BEDDING DETAIL
NO SCALE



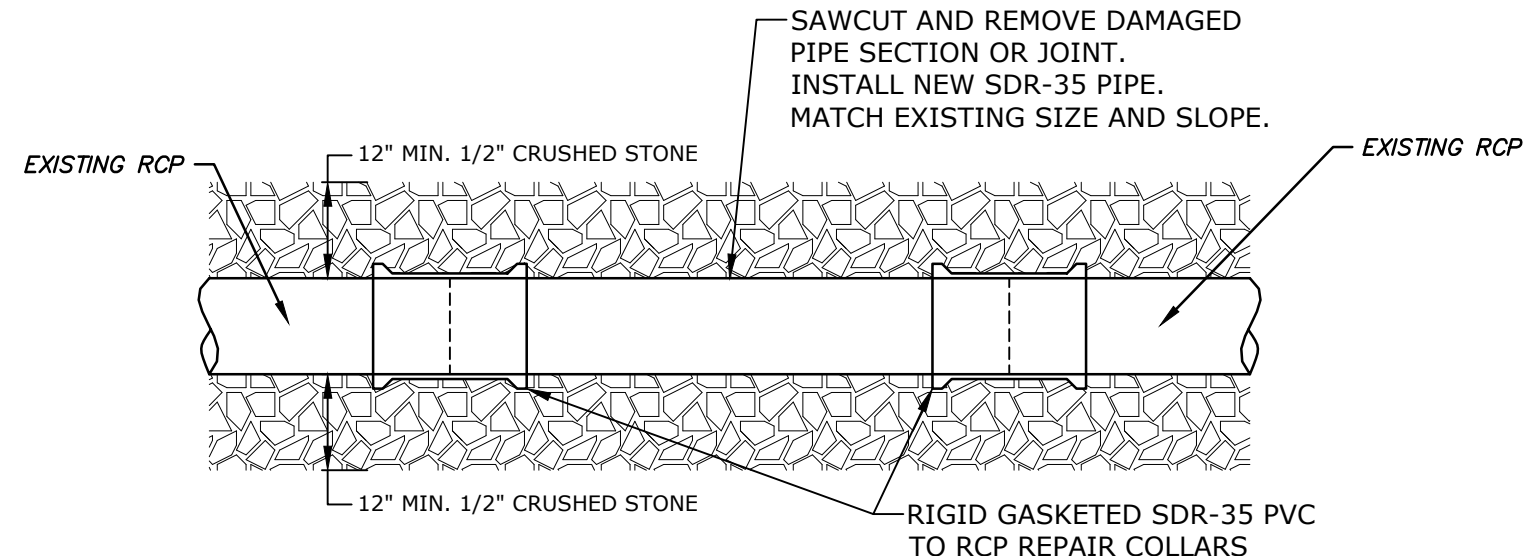
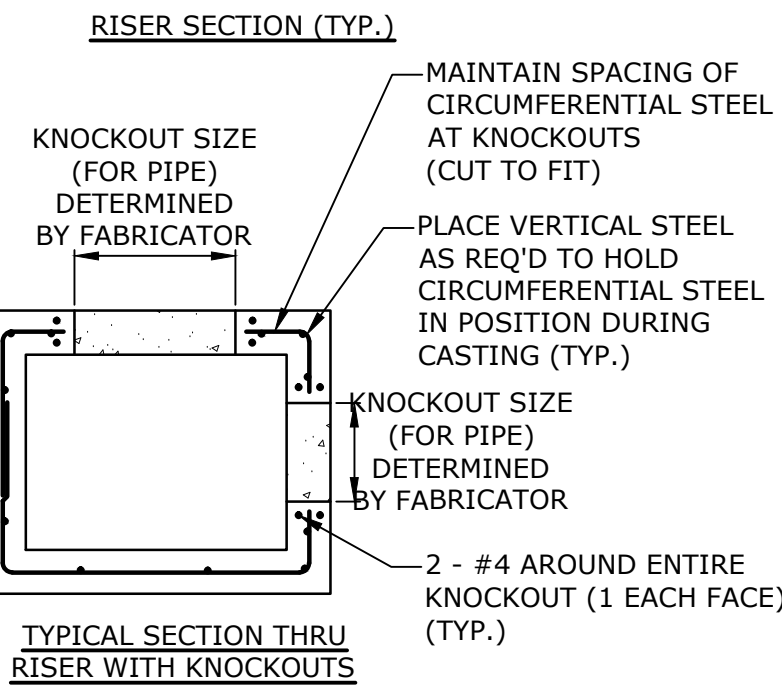
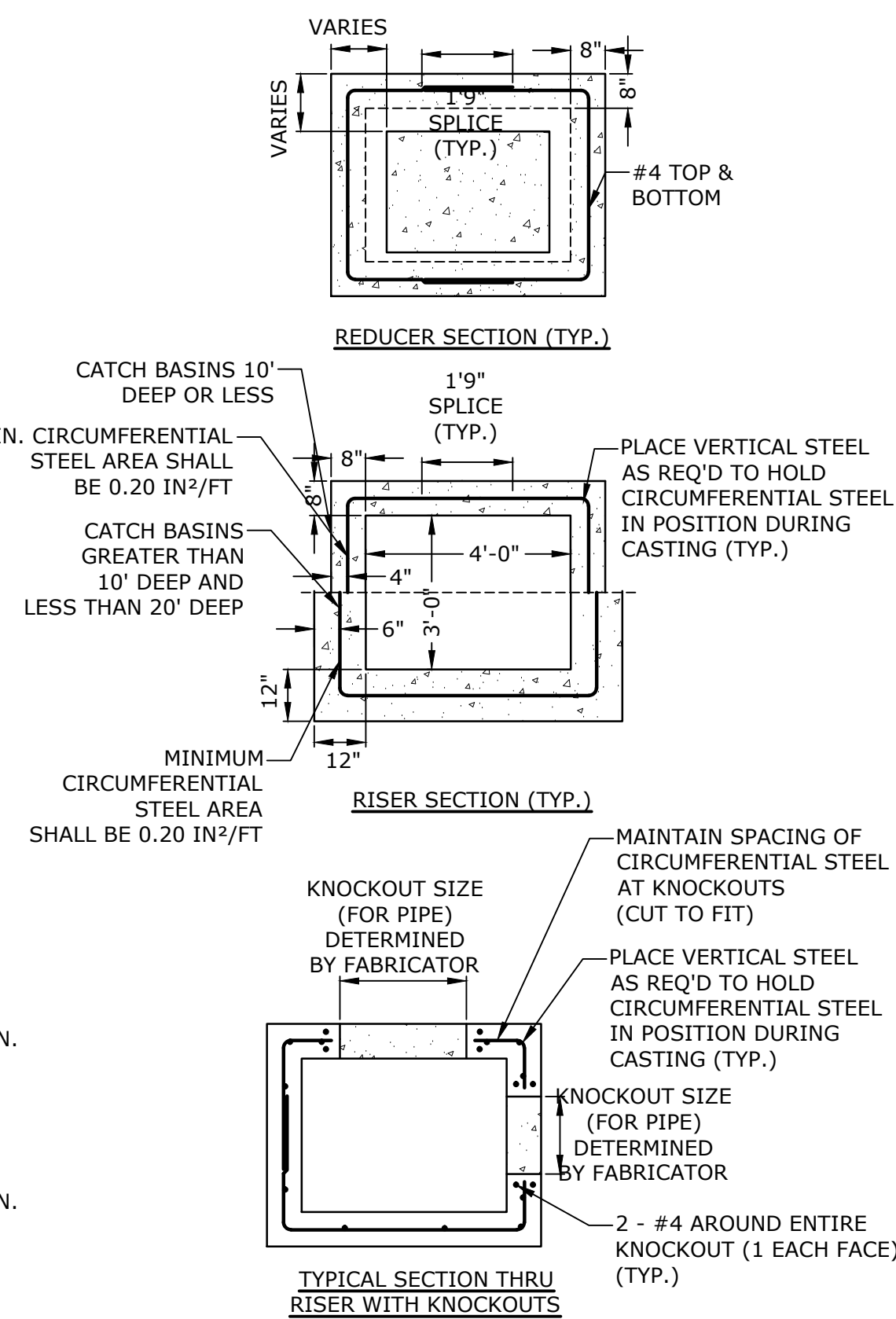
TYPE 'C' CATCH BASIN TOP
CROSS SECTION



TYPE 'CL' CATCH BASIN TOP
CROSS SECTION



TYPE 'C' & 'CL' CATCH BASIN
NO SCALE



STORM DRAINAGE POINT REPAIR
NO SCALE

Tighe & Bond

www.tighebond.com
1000 Bridgeport Avenue
Suite 320
Shelton, CT 06484
(203) 712-1100

**Drainage
and Sanitary
Sewer
Improvements**

Town of
Trumbull

Trumbull, CT

March 15, 2018

MARK	DATE	DESCRIPTION

STORM DRAINAGE DETAILS

SCALE: AS NOTED

D1.01

