

Trumbull Housing Authority  
REQUEST FOR PROPOSALS  
Stern Village Window Replacement

RFP 6339 Due: April 11, 2019 @ 2:00PM

## **Addendum # 2 dated 3-28-19**

All technical inquiries regarding this request shall be answered up to the close of business on April 4, 2019 after which time no additional questions will be accepted. No interpretation of the meaning of the plans, specifications or other pre-bid documents will be made to any bidder orally. Every request for such interpretation must be in writing and addressed to George Wiles, AIA, Wiles + Architects, LLC., 155 Brooklawn Avenue, Bridgeport, CT 06604; Fax: (203) 384-1751, or email at: [george@wilesarch.com](mailto:george@wilesarch.com) and, to be given consideration, must be received no later than April 4, 2019 By close of business. All other questions may be directed to Kevin J. Bova Purchasing Agent (203.452.5042) [kbova@trumbull-ct.gov](mailto:kbova@trumbull-ct.gov)

## ADDENDUM

### 1. Clarification

- a. Aluminum windows will not be considered as a substitution.
- b. All proposed substitutions shall be in accordance with the requirements of Section 0125000 SUBSTITUTION PROCEDURES of the specifications.
- c. It is strongly recommended that proposed substitution be made in accordance with section 0125000 SUBSTITUTION PROCEDURES and be reviewed prior to Bid Opening.

### 2. Clarification

- a. All windows shall be single hung, except Alternate Comm Bldg.
- b. Egress window requirements do not apply due to the fact all Living Units have two exterior doors.

### 3. Clarification

- a. Time of completion shall be on or before 190 days.
- b. Liquidated Damages shall be \$1,500.00 per day.

### 4. Add

- a. Furnish and install complete Cordless Vinyl Blinds to all windows
- b. Add: Section 122113 – CHORDLESS VINYL BLINDS

### 5. Add

- a. Community Building window drawings included in this Addendum.
- b. Add Drawings:
  - i. **CB\_A101 Comm. Center Floor Plan**
  - ii. **CB\_A201 Community Bldg Exterior Elevations**
  - iii. **CB\_A501 Schedules & Details**

### 6. Sheet List

- a. **Delete:** drawings, CB D101 and CB D102.
- b. **Clarification:** rename drawings CB A101 & CB A201, by deleting words “Base Bid”.

### 7. Attachments: CB\_A101 Comm. Center Floor Plan

**CB\_A201 Community Bldg Exterior Elevations**

**CB\_A501 Schedules & Details**

**Section 122113 – CHORDLESS VINYL BLINDS pages 122113-1 thru 122113-3 inclusive**

**End Addendum**

## SECTION 122113 – CORDLESS VINYL BLINDS

### PART 1 - GENERAL

#### 1.1 SUMMARY

A. Section Includes:

1. Provide Cordless Horizontal Vinyl Blinds for all windows.

#### 1.2 ACTION SUBMITTALS

- A. Product Data: For each type of product.
- B. Shop Drawings: Show fabrication and installation details for Cordless Vinyl Blinds.
- C. Samples: For each exposed product and for each color and texture specified.

#### 1.3 INFORMATIONAL SUBMITTALS

- A. Product certificates.

#### 1.4 CLOSEOUT SUBMITTALS

- A. Maintenance data.

#### 1.5 QUALITY ASSURANCE

- A. Mockups: Build mockups to verify selections made under Sample submittals and to demonstrate aesthetic effects and set quality standards for fabrication and installation.
1. Approval of mockups does not constitute approval of deviations from the Contract Documents contained in mockups unless Architect specifically approves such deviations in writing.
  2. Subject to compliance with requirements, approved mockups may become part of the completed Work if undisturbed at time of Substantial Completion.

### PART 2 - PRODUCTS

#### 2.1 CORDLESS VINYL BLINDS

- A. Basis-of-Design Product: Subject to compliance with requirements, provide or comparable product by one of the following:

1. Hampton Bay Model #10793478184248
2. Hunter Douglas Contract.
3. Springs Window Fashions.

B. Polymer Slats: Lead free, UV stabilized.

1. Width: 1" Room Darkening vinyl slats
2. Decorative Head Rail.
3. Flame-Resistance Rating: Comply with NFPA 701; testing by a qualified

C. Headrail:

D. Mounting Brackets: With spacers and shims required for blind placement.

E. Hold-Down Brackets and Hooks or Pins: Manufacturer's standard.

F. Colors, Textures, Patterns, and Gloss:

1. Slats: As selected by Owner from manufacturer's full range

## 2.2 CORDLESS VINYL BLINDS VINYL FABRICATION

A. Unit Sizes: Fabricate units in sizes to fill window and other openings as follows, measured at 74 deg F (23 deg C):

1. Between (Inside) Jamb Installation: Width equal to jamb-to-jamb dimension of opening in which blind is installed less 1/4 inch (6 mm) per side or 1/2 inch (13 mm) total, plus or minus 1/8 inch (3.1 mm). Length equal to head-to-sill dimension of opening in which blind is installed less 1/4 inch (6 mm), plus or minus 1/8 inch (3.1 mm).
2. Outside of Jamb Installation: Width and length as indicated, with terminations between blinds of end-to-end installations at centerlines of mullion or other defined vertical separations between openings.

## PART 3 - EXECUTION

### 3.1 INSTALLATION

A. Examine substrates, areas, and conditions, with Installer present, for compliance with requirements for installation tolerances, operational clearances, and other conditions affecting performance.

1. Proceed with installation only after unsatisfactory conditions have been corrected.

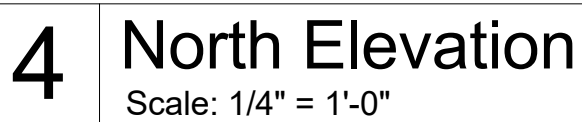
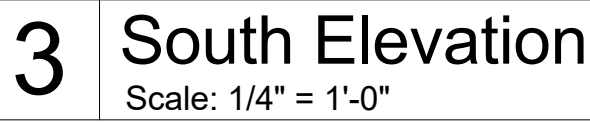
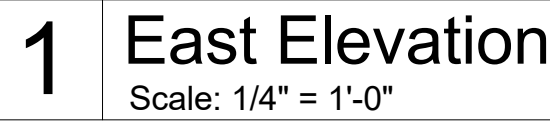
B. Install Cordless Vinyl Blinds level and plumb, aligned and centered on openings, and aligned with adjacent units according to manufacturer's written instructions.

1. Locate so exterior slat edges are not closer than **1 inch (25 mm)** from interior faces of glass and not closer than **1/2 inch (13 mm)** from interior faces of glazing frames through full operating ranges of blinds.
  2. Install mounting and intermediate brackets to prevent deflection of headrails.
  3. Install with clearances that prevent interference with adjacent blinds, adjacent construction, and operating hardware of glazed openings, other window treatments, and similar building components and furnishings.
- C. Adjust Cordless Vinyl Blinds to operate free of binding or malfunction through full operating ranges.
- D. Clean Cordless Vinyl Blinds surfaces after installation according to manufacturer's written instructions.

END OF SECTION 122113







Scale  $1/4" = 1'-0"$

