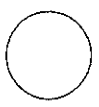


M-151

P.C. _____
 P.M. _____
 D.P. _____
 J.C. _____
 ISSUE: EMBLEMATIC 25. 2009.
 DRAWN: JACOBSON
 SCALE: 1/8" = 1'-0"
ROOF PLAN
AREA A
HVAC



JACOBSON ARCHITECTURE
 2250 W. 15th Street
 Miami, FL 33135
 305.371.1515
 www.jacobsonarch.com

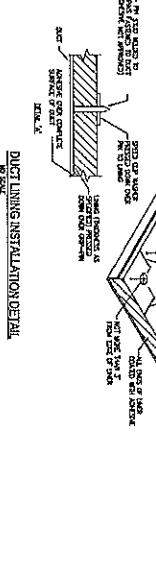
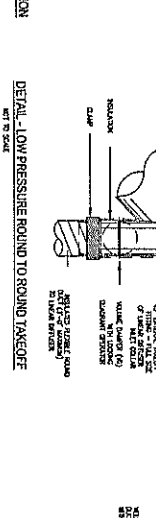
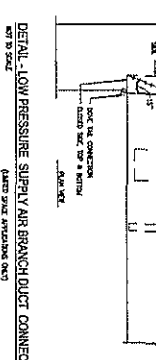
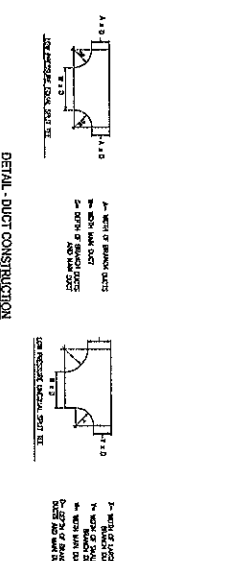
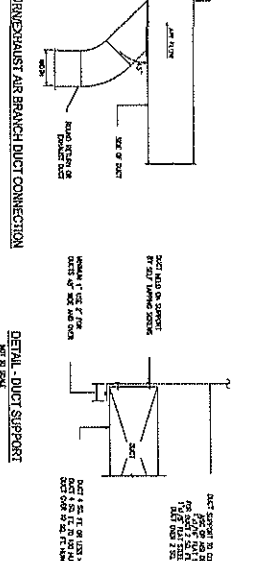
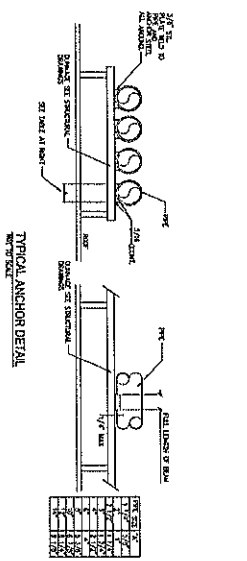
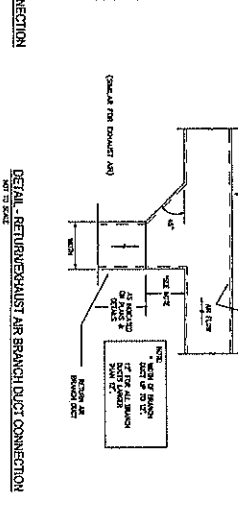
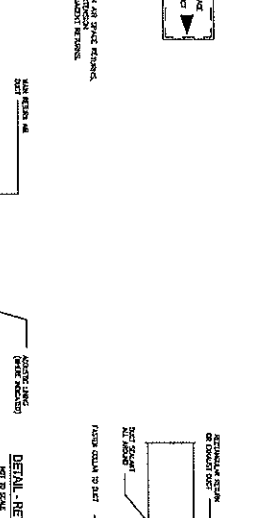
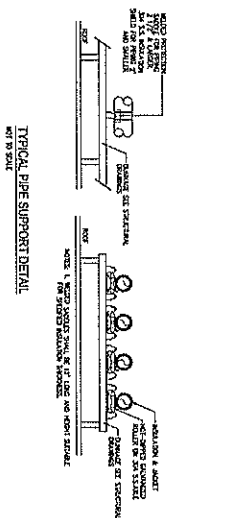
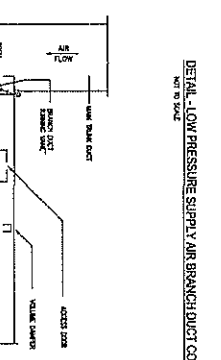
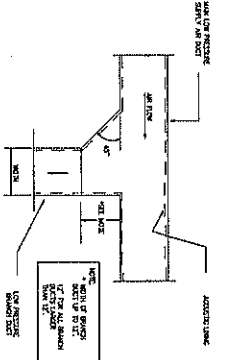
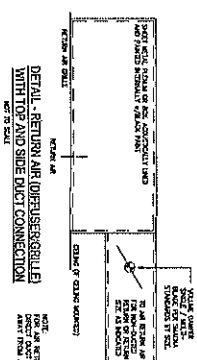
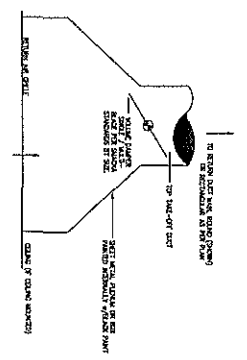
TRUMBULL HIGH SCHOOL
 7750 Trumbull Road
 Trumbull, Connecticut
 06460



**ADDITIONS AND
 RENOVATIONS FOR
 TRUMBULL
 HIGH
 SCHOOL
 PHASE 1A**

TRUMBULL HIGH SCHOOL
 7750 Trumbull Road
 Trumbull, Connecticut 06460
 305.371.1515
 www.jacobsonarch.com

CONSULTANTS:
 CIVIL ENGINEER: JACOBSON ARCHITECTURE, P.C.
 ELECTRICAL ENGINEER: JACOBSON ARCHITECTURE, P.C.
 MECHANICAL ENGINEER: JACOBSON ARCHITECTURE, P.C.
 ARCHITECT: JACOBSON ARCHITECTURE, P.C.
 STRUCTURAL ENGINEER: JACOBSON ARCHITECTURE, P.C.
 ENVIRONMENTAL ENGINEER: JACOBSON ARCHITECTURE, P.C.
 LANDSCAPE ARCHITECT: JACOBSON ARCHITECTURE, P.C.
 HISTORIC PRESERVATION ARCHITECT: JACOBSON ARCHITECTURE, P.C.
 INTERIOR ARCHITECT: JACOBSON ARCHITECTURE, P.C.
 PLANNING AND PROGRAMMING: JACOBSON ARCHITECTURE, P.C.
 TRUMBULL HIGH SCHOOL
 7750 Trumbull Road
 Trumbull, Connecticut 06460
 305.371.1515
 www.jacobsonarch.com



TRUMBULL HIGH SCHOOL
PHASE 1A
ADDITIONS AND REPAIRS FOR



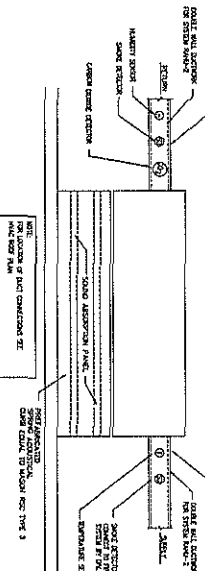
JCA ARCHITECTURE

ASSOCIATE ARCHITECT
 MICHAEL TEGBANSKY
 77 Sprague Street
 Trumbull, Connecticut 06460
 Phone: 203.261.1118

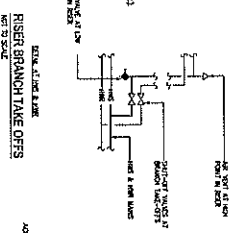
DETAILS
 HVAC

M-504

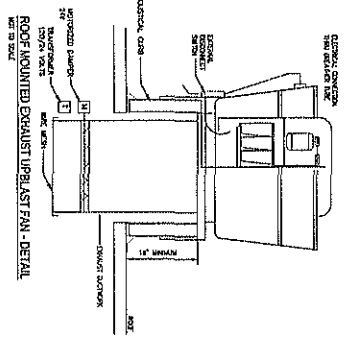
1. CHECK MANUFACTURER'S SPECIFICATIONS FOR THE CONDENSER UNIT. THE CONDENSER UNIT MUST BE INSTALLED ON A FLAT ROOF WITH A MINIMUM SLOPE OF 1/8" PER FOOT TO DRAIN TO A GROUND DRAINAGE SYSTEM. THE CONDENSER UNIT MUST BE PROTECTED FROM WIND DAMAGE BY A WIND PROTECTIVE DEVICE.
2. THE CONDENSER UNIT MUST BE INSTALLED ON A FLAT ROOF WITH A MINIMUM SLOPE OF 1/8" PER FOOT TO DRAIN TO A GROUND DRAINAGE SYSTEM. THE CONDENSER UNIT MUST BE PROTECTED FROM WIND DAMAGE BY A WIND PROTECTIVE DEVICE.
3. THE CONDENSER UNIT MUST BE INSTALLED ON A FLAT ROOF WITH A MINIMUM SLOPE OF 1/8" PER FOOT TO DRAIN TO A GROUND DRAINAGE SYSTEM. THE CONDENSER UNIT MUST BE PROTECTED FROM WIND DAMAGE BY A WIND PROTECTIVE DEVICE.
4. THE CONDENSER UNIT MUST BE INSTALLED ON A FLAT ROOF WITH A MINIMUM SLOPE OF 1/8" PER FOOT TO DRAIN TO A GROUND DRAINAGE SYSTEM. THE CONDENSER UNIT MUST BE PROTECTED FROM WIND DAMAGE BY A WIND PROTECTIVE DEVICE.
5. THE CONDENSER UNIT MUST BE INSTALLED ON A FLAT ROOF WITH A MINIMUM SLOPE OF 1/8" PER FOOT TO DRAIN TO A GROUND DRAINAGE SYSTEM. THE CONDENSER UNIT MUST BE PROTECTED FROM WIND DAMAGE BY A WIND PROTECTIVE DEVICE.
6. THE CONDENSER UNIT MUST BE INSTALLED ON A FLAT ROOF WITH A MINIMUM SLOPE OF 1/8" PER FOOT TO DRAIN TO A GROUND DRAINAGE SYSTEM. THE CONDENSER UNIT MUST BE PROTECTED FROM WIND DAMAGE BY A WIND PROTECTIVE DEVICE.



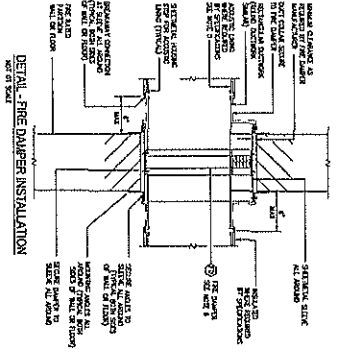
7. TYPICAL ROOFTOP AIR HANDLING UNIT - DETAIL
NOT TO SCALE



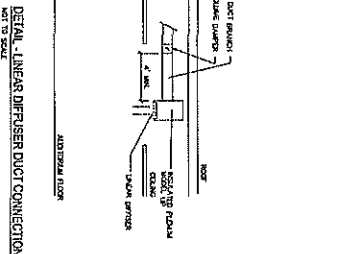
8. RISER BRANCH TAKE OFFS
NOT TO SCALE



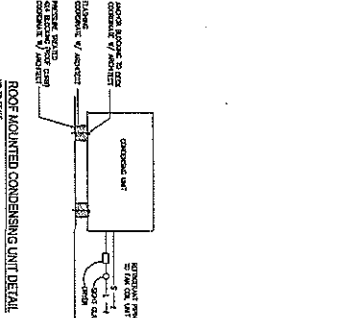
9. ROOFTOP MOUNTED EXHAUST UPBLAST FAN - DETAIL
NOT TO SCALE



10. DETAIL - FINE DRAPER INSTALLATION
NOT TO SCALE



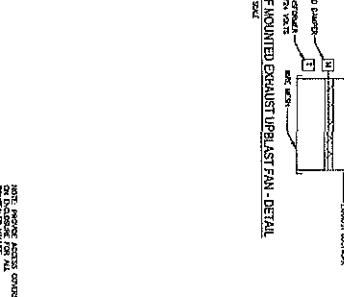
11. DETAIL - LINEAR DIFFUSER DUCT CONNECTION
NOT TO SCALE



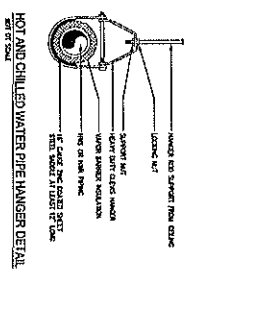
12. ROOFTOP MOUNTED CONDENSING UNIT DETAIL
NOT TO SCALE



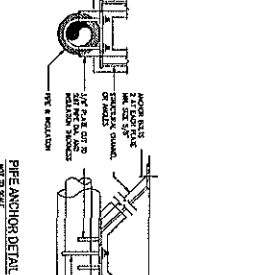
13. AIR VENT DETAIL
NOT TO SCALE



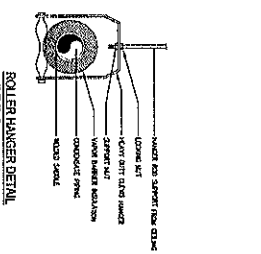
14. FLOOR MOUNTED FINNED TUBE RADIATION DETAIL
NOT TO SCALE



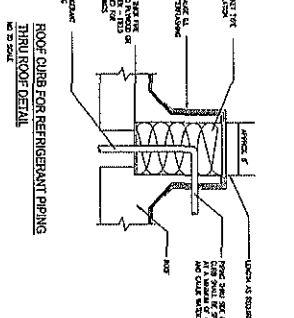
15. HOT AND CHILLED WATER PIPE HANGER DETAIL
NOT TO SCALE



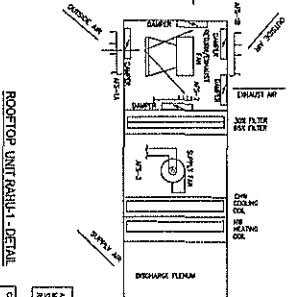
16. PIPE ANCHOR DETAIL
NOT TO SCALE



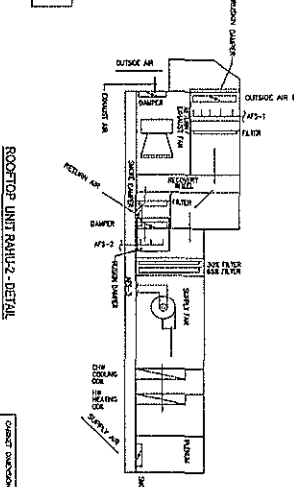
17. SOLAR HANGER DETAIL
NOT TO SCALE



18. ROOF CURB FOR REFRIGERANT PIPING THRU ROOF DETAIL
NOT TO SCALE



19. ROOFTOP UNIT RAU-1 - DETAIL
NOT TO SCALE



20. ROOFTOP UNIT RAU-2 - DETAIL
NOT TO SCALE

NO.	REVISION	DATE
1	ISSUED FOR BIDDING	10/15/2013

ADDITIONS AND REPAIRS FOR TRUMBULL HIGH SCHOOL
PHASE 1A

ROOFTOP AIR HANDLING UNIT SCHEDULE

UNIT #	MANUFACTURER AND MODEL	ROOFTOP AIR HANDLING UNIT SCHEDULE											
		TYPE	SIZE	TYPE	SIZE	TYPE	SIZE	TYPE	SIZE	TYPE	SIZE	TYPE	SIZE
100-1000-1	ROOFTOP AIR HANDLING UNIT	100-1000-1	100-1000-1	100-1000-1	100-1000-1	100-1000-1	100-1000-1	100-1000-1	100-1000-1	100-1000-1	100-1000-1	100-1000-1	100-1000-1

EXHAUST & SUPPLY FAN SCHEDULE

UNIT #	MANUFACTURER AND MODEL	EXHAUST & SUPPLY FAN SCHEDULE											
		TYPE	SIZE	TYPE	SIZE	TYPE	SIZE	TYPE	SIZE	TYPE	SIZE	TYPE	SIZE
100-1000-1	EXHAUST FAN	100-1000-1	100-1000-1	100-1000-1	100-1000-1	100-1000-1	100-1000-1	100-1000-1	100-1000-1	100-1000-1	100-1000-1	100-1000-1	100-1000-1

ENERGY RECOVERY WHEEL DATA

UNIT #	MANUFACTURER AND MODEL	ENERGY RECOVERY WHEEL DATA											
		TYPE	SIZE	TYPE	SIZE	TYPE	SIZE	TYPE	SIZE	TYPE	SIZE	TYPE	SIZE
100-1000-1	ENERGY RECOVERY WHEEL	100-1000-1	100-1000-1	100-1000-1	100-1000-1	100-1000-1	100-1000-1	100-1000-1	100-1000-1	100-1000-1	100-1000-1	100-1000-1	100-1000-1

AIR CONDITIONING UNIT SCHEDULE

UNIT #	MANUFACTURER AND MODEL	AIR CONDITIONING UNIT SCHEDULE											
		TYPE	SIZE	TYPE	SIZE	TYPE	SIZE	TYPE	SIZE	TYPE	SIZE	TYPE	SIZE
100-1000-1	AIR CONDITIONING UNIT	100-1000-1	100-1000-1	100-1000-1	100-1000-1	100-1000-1	100-1000-1	100-1000-1	100-1000-1	100-1000-1	100-1000-1	100-1000-1	100-1000-1

FAN COIL UNIT SCHEDULE

UNIT #	MANUFACTURER AND MODEL	FAN COIL UNIT SCHEDULE											
		TYPE	SIZE	TYPE	SIZE	TYPE	SIZE	TYPE	SIZE	TYPE	SIZE	TYPE	SIZE
100-1000-1	FAN COIL UNIT	100-1000-1	100-1000-1	100-1000-1	100-1000-1	100-1000-1	100-1000-1	100-1000-1	100-1000-1	100-1000-1	100-1000-1	100-1000-1	100-1000-1

CONDENSING UNIT SCHEDULE

UNIT #	MANUFACTURER AND MODEL	CONDENSING UNIT SCHEDULE											
		TYPE	SIZE	TYPE	SIZE	TYPE	SIZE	TYPE	SIZE	TYPE	SIZE	TYPE	SIZE
100-1000-1	CONDENSING UNIT	100-1000-1	100-1000-1	100-1000-1	100-1000-1	100-1000-1	100-1000-1	100-1000-1	100-1000-1	100-1000-1	100-1000-1	100-1000-1	100-1000-1

CONDENSATE REMOVAL PUMPS SCHEDULE

UNIT #	MANUFACTURER AND MODEL	CONDENSATE REMOVAL PUMPS SCHEDULE											
		TYPE	SIZE	TYPE	SIZE	TYPE	SIZE	TYPE	SIZE	TYPE	SIZE	TYPE	SIZE
100-1000-1	CONDENSATE REMOVAL PUMP	100-1000-1	100-1000-1	100-1000-1	100-1000-1	100-1000-1	100-1000-1	100-1000-1	100-1000-1	100-1000-1	100-1000-1	100-1000-1	100-1000-1

NOTES

1. PROVIDE CONDENSATE PUMP...
 2. PROVIDE CONDENSATE PUMP...
 3. PROVIDE CONDENSATE PUMP...
 4. PROVIDE CONDENSATE PUMP...
 5. PROVIDE CONDENSATE PUMP...

DEFUSER, GRILLE, AND REGISTER SCHEDULE

UNIT #	MANUFACTURER AND MODEL	DEFUSER, GRILLE, AND REGISTER SCHEDULE											
		TYPE	SIZE	TYPE	SIZE	TYPE	SIZE	TYPE	SIZE	TYPE	SIZE	TYPE	SIZE
100-1000-1	DEFUSER	100-1000-1	100-1000-1	100-1000-1	100-1000-1	100-1000-1	100-1000-1	100-1000-1	100-1000-1	100-1000-1	100-1000-1	100-1000-1	100-1000-1

SILENCERS SCHEDULE

UNIT #	MANUFACTURER AND MODEL	SILENCERS SCHEDULE											
		TYPE	SIZE	TYPE	SIZE	TYPE	SIZE	TYPE	SIZE	TYPE	SIZE	TYPE	SIZE
100-1000-1	SILENCER	100-1000-1	100-1000-1	100-1000-1	100-1000-1	100-1000-1	100-1000-1	100-1000-1	100-1000-1	100-1000-1	100-1000-1	100-1000-1	100-1000-1

SOUND DATA FOR MAIN HVAC EQUIPMENT

UNIT #	MANUFACTURER AND MODEL	SOUND DATA FOR MAIN HVAC EQUIPMENT											
		TYPE	SIZE	TYPE	SIZE	TYPE	SIZE	TYPE	SIZE	TYPE	SIZE	TYPE	SIZE
100-1000-1	MAIN HVAC EQUIPMENT	100-1000-1	100-1000-1	100-1000-1	100-1000-1	100-1000-1	100-1000-1	100-1000-1	100-1000-1	100-1000-1	100-1000-1	100-1000-1	100-1000-1

ADDITIONS AND REVISIONS FOR TRUMBULL HIGH SCHOOL
 PHASE 1A

72 Standard and
 Thermal Expansion
 See Schedule for MATERIALS

JCARHITECTURE
 ARCHITECTS
 1000 N. WILSON ST.
 CHICAGO, IL 60610
 TEL: 312.467.1000
 FAX: 312.467.1001
 WWW.JCARHITECTURE.COM

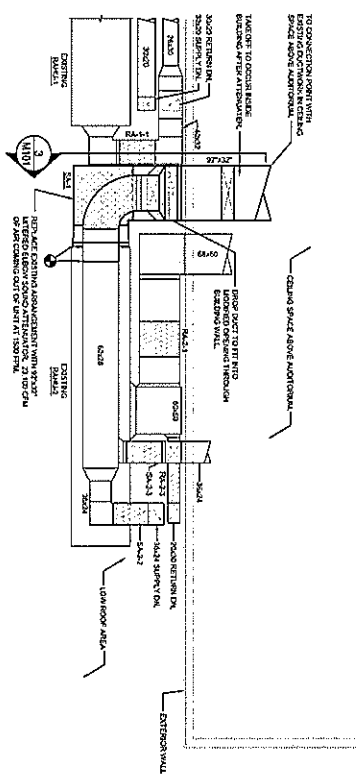
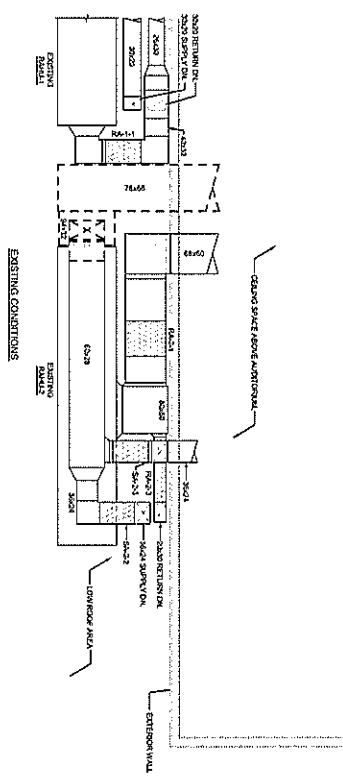
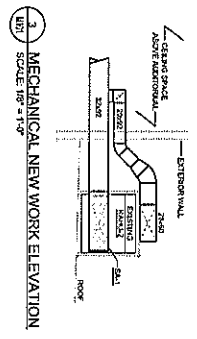
Wiles
 WILES & ASSOCIATES
 MECHANICAL ENGINEERS
 1000 N. WILSON ST.
 CHICAGO, IL 60610
 TEL: 312.467.1000
 FAX: 312.467.1001
 WWW.WILES-AND-ASSOCIATES.COM

MECHANICAL ENGINEER
 PROJECT NO. 100-1000
 1/10/2007 10:17:23 - TRANSAL 115 This AutoForm-Data File Path: \\p01\p01\100-1000-115.dwg

DUCT SOUND ATTENUATOR SCHEDULE

TAC	MR	MODEL	SERVICE	TYPE	MAX. ORIGINAL SIZE (IN W/D)	MAX. ORIGINAL SIZE (IN H)	MAX. ORIGINAL SIZE (IN L)	ORIG. SILENCE PROFILES (dB)	RESISTION LOSS (dB)	SPACES				
SA-1	VISION-ADJUSTIVE	MS-24111F	SERVIC	24100	60"	12"	11'	17	13	30	31	21	22	RTU-1

GENERAL NOTES/ACCESSORIES:
 1. ACCEPTABLE MANUFACTURERS BY PROC. APPROVED, INC. RUSKIN CO.



RZ Design Associates, Inc.
 MECHANICAL, ELECTRICAL,
 AND SYSTEMS ENGINEERING
 100 WEST LITTLEFIELD
 SUITE 200
 FARMINGTON, CT 06030
 TEL: 860-671-1111
 FAX: 860-671-1112

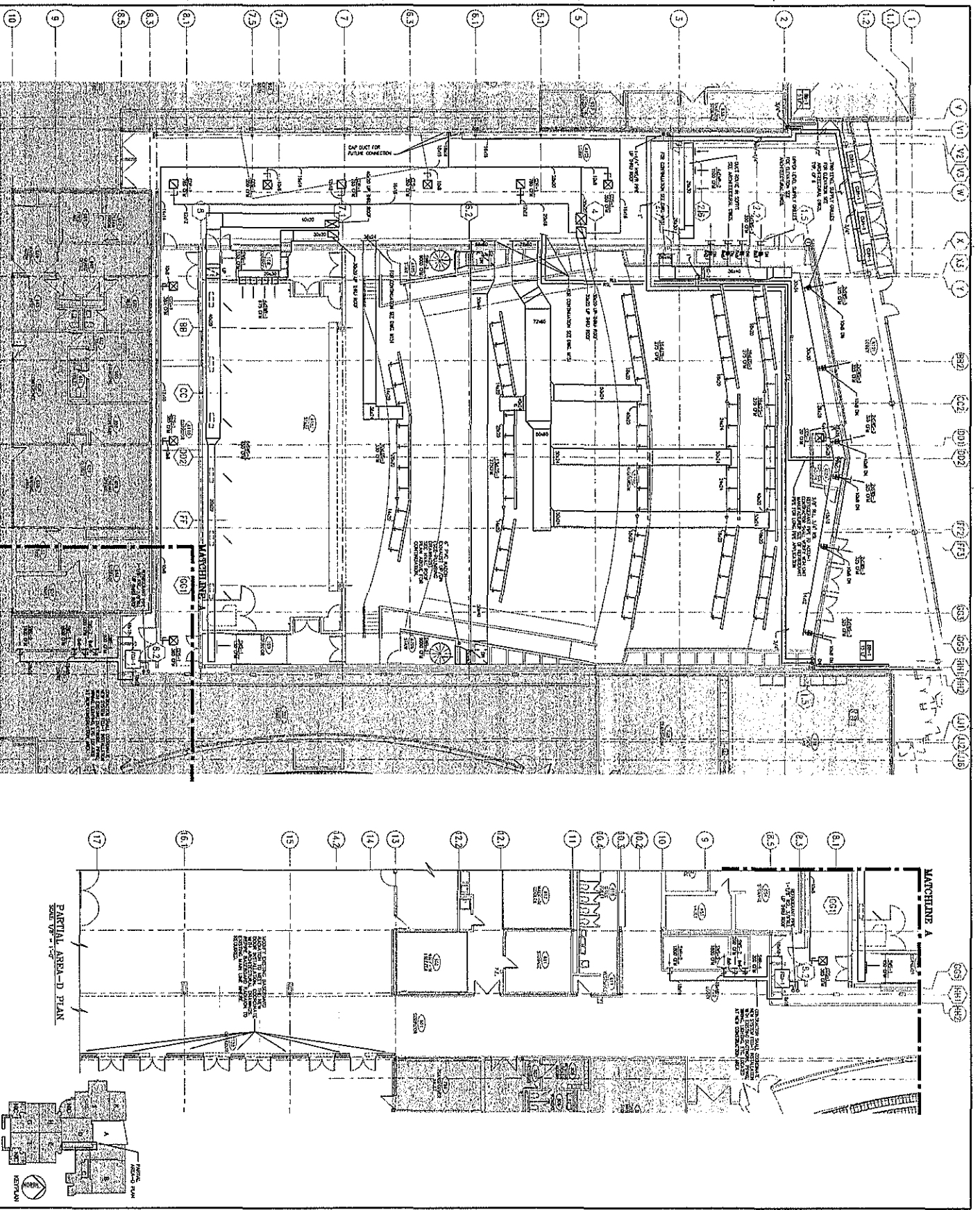
PROJECT NAME: Trumbull High School
72 Strobel Road
Trumbull, CT 06611

PROJECT NUMBER: 14-103
DESIGN DATE: 02/17/16
SCALE: AS NOTED

DATE: 02/17/16
SCALE: AS NOTED

MECHANICAL PLANS ELEVATION AND SCHEDULE

M101



REVISIONS: 01/25/09 01-02-29-2009

CONTRACT NO. 01-02-29-2009

DATE: 01/25/09

PROJECT: TRUMBULL HIGH SCHOOL

PHASE: PHASE 1A

ADDITIONS AND RENOVATIONS FOR TRUMBULL HIGH SCHOOL PHASE 1A

72 South Main
 Trumbull, Connecticut
 203M Trumbull, CT 06460

JCA ARCHITECTURE
 2000 Main Street, Suite 200
 Trumbull, CT 06460

ASSOCIATE ARCHITECT:
 WJ/S

DATE: 01/25/09

SCALE: 1/8" = 1'-0"

FLOOR PLAN
 AREA A-
 HVAC

M-111