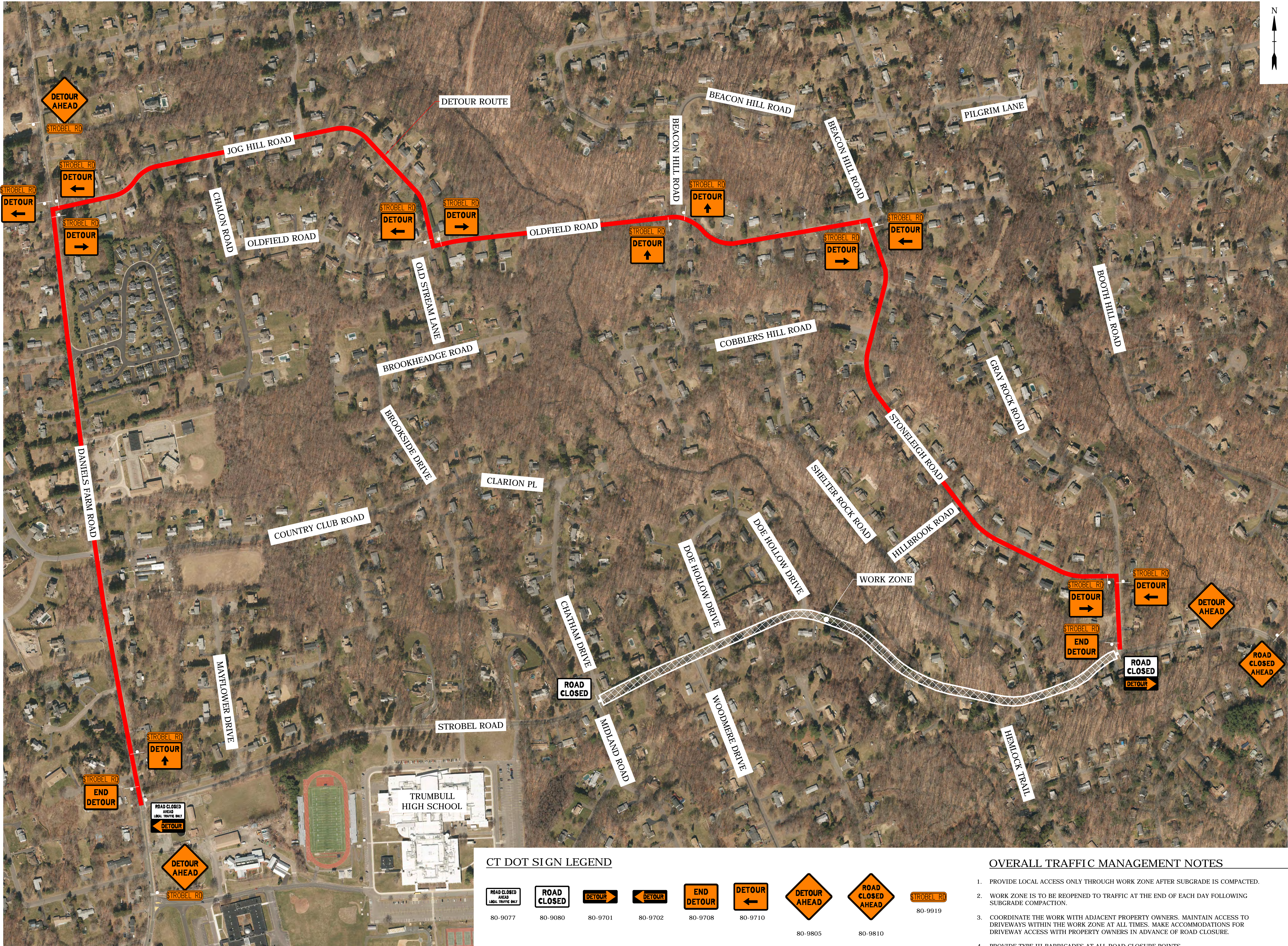
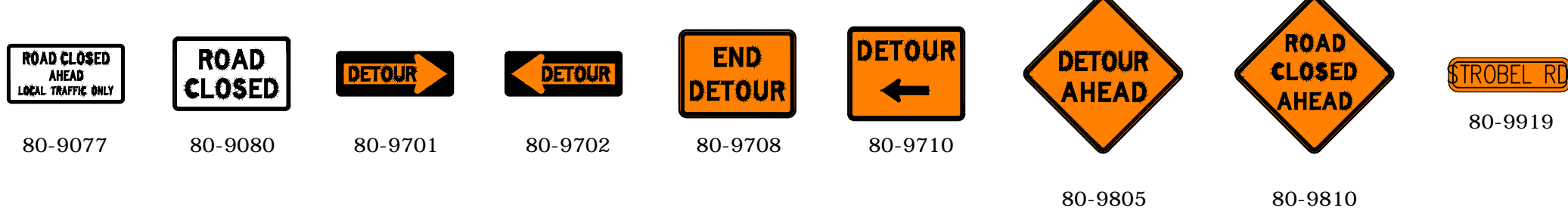


Issue: 01/18/2019
Project: 01/18/2019
Drawn By: Tighe & Bond
Checked By: Tighe & Bond
Approved By: Tighe & Bond



CT DOT SIGN LEGEND



OVERALL TRAFFIC MANAGEMENT NOTES

1. PROVIDE LOCAL ACCESS ONLY THROUGH WORK ZONE AFTER SUBGRADE IS COMPACTED.
2. WORK ZONE IS TO BE REOPENED TO TRAFFIC AT THE END OF EACH DAY FOLLOWING SUBGRADE COMPACTION.
3. COORDINATE THE WORK WITH ADJACENT PROPERTY OWNERS. MAINTAIN ACCESS TO DRIVEWAYS WITHIN THE WORK ZONE AT ALL TIMES. MAKE ACCOMMODATIONS FOR DRIVEWAY ACCESS WITH PROPERTY OWNERS IN ADVANCE OF ROAD CLOSURE.
4. PROVIDE TYPE III BARRICADES AT ALL ROAD CLOSURE POINTS.

Tighe & Bond
www.tighebond.com
1000 Bridgeport Avenue
Suite 320
Shelton, CT 06484
(203) 712-1100

SCALE IN FEET
0 150' 300'
GRAPHIC SCALE

STROBEL ROAD
RECONSTRUCTION
PROJECT

Trumbull, Connecticut

January 18, 2019

VERIFY SCALE
BAR IS 1 INCH ON
ORIGINAL DRAWING
0 1 INCH
IF NOT ONE INCH ON
THIS SHEET, ADJUST
SCALES ACCORDINGLY

MARK	DATE	DESCRIPTION
PROJECT NO:	T0196	
FILE:	T0196-015-TTC.dwg	
DRAWN BY:	ALW	
CHECKED:	AJM	
APPROVED:	AJM	

STROBEL ROAD WORK ZONE
CHATHAM DRIVE TO
GRAY ROCK ROAD

SCALE: 1" = 250'

TTC-002