



FOOD
RESCUE
US®

*Feeding our communities.
Protecting our planet.*

Haley Schulman
Co-Site Director
Food Rescue US - Fairfield County



More than **40 million Americans** don't have enough food to feed themselves and their families.....

ReFED, a national nonprofit working to end food waste, estimated that **almost 40% of food grown in the US is wasted and sent to the landfill.**

The numbers show there isn't a lack of food, but a lack of logistics to connect excess fresh food with the people who need it.

FOOD RESCUE US HAS THE SOLUTION.



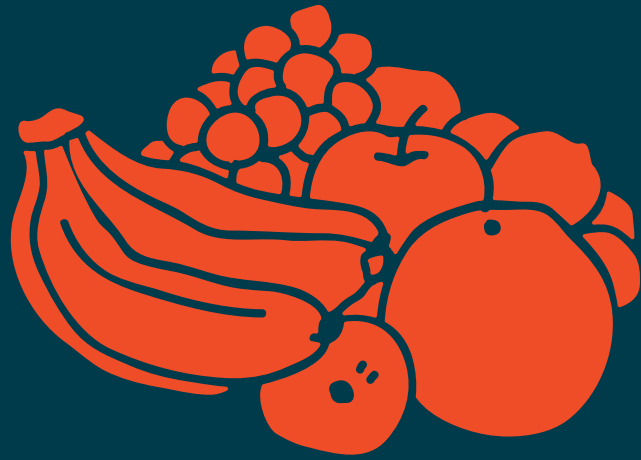
Food Rescue US is a national nonprofit committed to helping end hunger and food waste in America.

Food Rescue US is dedicated to eliminating hunger and food waste (keeping food out of landfills and reducing greenhouse gasses). We engage volunteers and food donors through our proprietary web-based app to directly transfer nutritious excess food to social service agencies serving the food insecure.



FOOD WASTE IN CT IS REAL

Of the food we throw away 70% was edible. In CT, 860,000 tons of trash are hauled out of state.



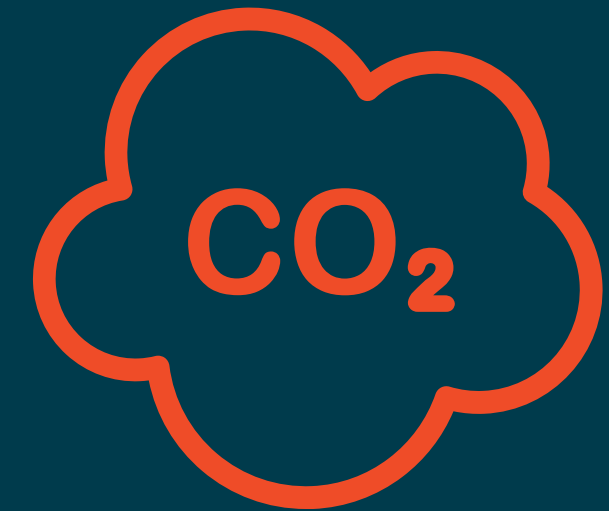
23%

**OF CT TRASH IS
FOOD**



21%

**OF FRESHWATER USE
GOES TO GROW FOOD
THAT IS WASTED**



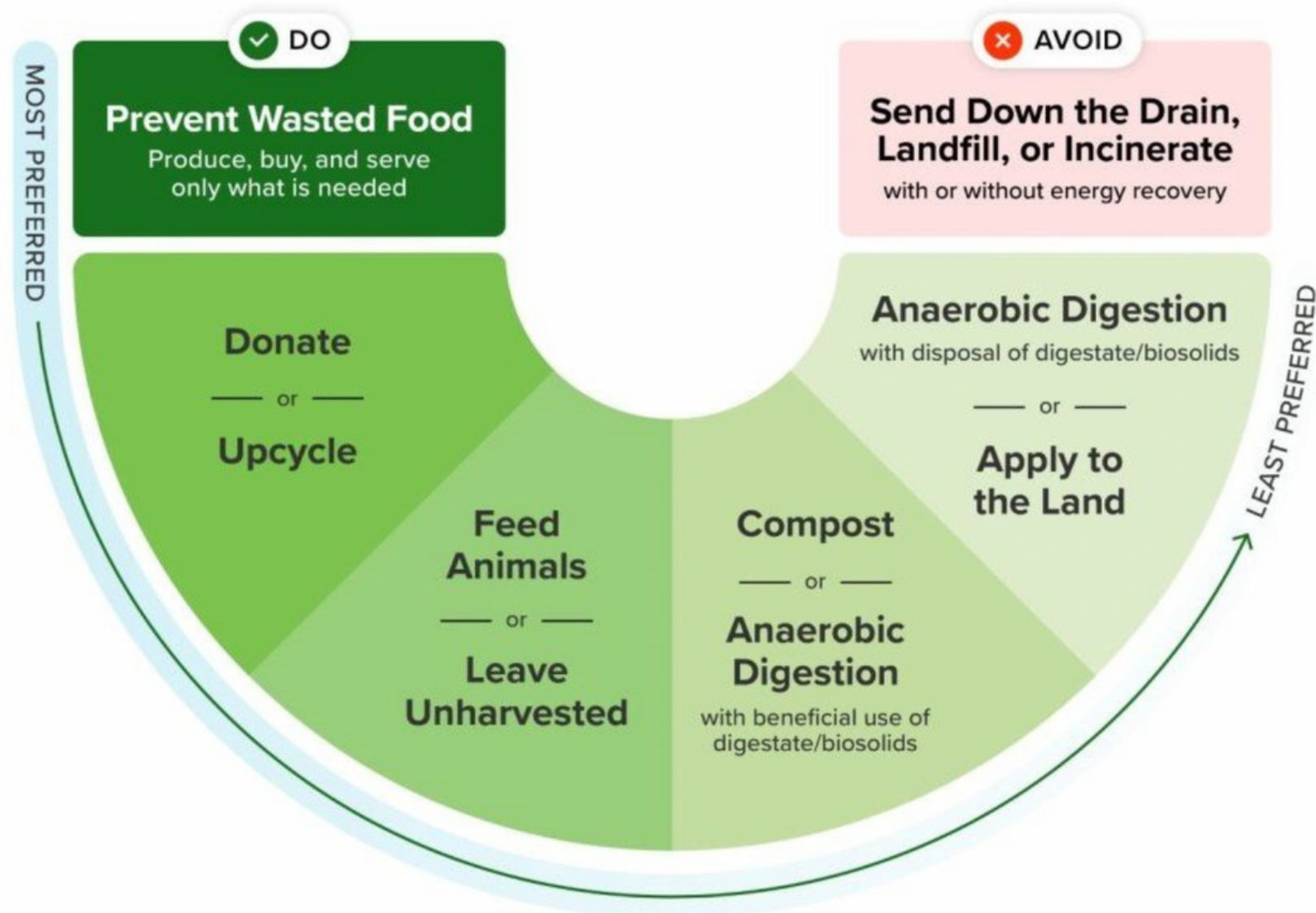
6%

**OF GLOBAL
EMISSIONS ARE DUE
TO FOOD WASTE**



Wasted Food Scale

How to reduce the environmental impacts of wasted food



FOOD
RESCUE
US®

Environmental Impact

- Food decomposing in a landfill creates methane gas
- Food hauled to an out of state landfill generates GHG in trucking process
- Food incinerated generates toxic fumes that contribute to acid rain
- Wasted food is a waste of precious resources: water, land, seeds, etc.
- Environmental justice communities are most impacted by climate change and hunger

HUNGER IN CT IS REAL

More than 490,000 people, including 131,000 children, in the United States are food insecure.



1 IN 8

**CHILDREN
ARE LIVING WITH
HUNGER**



8 IN 10

**LEADING CAUSES OF
DEATHS IN
ARE LINKED TO
HUNGER AND
MALNUTRITION**



8%

**OF CT RESIDENTS
LIVE IN FOOD
DESERTS**

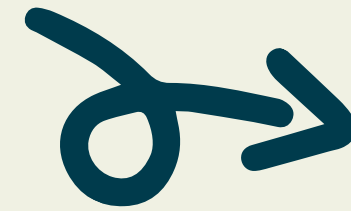


HOW OUR MODEL WORKS

Our volunteers rescue excess, fresh food from food donors and deliver it directly to local social service agencies that feed the food insecure.

- Food Donors: farms, restaurants, bakeries, farmers markets, schools, conventions, etc.
- Receiving Agencies: community kitchens, shelters, pantries, family centers, etc.

Food Donors



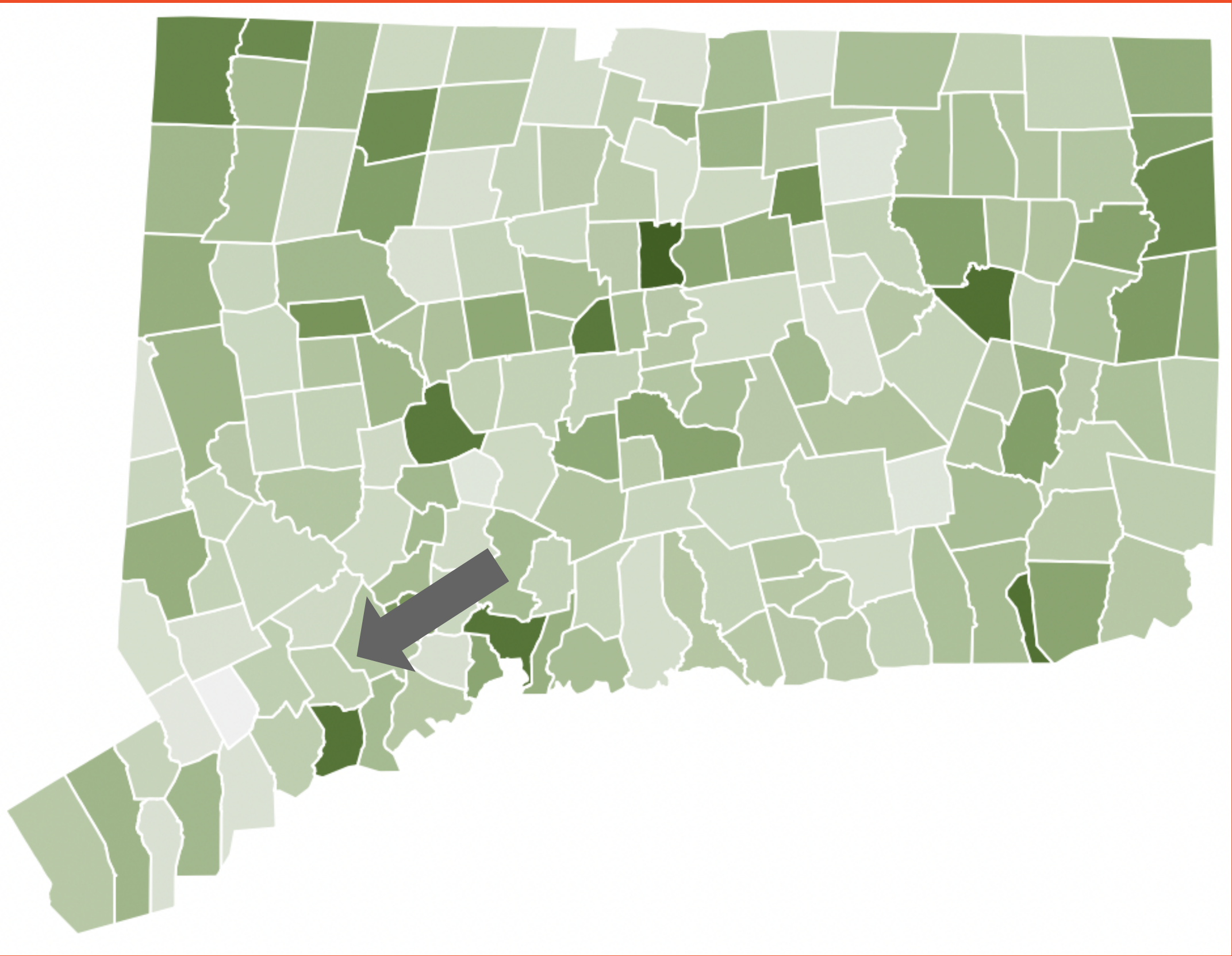
Food Rescuers



Receiving Agencies



FOOD INSECURITY IN FAIRFIELD COUNTY



Trumbull

Population 36,830

Food Insecurity Rate 7.5%

Poverty Rate 4.1%

Median Income \$138,801

Homeownership Rate 88%

Unemployment Rate 6.7%

% Black (All Ethnicities) 5.5%

% Hispanic (All Races) 9.1%

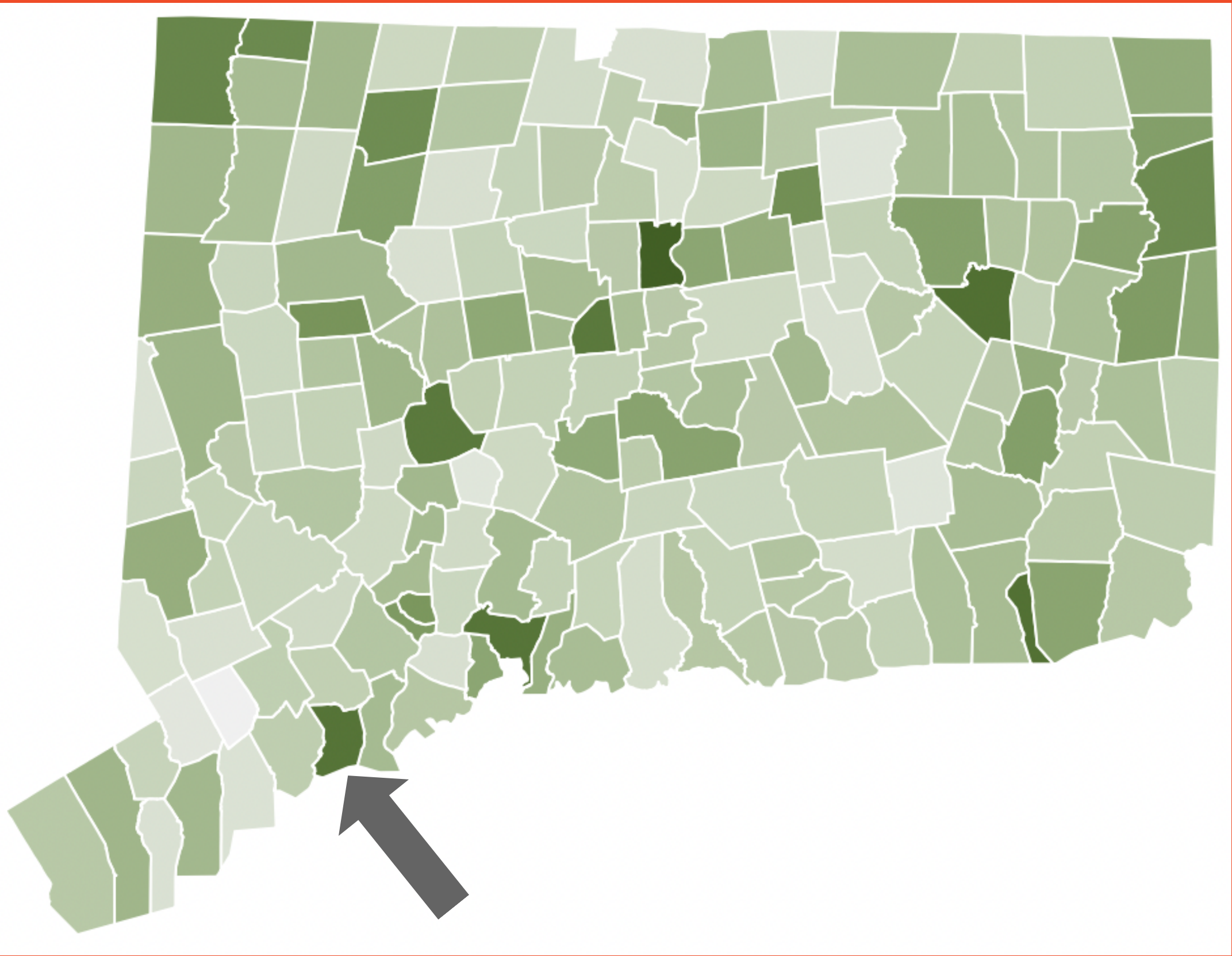
% Disabled 9.2%

Food Insecurity Rate

Poverty Rate

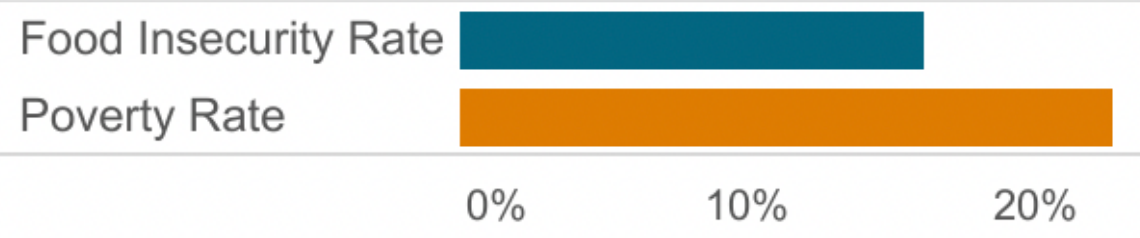
0% 2% 4% 6%

FOOD INSECURITY IN FAIRFIELD COUNTY



Bridgeport

Population	148,529
Food Insecurity Rate	16.2%
Poverty Rate	22.8%
Median Income	\$50,597
Homeownership Rate	43%
Unemployment Rate	9.8%
% Black (All Ethnicities)	38.1%
% Hispanic (All Races)	41.7%
% Disabled	15.6%



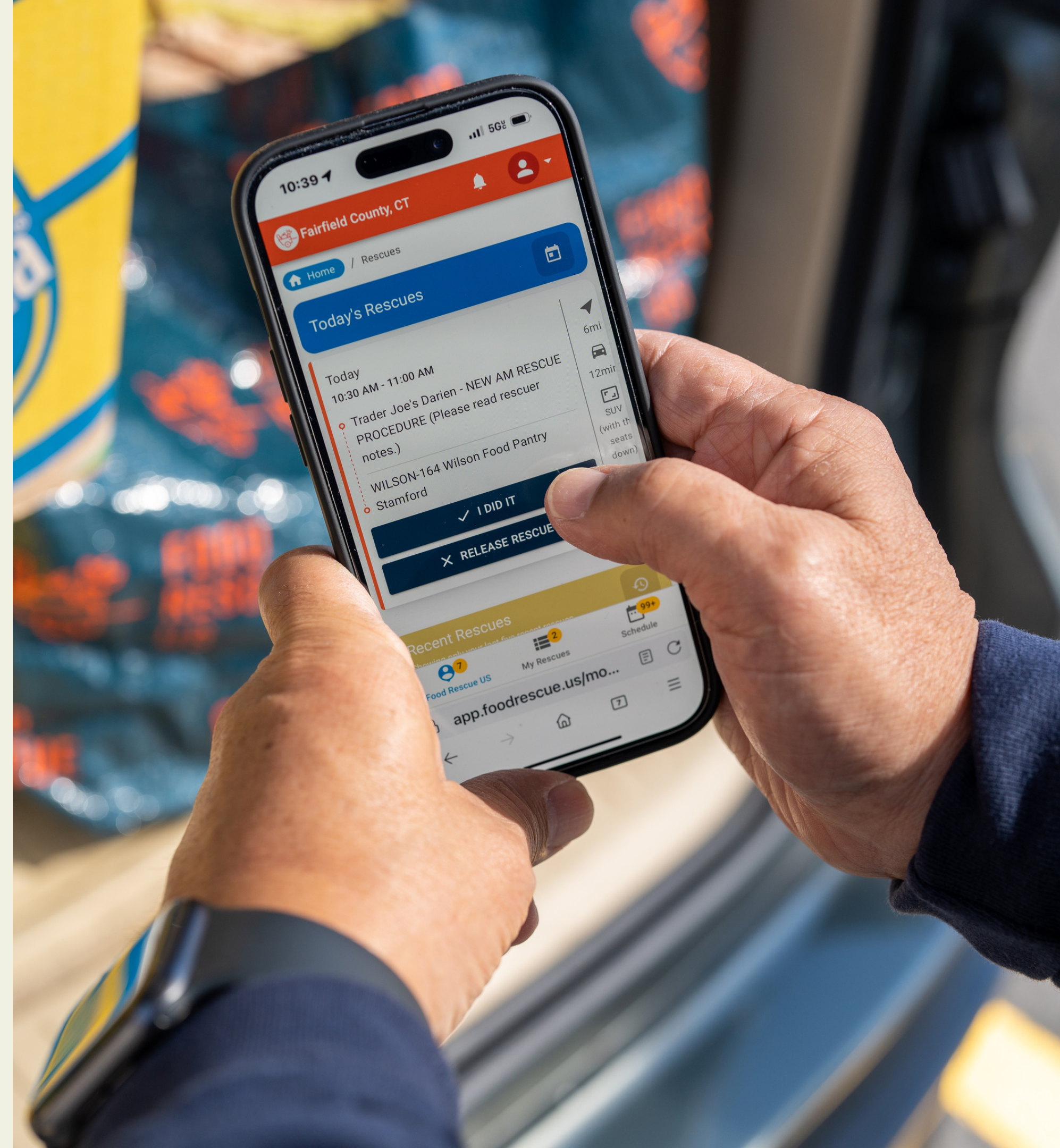


OUR APP

Our award-winning web-based app is integral to our model and is a large part of what makes Food Rescue US so sustainable and scalable.

Our app makes it easy for:

- Site Directors to coordinate our nearly 60,000 rescues a year.
- Volunteers to see and sign up for available rescues.



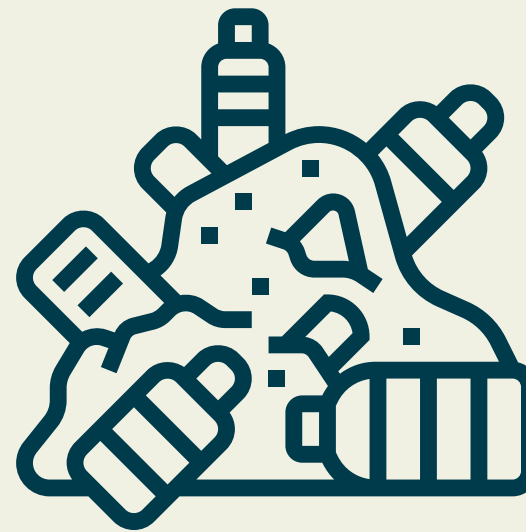
OUR IMPACT

A leader in food recovery since 2011, Food Rescue US - Fairfield County has a proven track record of impact and the ability to scale nationally.



40+

**MILLION MEALS
PROVIDED TO
THOSE IN NEED**



41+

**MILLION POUNDS
OF FOOD SAVED
FROM LANDFILLS**



3,500+

**VOLUNTEERS
LIFETIME**

**The metrics above are as of March 2023.*



**FOOD
RESCUE
US®**

WHERE WE ARE

- Chick Fil A
- Helen Keller Middle School
- J Bagels
- Marianna's Pantry
- St. Vincent's Medical Center
- Trader Joe's
- Whole Foods

WHO WE SERVE

- Baldwin Senior Center
- Bridgeport Rescue Mission
- Fridgeport
- Monroe Food Pantry
- Trumbull Housing Authority





GET INVOLVED

- Become a food rescuer
- Donate your excess food
- Connect us with a potential network partner
- Make a monetary donation
- Tell your friends!

CONTACT US

Haley@foodrescue.us, 203.610.3738

foodrescue.us

Follow us on Instagram: @foodrescueUS.fc



**FOOD
RESCUE
US®**