

Materials Recovery Facility (MRF) Inside Look



Where does your recycling go after you put it in your bin or drop it off at the Transfer Station?

Items are transported to the MRF to be sorted by material.

Let's take a look inside the MRF and learn what you can do to recycle better!

Sorting Equipment

Sorts paper, plastic, metal, & glass



Sorted materials are baled to be transported



What contaminates recycling?

- Loose plastic bags & other tangles
- Bagging your recyclables
- Dirty items
- Items that are not accepted



The MRF can refuse truckloads of recycling if >10% is contaminated



Loose Plastic Bags Damage Sorting Equipment



The sorting equipment is forced to stop about 3 times per day for 45 minutes to remove plastic bags, hoses, and other loose items that get tangled.

This cost is passed through to the town

Let's take closer look at the truckload
from Trumbull...



Bagged items do not get recycled



Loose plastic
bags and wrap
should not be put
in your recycling

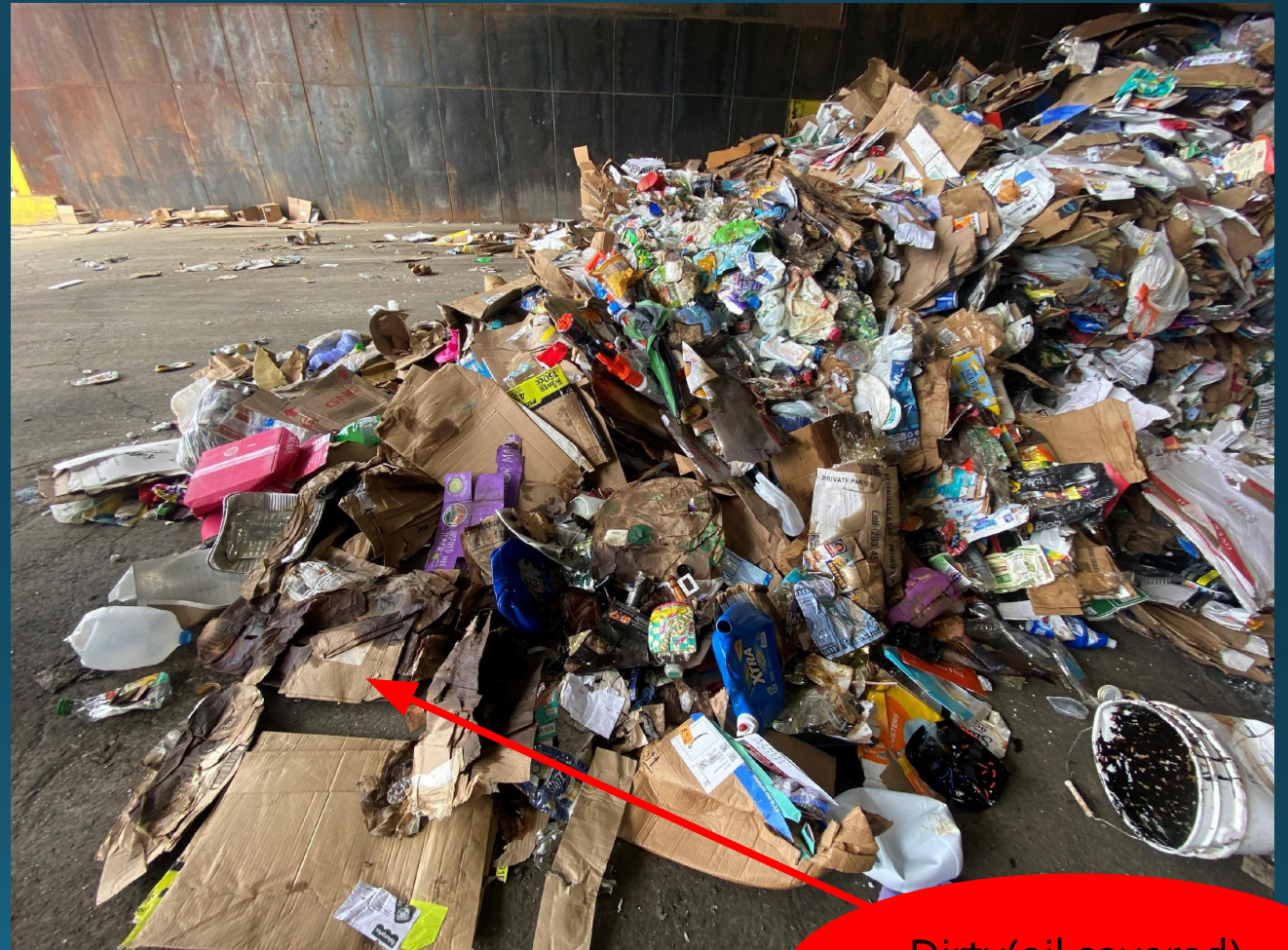
Plastic Bags &
Wrap



Items should be empty, rinsed, and dry

Plastic containers should be rinsed clean and free of food residue

Cardboard should be clean and dry, pizza boxes without oil can be recycled



Dirty(oil covered)
cardboard

Some common items that are not accepted & contaminate the load

Styrofoam

Textiles

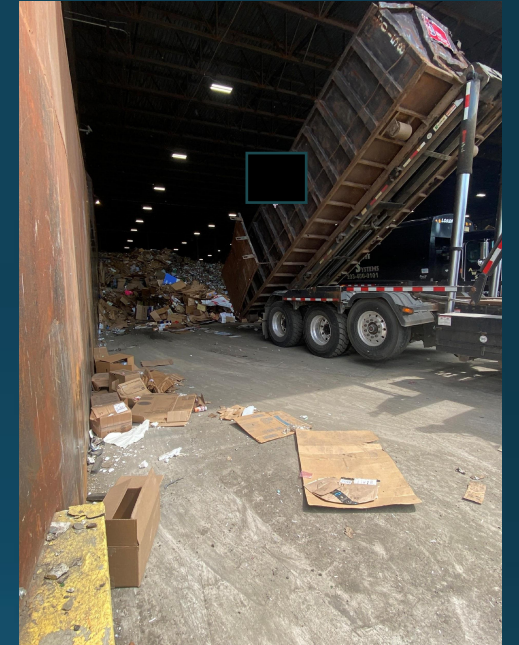
Plastic toys

Diapers

Personal Protective Equipment (face masks)

Tanglers such as hoses, wire, plastic bags

Shredded paper



Let's take a look at what we found in Trumbull's load

Luggage

Styrofoam



Styrofoam





Plastic
Bags

Metal
Chairs

Contaminated
Plastic Bucket



Plastic bags and
bagged items



Textiles/fabric
& Toys



WHAT'S IN

Plastic

- ✓ Plastic bottles (with or without caps attached)
- ✓ Plastic containers, tubs & lids
- ✓ Plastic one-use cups (no lids, no straws)



WHAT'S OUT

Plastic

- ✗ Black plastic trays and containers
- ✗ Loose bottle caps
- ✗ Plastic bags & wrap
- ✗ Plastic plates, bowls & utensils
- ✗ Prescription bottles
- ✗ Single-use coffee containers
- ✗ Styrofoam cups, containers & packaging peanuts
- ✗ Water filters



WHAT'S IN

Paper

- ✓ Cardboard & boxboard
- ✓ Food & beverage cartons
- ✓ Junk mail
- ✓ Magazines & newspaper inserts
- ✓ Newsprint
- ✓ Office paper
- ✓ Pizza boxes



WHAT'S OUT

Paper

- ✗ Gift wrap & gift bags
- ✗ Ice cream containers
- ✗ Paper cups (hot & cold)
- ✗ Shredded paper
- ✗ Take-out food containers
- ✗ Tissue paper



WHAT'S IN

Metal

- ✓ Aerosol containers (food grade only)
- ✓ Aluminum foil
- ✓ Cans & bottles
- ✓ Foil containers
- ✓ Metal lids from cans & bottles



WHAT'S OUT

Metal

- ✗ Aerosol containers (deodorizers, cleaners, pesticides, etc.)
- ✗ Foil tops from yogurt containers
- ✗ Paint cans
- ✗ Pots and Pans
- ✗ Small pieces of scrap metal
- ✗ Spiral wound containers



WHAT'S IN

Glass

✓ Beverage bottles & jars

✓ Food bottles & jars



WHAT'S OUT

Glass

✗ Ceramic mugs & plates

✗ Drinking glasses



Note: Glass can be dropped off at the Trumbull Transfer Station to be recycled creating a cost savings to the town and you!



Single stream recycling information
www.recyclect.com

Trumbull town-specific recycling information:
www.trumbull-ct.gov/903/Reduce-Reuse-Recycle

CAN I RECYCLE IT?
Find out using our RecycleCT Wizard

Please type in the name of a material:

Search

**RECYCLE RIGHT.
RECYCLE SMART.**

Download the app today!

The banner features a hand holding a smartphone displaying the RecycleCT app interface, which includes the text 'What's IN? What's OUT?' and images of a water bottle, an egg carton, and a can.

Home > Community > Sustainable Trumbull > Reduce, Reuse, Recycle

Reduce, Reuse, Recycle

- [Monthly Recycling Drive-Full List \(PDF\)](#)
- [Savor Sustainability - Tips for Creating An Earth-Friendly Dining Experience \(PDF\)](#)
- [Recycle Vs. Wish-Cycle \(PDF\)](#)

Transfer Station / Recycling Center

The Transfer Station is a processing site where Trumbull, Monroe, and Easton residents can bring their local waste and recycling items. Waste is temporarily collected before it is transported to disposal in an incinerator, landfill, hazardous waste, or recycling facility.

Recycle vs. Wish-Cycle

Recycle Right. Every Time. Use this Guide to learn What's In and What's Out of your recycling bin.

Recycling Drop-Off: Trumbull Health Department

The Trumbull Health Department and Sustainable Trumbull have partnered to offer additional recycling locations in town.

Recycling Drop-Off: Trumbull Library

The Trumbull Library and Sustainable Trumbull have partnered to increase recycling in town.

Monthly Recycling Drive

Sustainable Trumbull hosts a monthly recycling drive on the 2nd Saturday of the month from 9:00 AM to 12:00 PM at Trumbull High School. We have teamed up with Terracycle, Crayola, Planet Green Recycling, and TREX to collect hard-to-recycle items to be repurposed.

Textile Recycling Program

Lear more about the Bay State Textile and Helpsy Curbside Recycling Programs.

Plastic Film Collection

Stretchy plastic film, such as produce bags, dry cleaning bags, the wrap around paper towels and diapers, and more, can be recycled along with plastic bags. Give your plastic film a second life through recycling.