

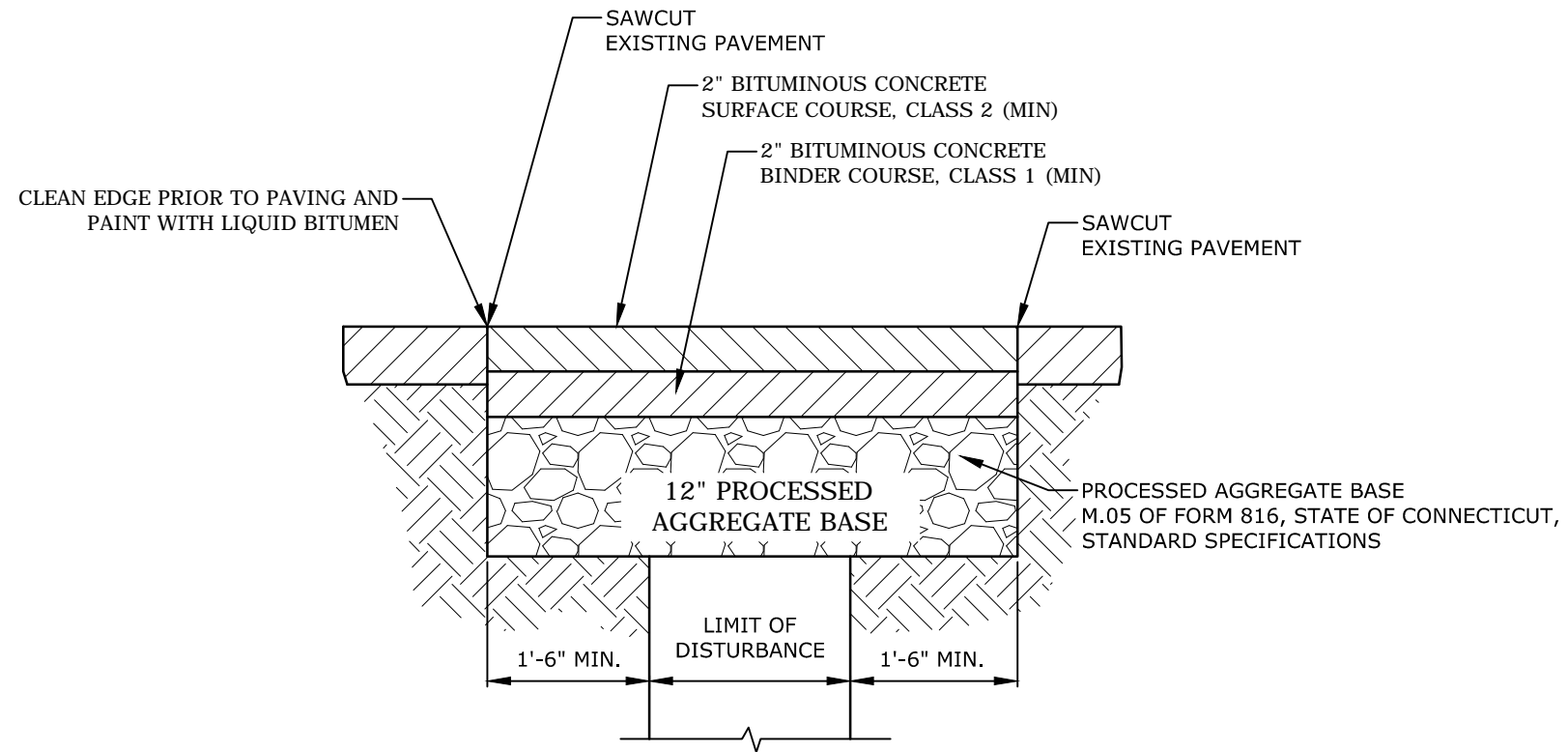
# TOWN OF TRUMBULL

## STANDARD DETAILS

### INDEX

1. PERMANENT PAVEMENT REPAIR DETAIL .....	SHEET PM-01
2. PRECAST CHIMNEY DETAIL .....	SHEET SS-01
3. SANITARY SEWER POINT REPAIR DETAIL .....	SHEET SS-02
4. TYPICAL SANITARY SEWER TRENCH SECTION DETAIL .....	SHEET SS-03
5. TEMPORARY PAVEMENT REPAIR DETAIL .....	SHEET SS-04
6. PRECAST SANITARY MANHOLE DETAIL .....	SHEET SS-05
7. TYPE "C" CATCH BASIN DETAIL .....	SHEET ST-01A
8. TYPE "C" CATCH BASIN DETAIL .....	SHEET SW-01B
9. 48" PRECAST MANHOLE .....	SHEET SW-02
10. CIRCULAR R.C.P. TRENCH BEDDING DETAIL .....	SHEET SW-03
11. HDEP TRENCH BEDDING DETAIL .....	SHEET SW-04
12. INSIDE DROP MANHOLE DETAIL .....	SHEET SW-05
13. TYPE "C-L" CATCH BASIN DETAIL .....	SHEET SW-06A
14. TYPE "C-L" CATCH BASIN DETAIL .....	SHEET SW-06B

Aug 21, 2014-10:20am Plotted By: adm  
Tighe & Bond, Inc. J:\T\10196\24\_Town of Trumbull Standard Details\Pavement\PM-01.dwg

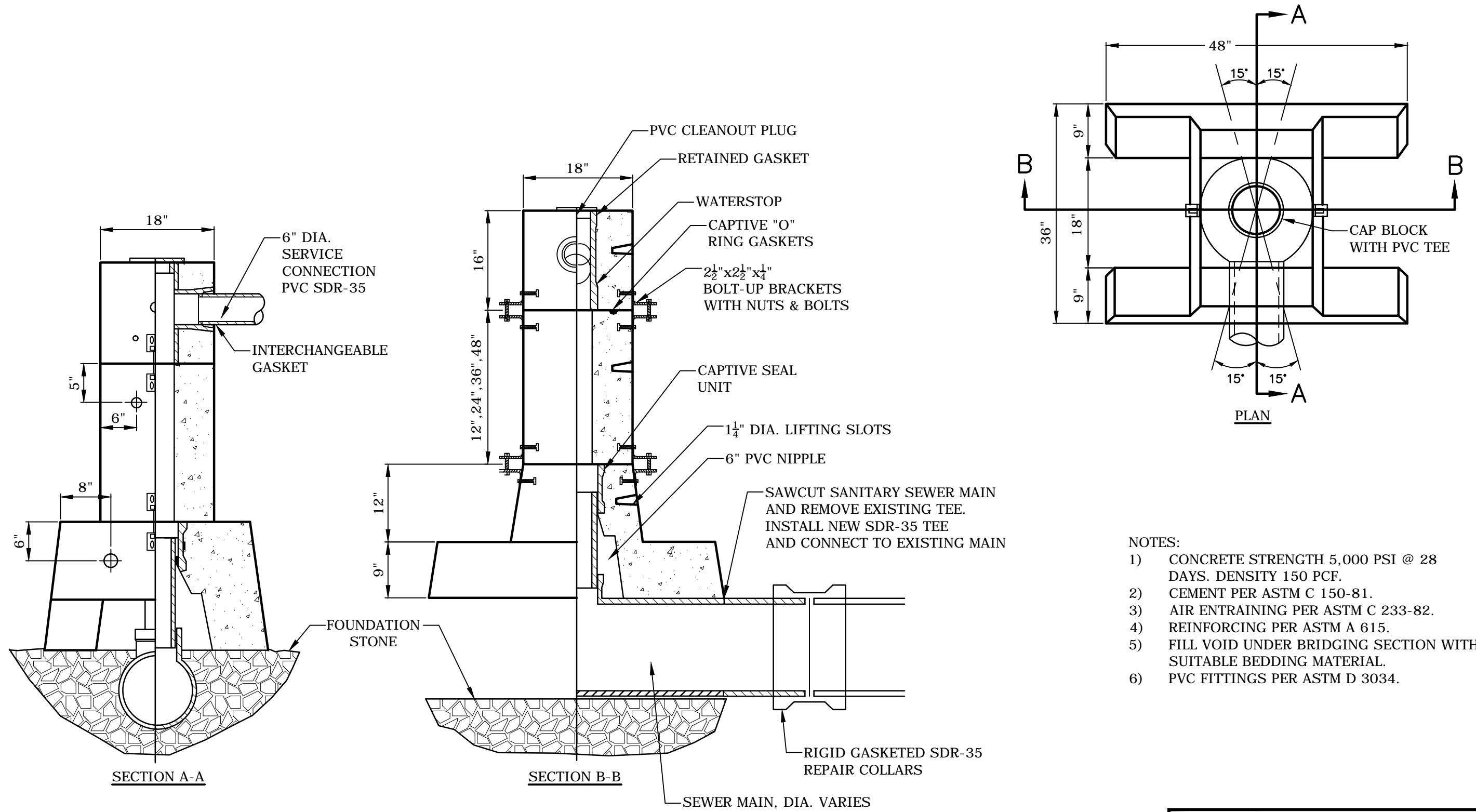


NOTE:  
ASPHALT THICKNESS AS PART OF FINAL RESTORATION SHALL MATCH THE THICKNESS OF THE EXISTING ROAD OR THE MINIMUM OF 4", WHICHEVER IS GREATER.

**PERMANENT PAVEMENT REPAIR**  
NO SCALE

OFFICE OF THE TOWN ENGINEER TOWN OF TRUMBULL 5866 Main Street (203) 452-5050	
PERMANENT PAVEMENT REPAIR DETAIL TRUMBULL, CONNECTICUT	
Scale: NTS	Date: 8/15/2014
Drawn by:	Grid:
Approved by:	Sheet: PM-01

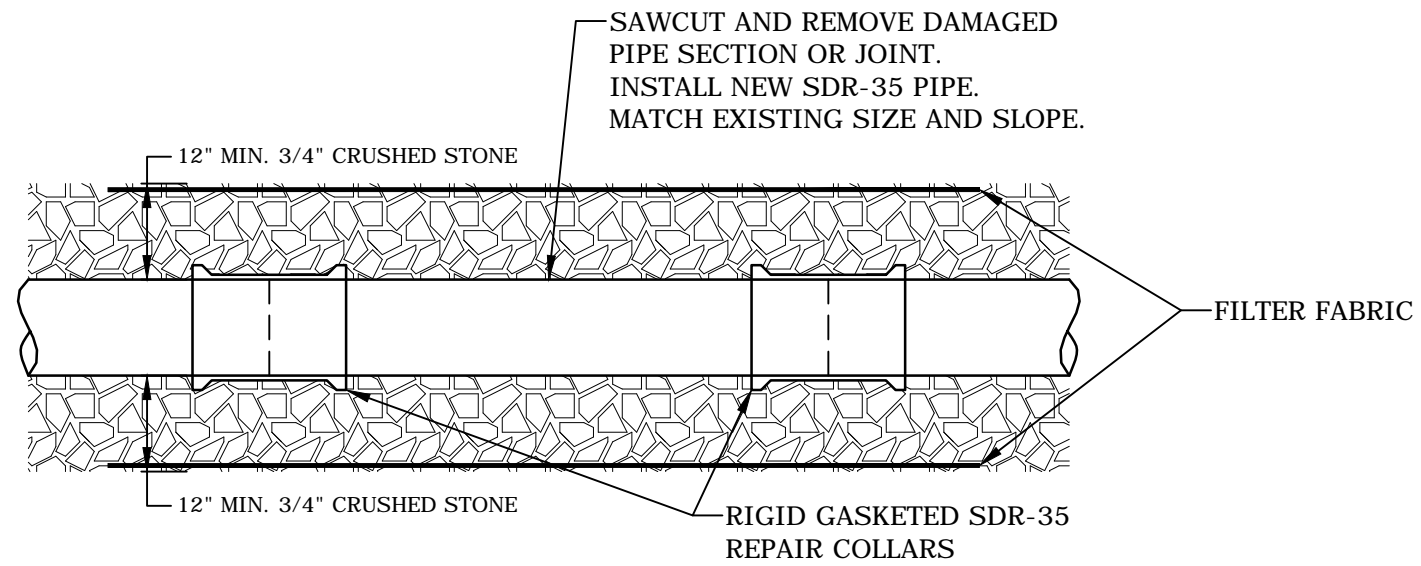
Aug 21, 2014-10:20am Plotted By: adm  
Tighe & Bond, Inc. J:\VT\0196\24\_Town of Trumbull Standard Details\Sanitary\SS-01.dwg



- NOTES:**
- 1) CONCRETE STRENGTH 5,000 PSI @ 28 DAYS. DENSITY 150 PCF.
  - 2) CEMENT PER ASTM C 150-81.
  - 3) AIR ENTRAINING PER ASTM C 233-82.
  - 4) REINFORCING PER ASTM A 615.
  - 5) FILL VOID UNDER BRIDGING SECTION WITH SUITABLE BEDDING MATERIAL.
  - 6) PVC FITTINGS PER ASTM D 3034.

**PRECAST CHIMNEY**  
NO SCALE

OFFICE OF THE TOWN ENGINEER TOWN OF TRUMBULL 5866 Main Street (203) 452-5050	
PRECAST CHIMNEY DETAIL TRUMBULL, CONNECTICUT	
Scale: xxxxxx	Date: 8/15/2014
Drawn by:	Grid:
Approved by:	Sheet: SS-01



**SANITARY SEWER POINT REPAIR**

NO SCALE

OFFICE OF THE TOWN ENGINEER  
TOWN OF TRUMBULL  
5866 Main Street (203) 452-5050

SANITARY SEWER POINT REPAIR DETAIL  
TRUMBULL, CONNECTICUT

Scale: xxxxxx

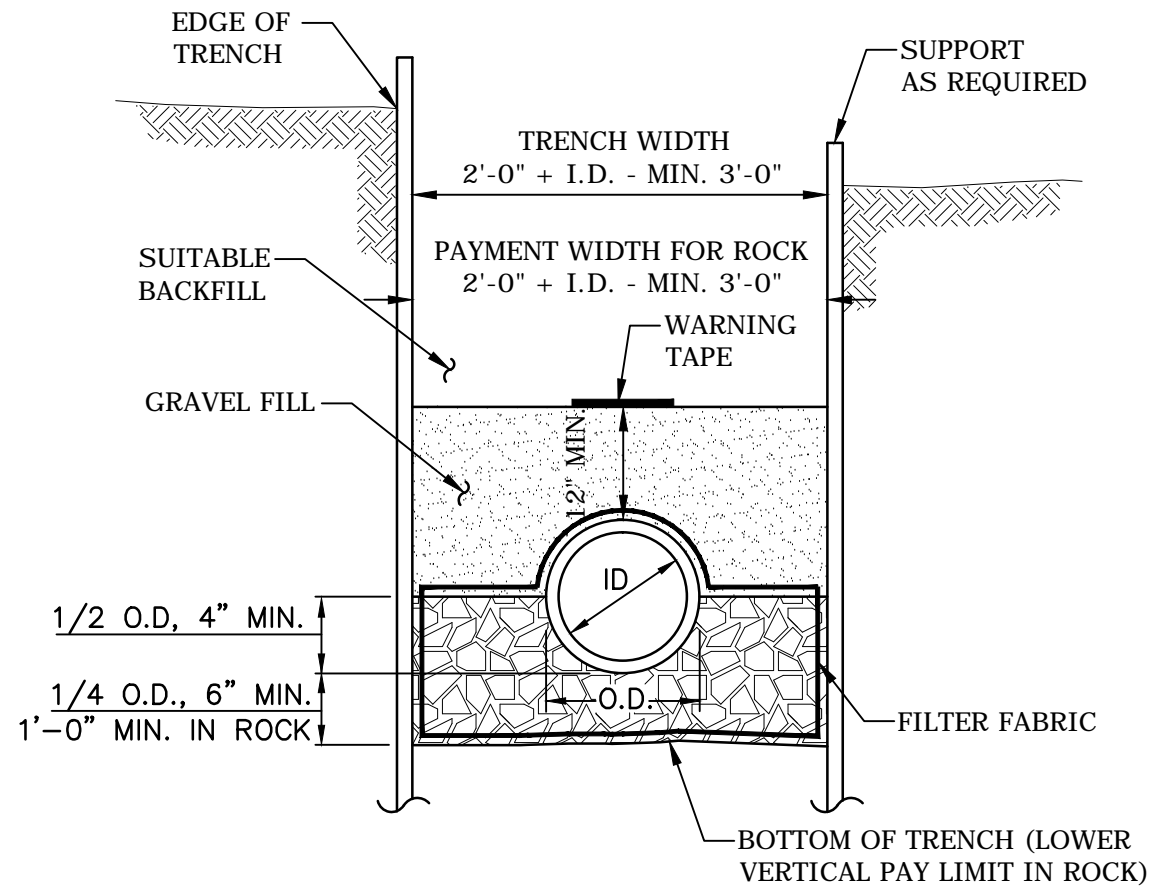
Date: 8/15/2014

Drawn by:

Grid:

Approved by:

Sheet: SS-02

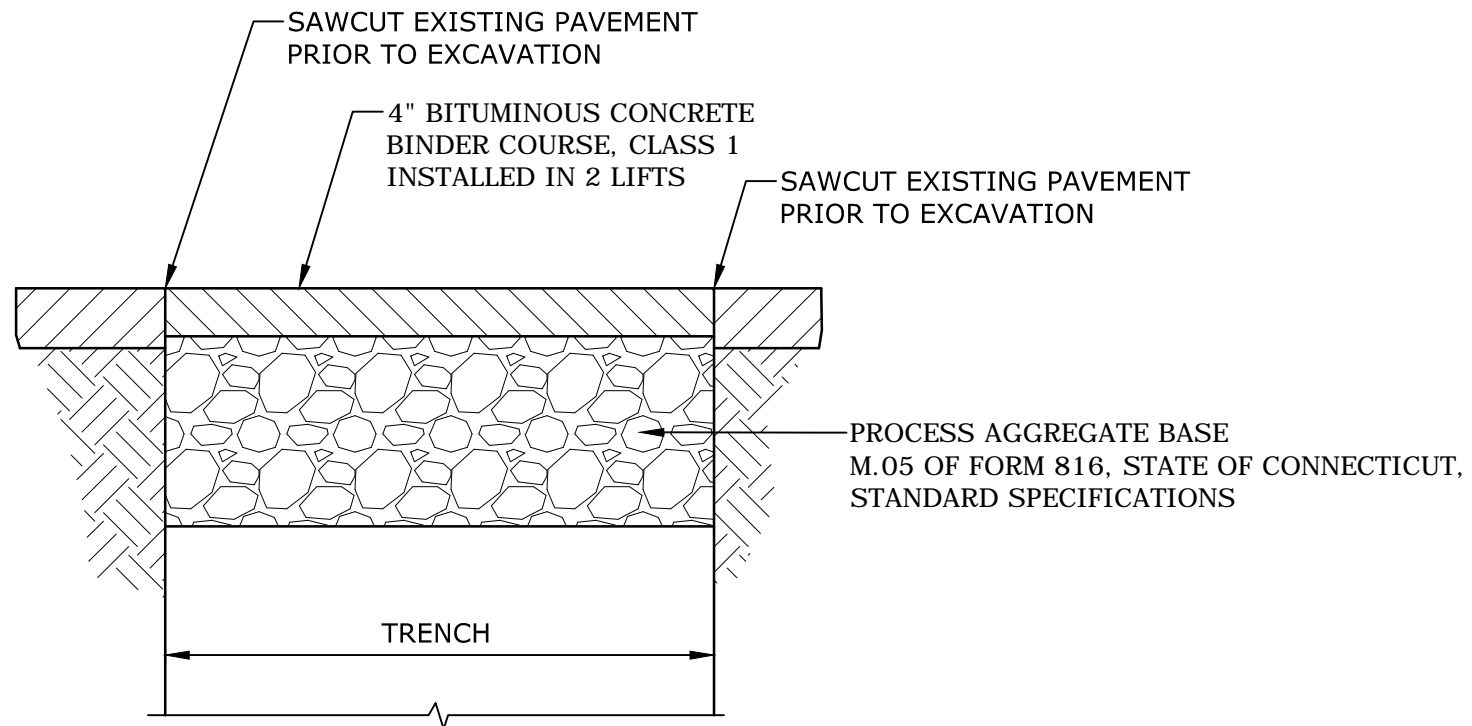


**TYPICAL SANITARY SEWER TRENCH SECTION**  
NO SCALE

Aug 21, 2014-10:20am Plotted By: adm  
Tighe & Bond, Inc. J:\T\T0196\24\_Town of Trumbull Standard Details\Sanitary\SS-03.dwg

OFFICE OF THE TOWN ENGINEER TOWN OF TRUMBULL 5866 Main Street (203) 452-5050	
TYPICAL SANITARY SEWER TRENCH SECTION DETAIL TRUMBULL, CONNECTICUT	
Scale: NTS	Date: 8/15/2014
Drawn by:	Grid:
Approved by:	Sheet: SS-03

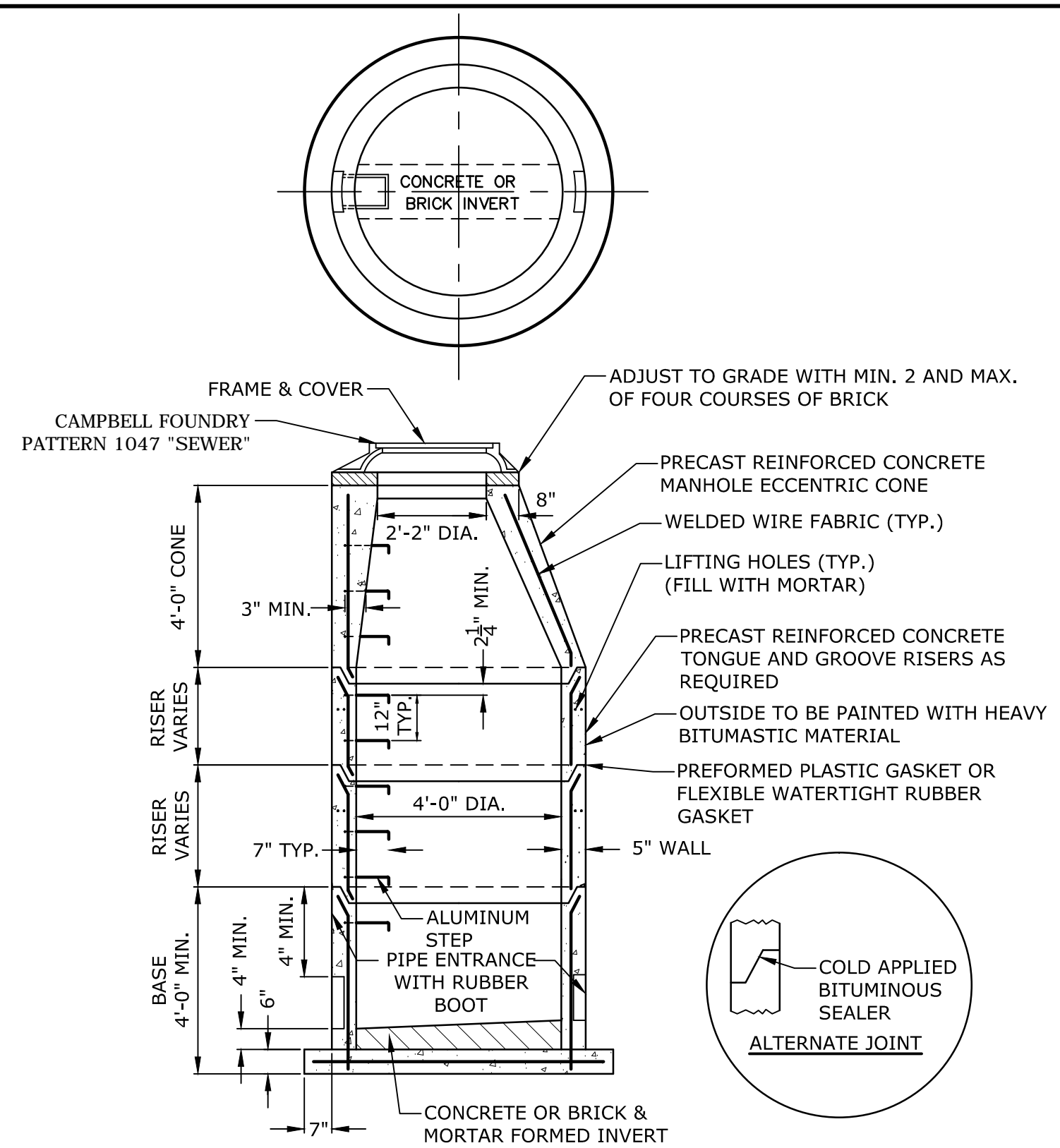
Aug 21, 2014-10:20am Plotted By: adm  
Tighe & Bond, Inc. J:\T\10196\24\_Town of Trumbull Standard Details\Sanitary\SS-04.dwg



**TEMPORARY PAVEMENT REPAIR**  
NO SCALE

OFFICE OF THE TOWN ENGINEER TOWN OF TRUMBULL 5866 Main Street (203) 452-5050	
TEMPORARY PAVEMENT REPAIR DETAIL TRUMBULL, CONNECTICUT	
Scale: NTS	Date: 8/15/2014
Drawn by:	Grid:
Approved by:	Sheet: SS-04

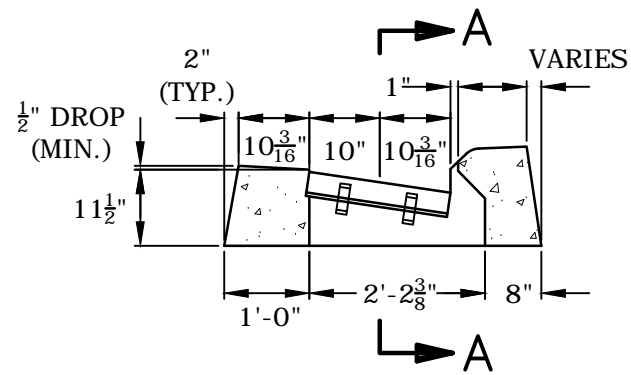
Aug 21, 2014-10:20am Plotted By: adm  
 Tighe & Bond, Inc. J:\T\10196\24\_Town of Trumbull Standard Details\Sanitary\SS-05.dwg



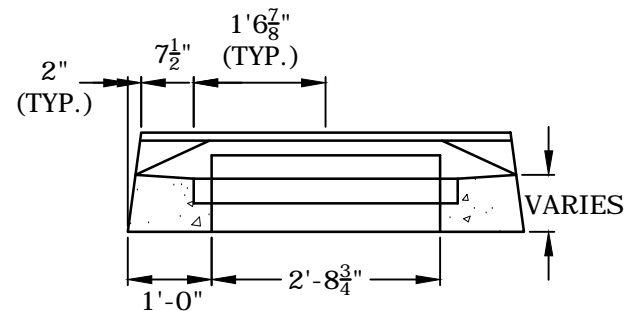
5' OR 6' DIA. PRECAST BASES MAY BE USED WHEN REQUIRED DUE TO SIZE OR NUMBER OF PIPES AT THE MANHOLE.  
 PRECAST REDUCERS WILL BE PLACED ABOVE THE 5' & 6' BASES AS DIRECTED BY THE ENGINEER.  
 WALL THICKNESS TO INCREASE 1" FOR EACH 1' OF INSIDE DIAMETER INCREASE.

**PRECAST SANITARY MANHOLE**  
 NO SCALE

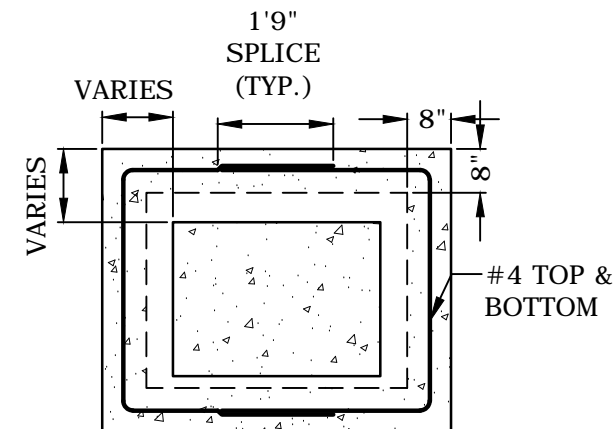
OFFICE OF THE TOWN ENGINEER TOWN OF TRUMBULL 5866 Main Street (203) 452-5050	
PRECAST SANITARY MANHOLE DETAIL TRUMBULL, CONNECTICUT	
Scale: NTS	Date: 8/15/2014
Drawn by:	Grid:
Approved by:	Sheet: SS-05



CROSS SECTION

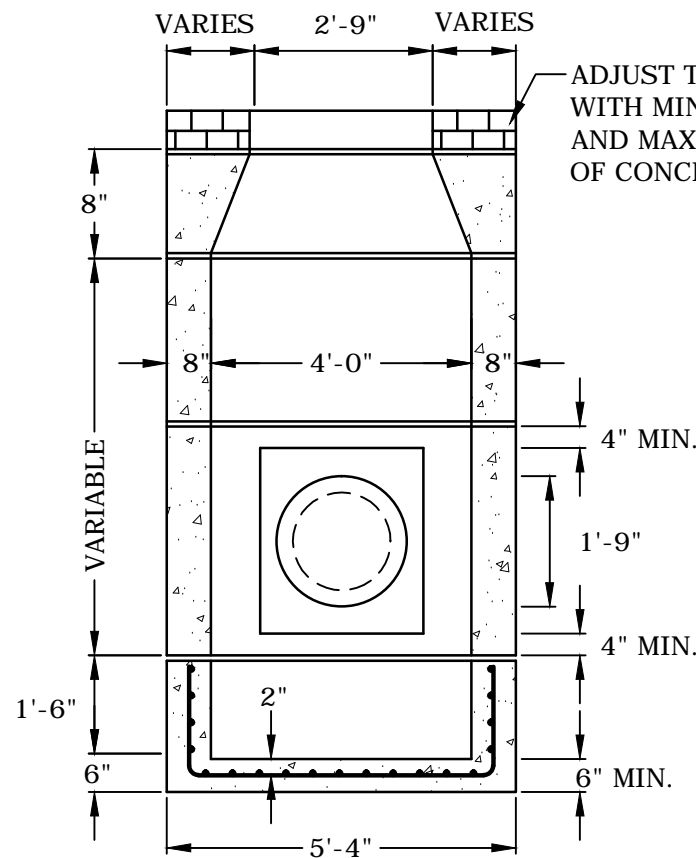
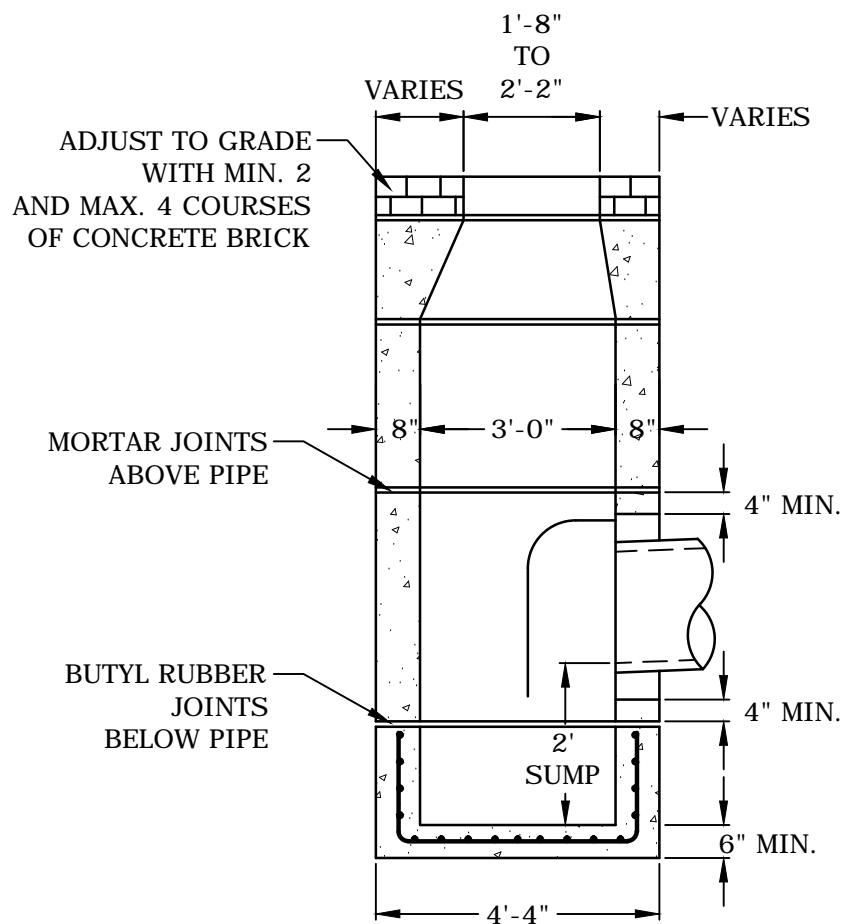


SECTION A-A

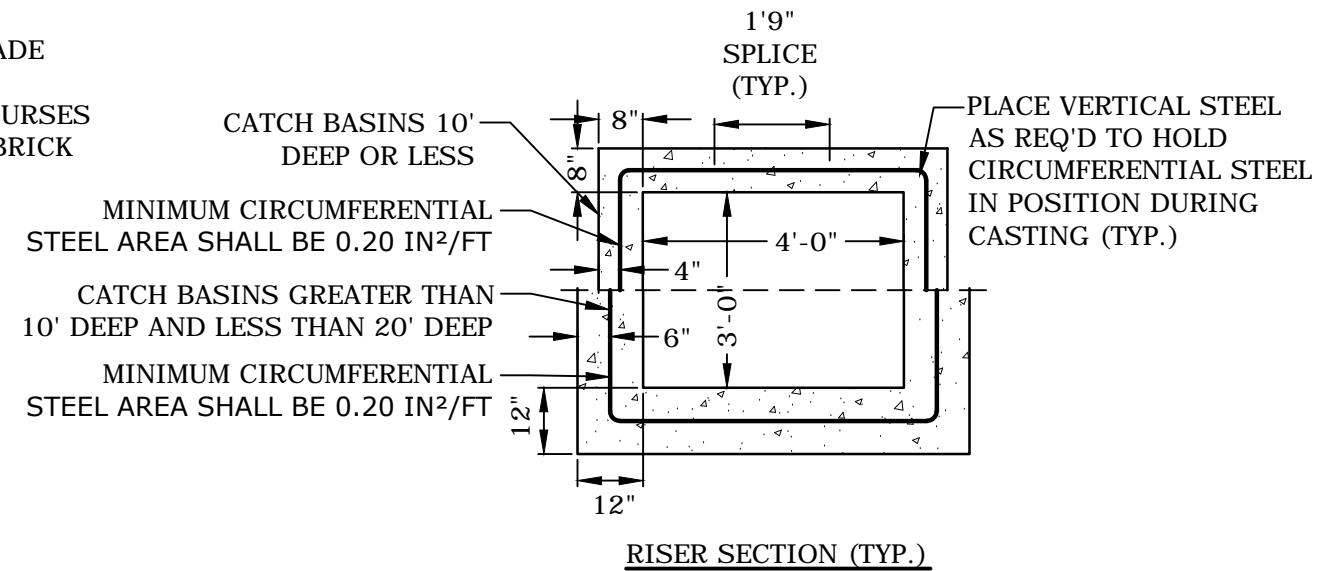


REDUCER SECTION (TYP.)

USE GALVANIZED GRATE & FRAME



INSTALL BELL TRAP ON PIPE OUTLET



RISER SECTION (TYP.)

CONNECTICUT DEPARTMENT OF TRANSPORTATION

**TYPE "C" CATCH BASIN**

NO SCALE

OFFICE OF THE TOWN ENGINEER  
TOWN OF TRUMBULL  
5866 Main Street (203) 452-5050

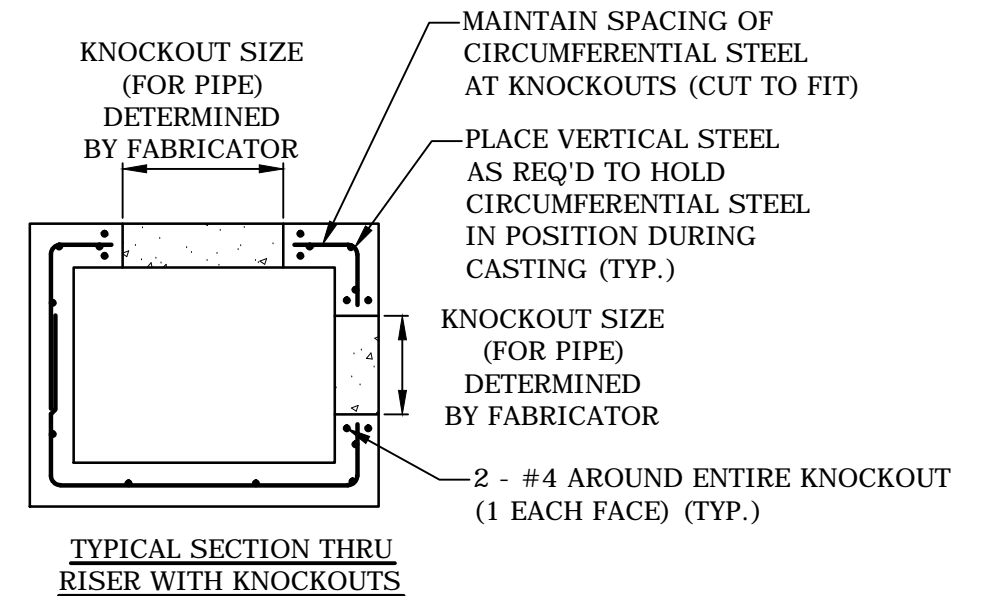
TYPE "C" CATCH BASIN DETAIL  
TRUMBULL, CONNECTICUT

Scale: NTS	Date: 8/15/2014
Drawn by:	Grid:
Approved by:	Sheet: ST-01A



NOTES:

1. REINFORCEMENT SHALL CONFORM TO ASTM A615, GRADE 60.
2. DETAILS ON THIS SHEET SHOW STANDARD REINFORCEMENT. WELDED WIRE FABRIC WITH AN AREA EQUAL TO OR GREATER THAN THE REINFORCING SHOWN MAY BE SUBSTITUTED.
3. ALL LAP SPLICES, DEVELOPMENT LENGTHS, BENDS FOR REINFORCEMENT, AND WELDED WIRE FABRIC SHALL CONFORM TO AASHTO STANDARD SPECIFICATIONS FOR HIGHWAY BRIDGES.
4. ALL REINFORCEMENT SHALL HAVE A MINIMUM CLEAR COVER OF 2", EXCEPT FOR BENEATH BOTTOM REINFORCEMENT IN TOP SLABS, WHERE THE MINIMUM MAY BE 1 1/2"
5. MINIMUM CONCRETE COMPRESSIVE STRENGTH FC'=4,000PSI SHALL BE OBTAINED BEFORE SHIPPING.
6. BASES AND RISERS AT A DEPTH OF 20' AND GREATER SHALL BE DESIGNED BY THE CONTRACTOR AND WORKING DRAWINGS SHALL BE SUBMITTED TO THE ENGINEER FOR REVIEW.
7. SEE STANDARD CTDOT DRAWING 507-K FOR CATCH BASIN FRAMES AND GRATES.
8. FOR DOT MAINTENANCE PERSONNEL, RISERS MAY BE PREFABRICATED WITH PIPE OPENINGS IN ALL FOUR WALLS. ADEQUATE REINFORCING AROUND PIPE OPENINGS TO CONFORMING TO THESE PLANS SHALL BE PROVIDED. ANY RISERS USED WHERE A PIPE OPENING IS TO REMAIN IN PLACE MUST BE FORMED UP WITH BRICK AS DIRECTED BY THE ENGINEER.
9. RISERS SHALL NEVER HAVE CORNER PIPE ENTRIES. WHERE THE ALIGNMENT OF THE PIPE WITH RESPECT TO THE CORNER OF THE CATCH BASIN CANNOT BE CHANGED, A ROUND STRUCTURE CONFORMING TO ASTM C478 SHALL BE USED. REINFORCING FOR THE ROUND TOP SLAB WITH A RECTANGULAR OPENING SHALL CONFORM TO DETAILS SHOWN HERE.
10. ALL PIPE OPENINGS SHALL BE CLOSED USING MATERIALS WHICH CONFORM TO STATE OF CONNECTICUT STANDARD SPECIFICATIONS SECTION M.08.02. IF THE ENGINEER DETERMINES THAT THE CLOSURE OF ANY PIPE OPENING IS UNSATISFACTORY, THE CONTRACTOR SHALL RECLOSE SAID OPENING AT NO ADDITIONAL COST TO THE STATE. KNOCKOUTS FOR PIPE OPENINGS SHALL NOT RESULT IN A REDUCED WALL THICKNESS.
11. THE LATEST STATE OF CONNECTICUT STANDARD SPECIFICATIONS AND SUPPLEMENTAL SHALL GOVERN.
12. FOR ADDITIONAL DETAILS, SEE OTHER CATCH BASIN SHEETS.
13. WALL THICKNESS OF ALL CB'S OVER 10' DEEP SHALL BE INCREASED TO 12" THICK. INSIDE DIMENSION SHALL REMAIN THE SAME. (THE 12" THICKNESS SHALL START AFTER THE FIRST 10")
14. BUTYL RUBBER JOINT SEAL SHALL CONFORM TO AASHTO M-198 AND MORTAR SHALL CONFORM TO THE LATEST STATE OF CONNECTICUT STANDARD SPECIFICATIONS MATERIAL SECTION M11.04.
15. SHRINKAGE AND TEMPERATURE REINFORCEMENT SHALL BE PROVIDED IN THE TOPS OF SLABS. THE TOTAL AREA OF REINFORCEMENT PROVIDED SHALL BE AT LEAST 0.125 IN<sup>2</sup>/FT IN EACH DIRECTION. THE MAXIMUM SPACING OF THIS REINFORCEMENT SHALL NOT EXCEED 18 INCHES.
16. THE DETAILS SHOWN IN THE PLAN VIEW FOR THE PRECAST CONCRETE ROUND STRUCTURES SHALL ALSO BE USED FOR CONVERTING MANHOLES TO CATCH BASINS.
17. SET CATCH BASIN TOPS ON 6" MINIMUM BRICK OR BLOCK LEVELING COURSE.
18. AFFIX PLAQUE TO ALL CATCH BASINS STATING "DUMP NO WASTE - DRAINS TO LONG ISLAND SOUND". COST FOR PLAQUE SHALL BE INCLUDED IN THE CONTRACT UNIT COST FOR CATCH BASINS.



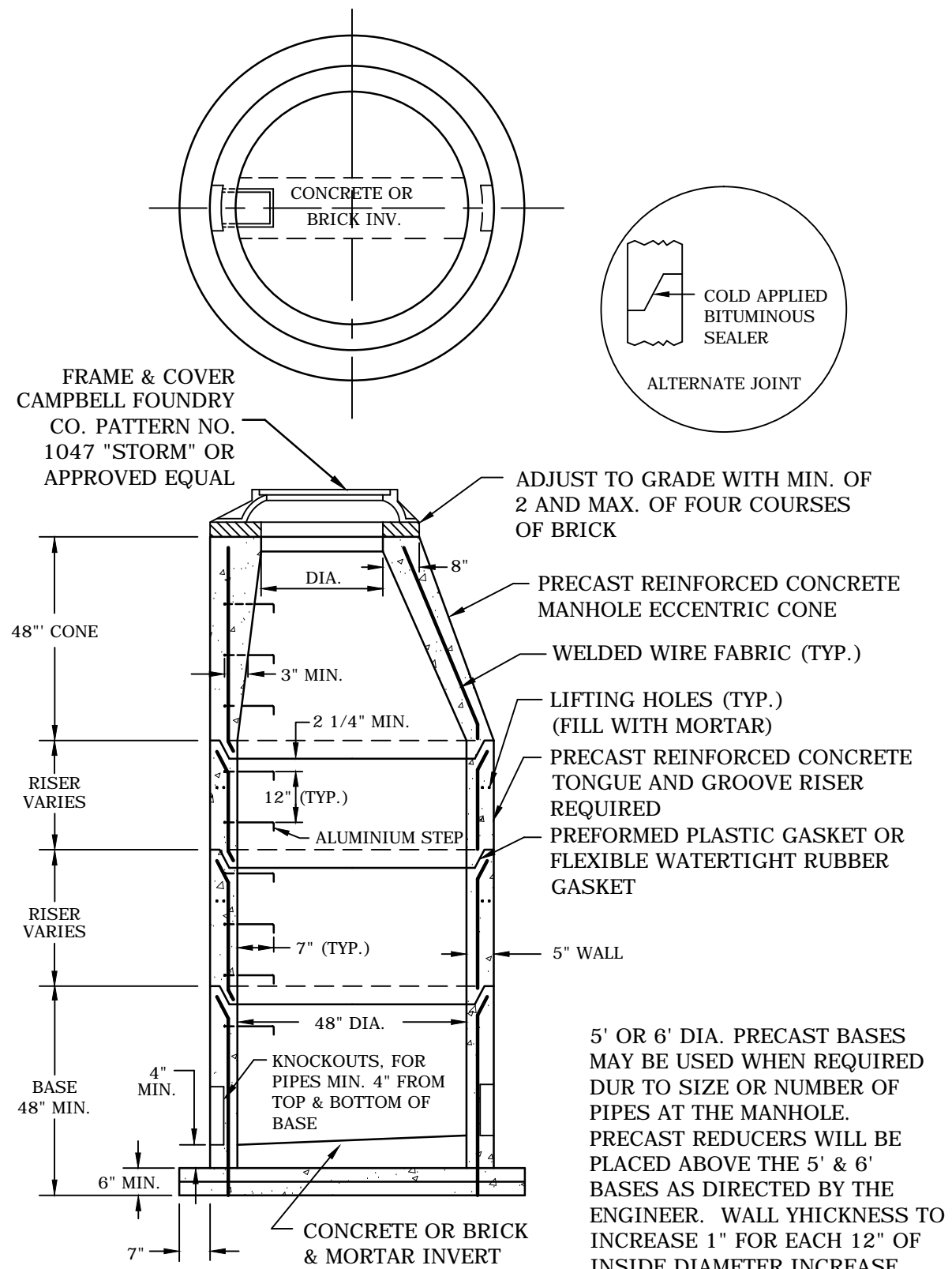
CONNECTICUT DEPARTMENT OF TRANSPORTATION

**TYPE "C" CATCH BASIN**

NO SCALE

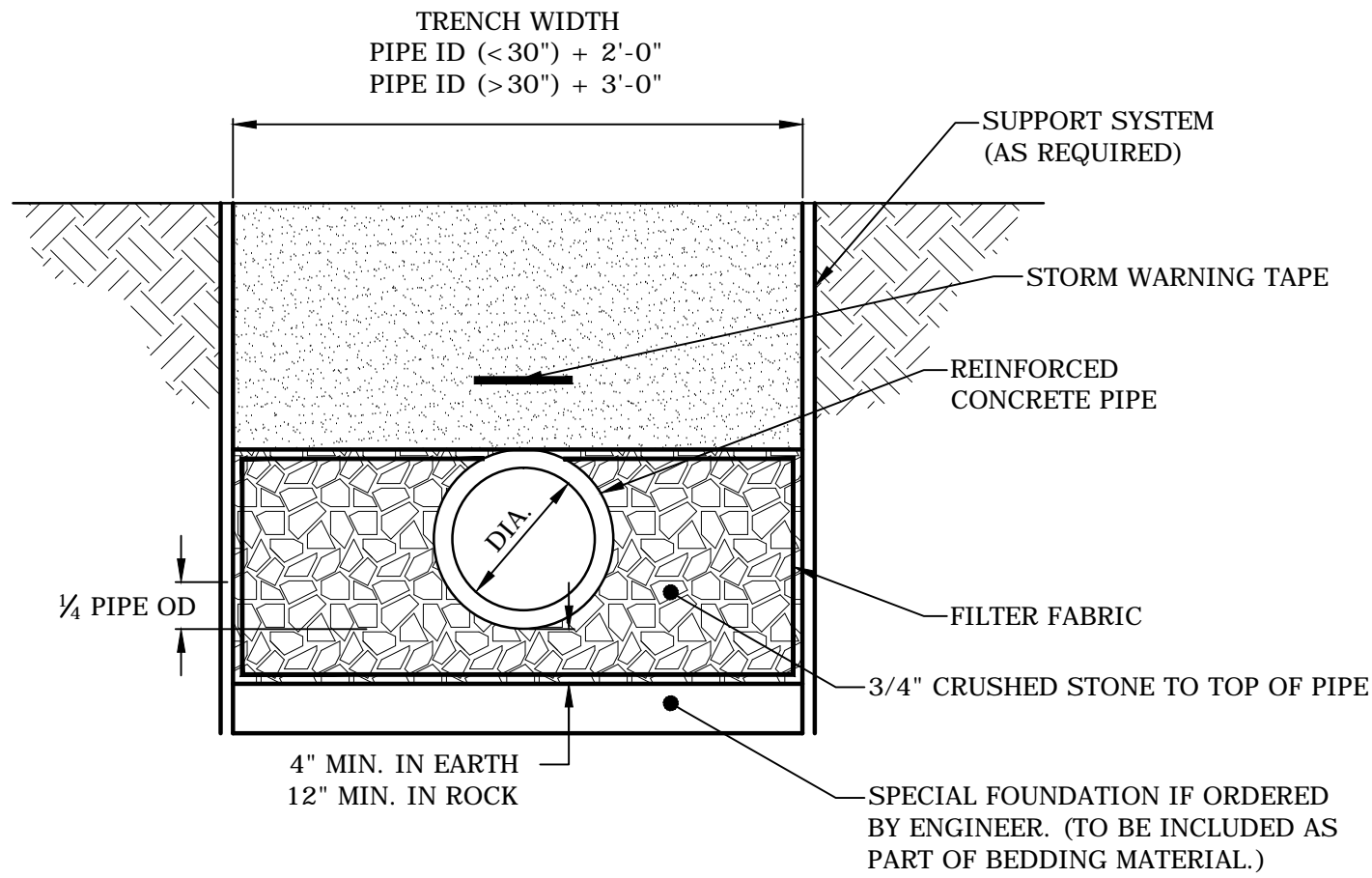
OFFICE OF THE TOWN ENGINEER TOWN OF TRUMBULL 5866 Main Street (203) 452-5050	
TYPE "C" CATCH BASIN DETAIL TRUMBULL, CONNECTICUT	
Scale: NTS	Date: 8/15/2014
Drawn by:	Grid:
Approved by:	Sheet: SW-01B

Aug 21, 2014-10:20am Plotted By: adm  
 Tighe & Bond, Inc. J:\T\T0196\24\_Town of Trumbull Standard Details\Storm\SW-02.dwg



**48" PRECAST MANHOLE**  
 NO SCALE

OFFICE OF THE TOWN ENGINEER TOWN OF TRUMBULL 5866 Main Street (203) 452-5050	
48" PRECAST MANHOLE TRUMBULL, CONNECTICUT	
Scale: NTS	Date: 8/15/2014
Drawn by:	Grid:
Approved by:	Sheet SW-02

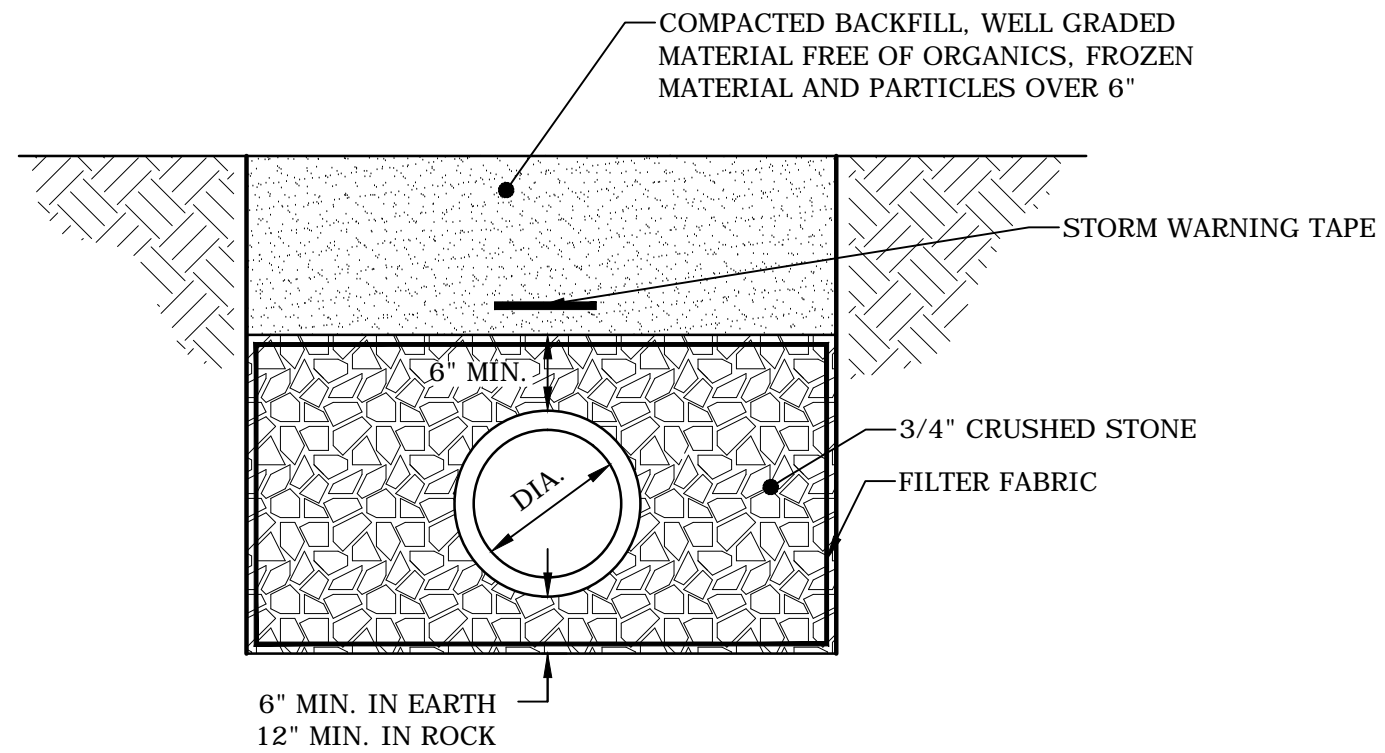


**CIRCULAR R.C.P. TRENCH BEDDING**  
 NO SCALE

Aug 21, 2014-10:20am Plotted By: adm  
 Tighe & Bond, Inc. J:\T\10196\24\_Town of Trumbull Standard Details\Storm\SW-03.dwg

OFFICE OF THE TOWN ENGINEER TOWN OF TRUMBULL 5866 Main Street (203) 452-5050	
CIRCULAR R.C.P. TRENCH BEDDING DETAIL TRUMBULL, CONNECTICUT	
Scale: NTS	Date: 8/15/2014
Drawn by:	Grid:
Approved by:	Sheet: SW-03

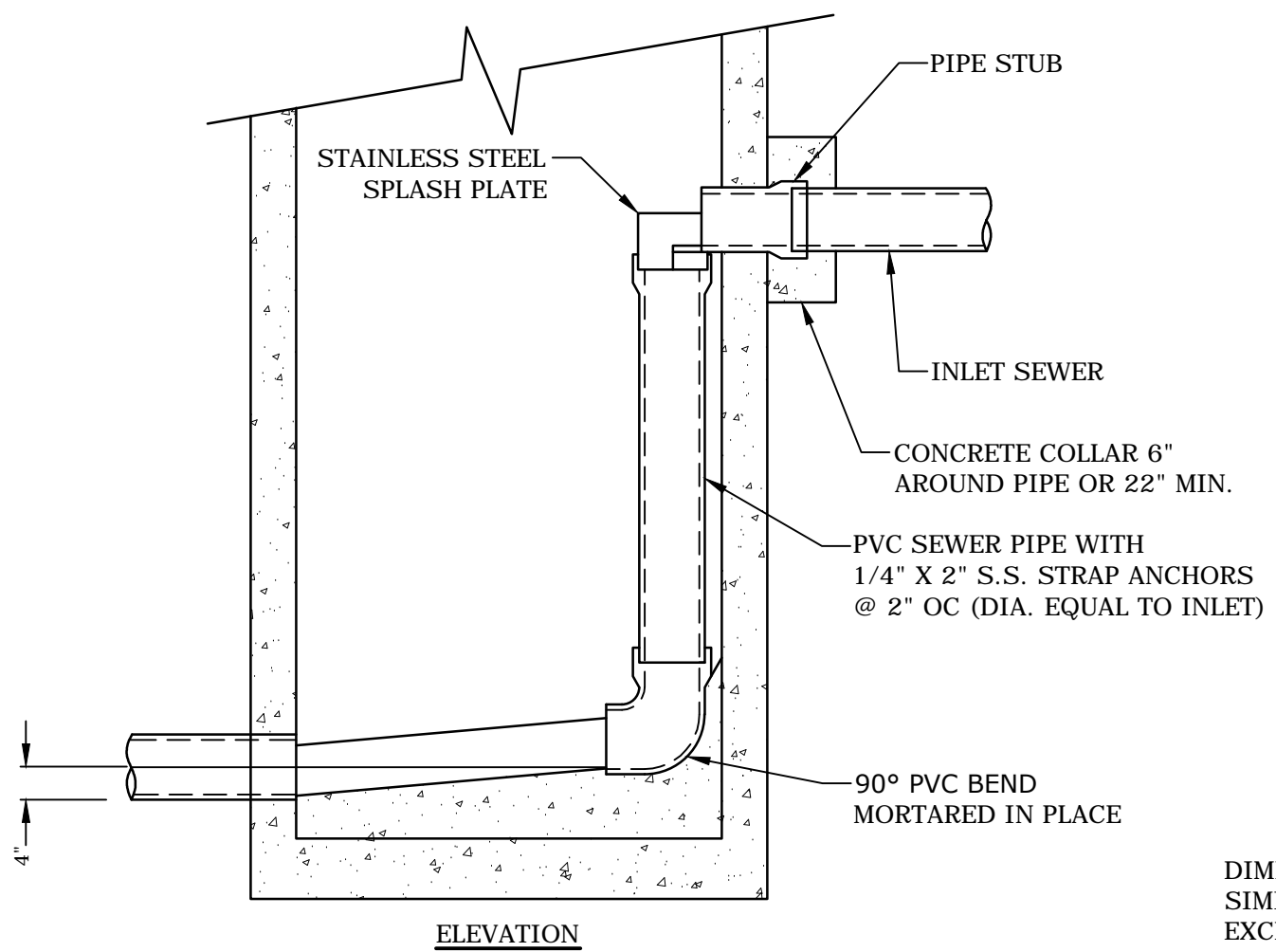
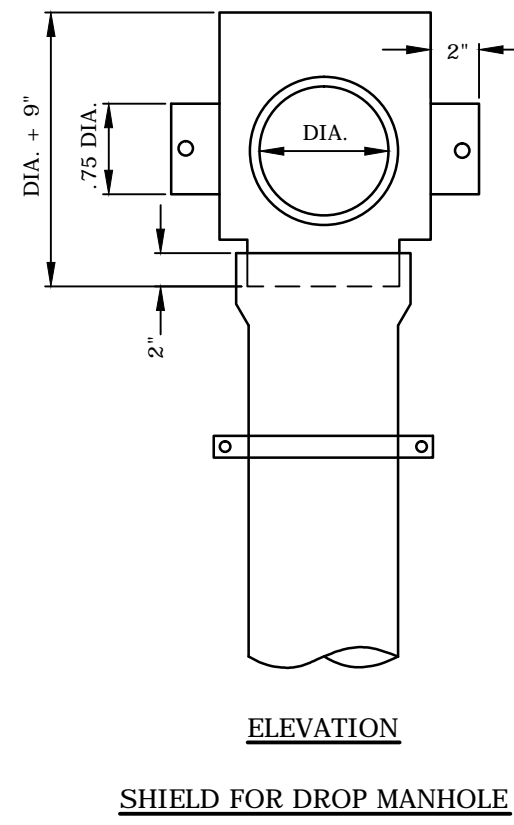
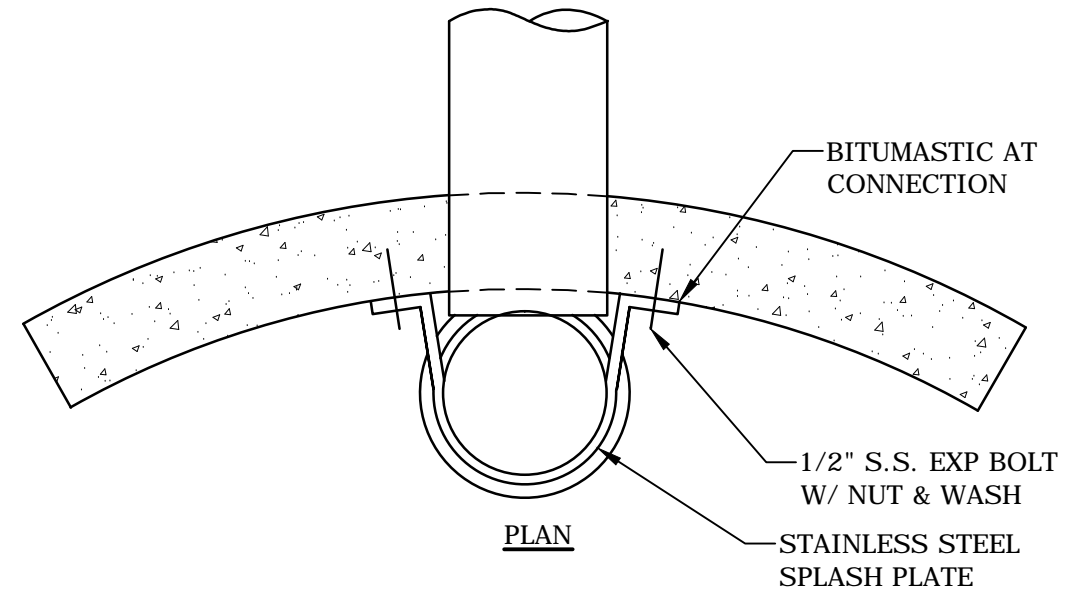
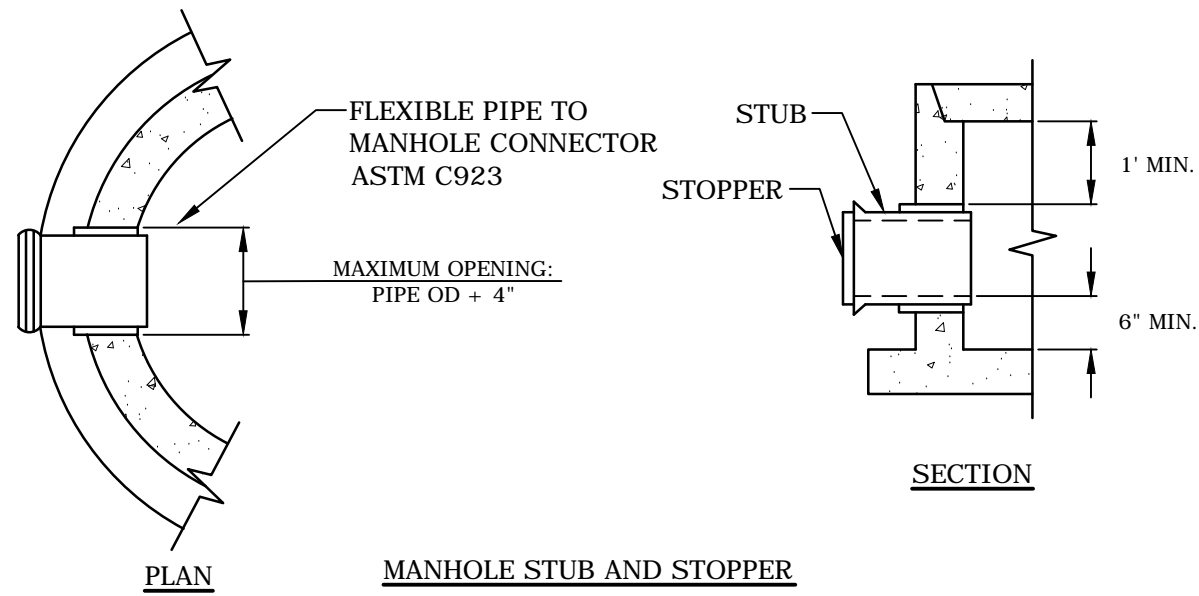
Aug 21, 2014-10:20am Plotted By: adm  
Tighe & Bond, Inc. J:\T\10196\24\_Town of Trumbull Standard Details\Storm\SW-04.dwg



**SDR-35 TRENCH BEDDING DETAIL**

NO SCALE

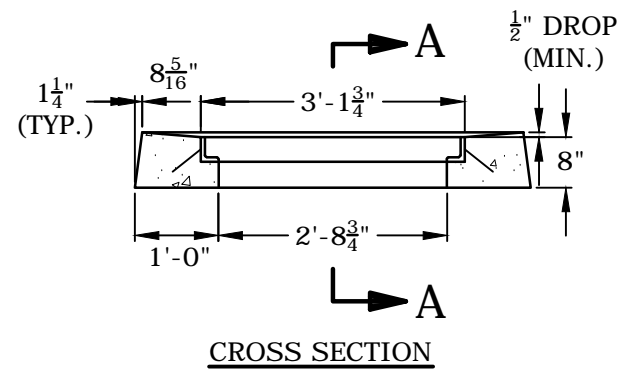
OFFICE OF THE TOWN ENGINEER TOWN OF TRUMBULL 5866 Main Street (203) 452-5050	
HDPE TRENCH BEDDING DETAIL TRUMBULL, CONNECTICUT	
Scale: NTS	Date: 8/15/2014
Drawn by:	Grid:
Approved by:	Sheet: SW-04



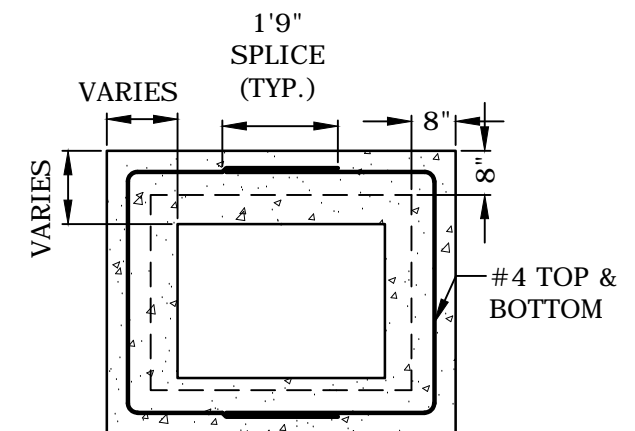
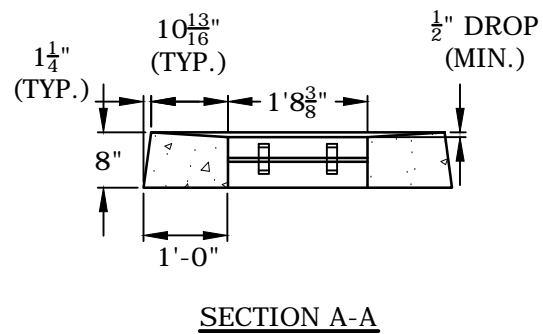
DIMENSIONS OF DROP INLET ARE SIMILAR TO THAT OF THE TYPICAL MANHOLE EXCEPT AS NOTED OTHERWISE

**INSIDE DROP MANHOLE**  
NO SCALE

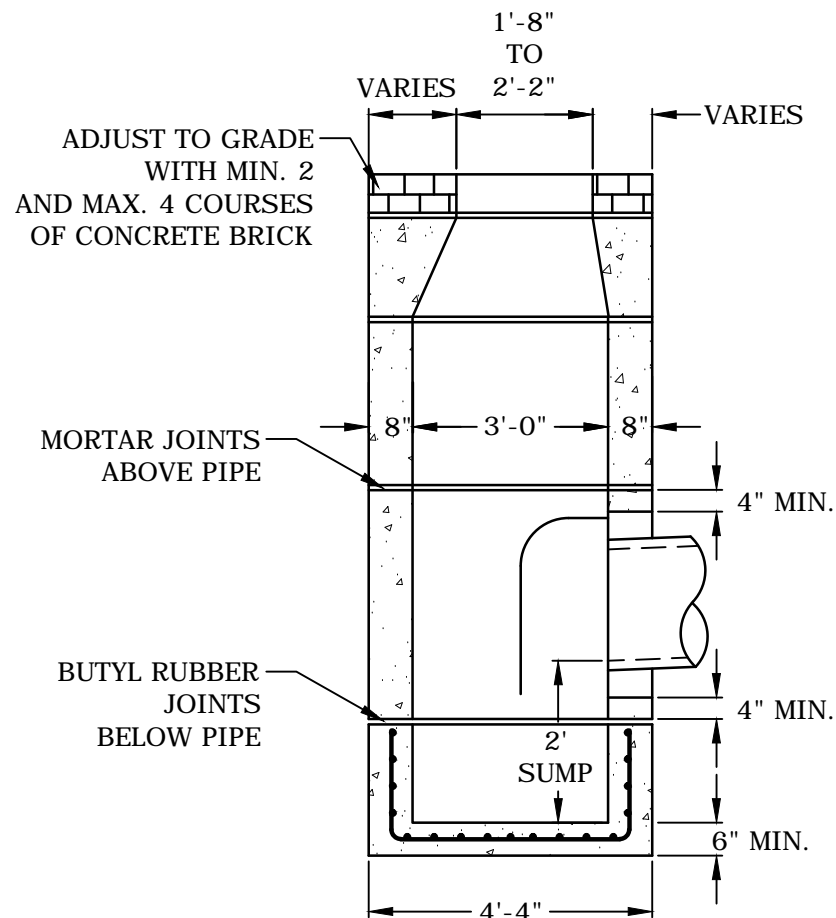
OFFICE OF THE TOWN ENGINEER TOWN OF TRUMBULL 5866 Main Street (203) 452-5050	
INSIDE DROP MANHOLE DETAIL TRUMBULL, CONNECTICUT	
Scale: NTS	Date: 8/15/2014
Drawn by:	Grid:
Approved by:	Sheet: SW-05



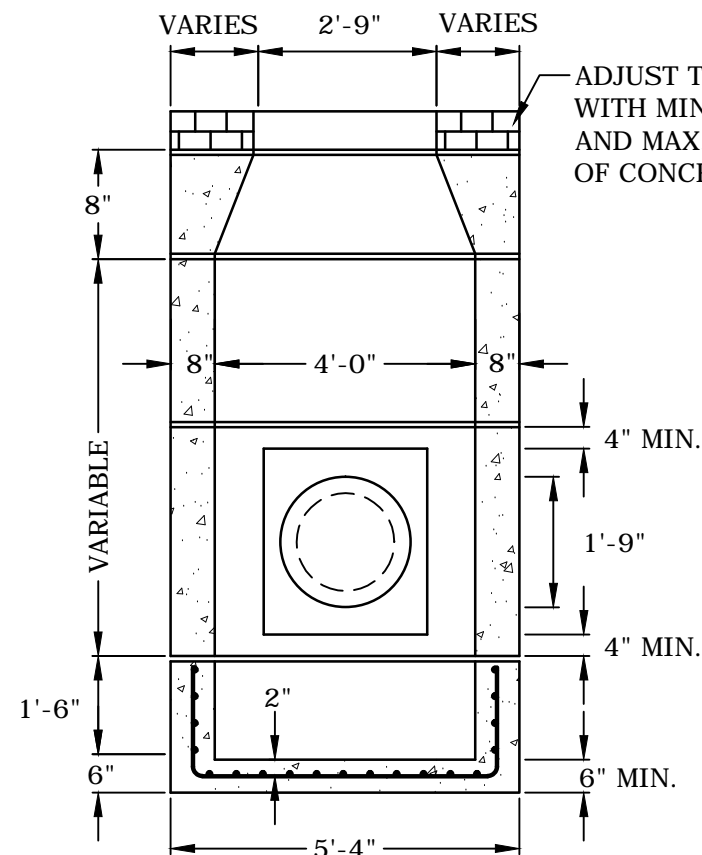
USE GALVANIZED GRATE & FRAME



REDUCER SECTION (TYP.)



INSTALL BELL TRAP ON PIPE OUTLET

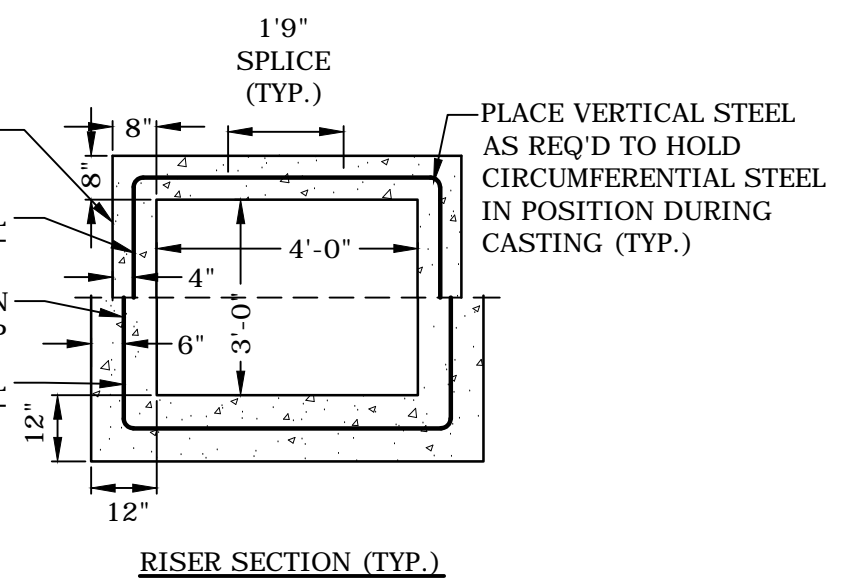


CONNECTICUT DEPARTMENT OF TRANSPORTATION

**TYPE "C-L" CATCH BASIN**

NO SCALE

CATCH BASINS 10' DEEP OR LESS  
 MINIMUM CIRCUMFERENTIAL STEEL AREA SHALL BE 0.20 IN<sup>2</sup>/FT  
 CATCH BASINS GREATER THAN 10' DEEP AND LESS THAN 20' DEEP  
 MINIMUM CIRCUMFERENTIAL STEEL AREA SHALL BE 0.20 IN<sup>2</sup>/FT



RISER SECTION (TYP.)

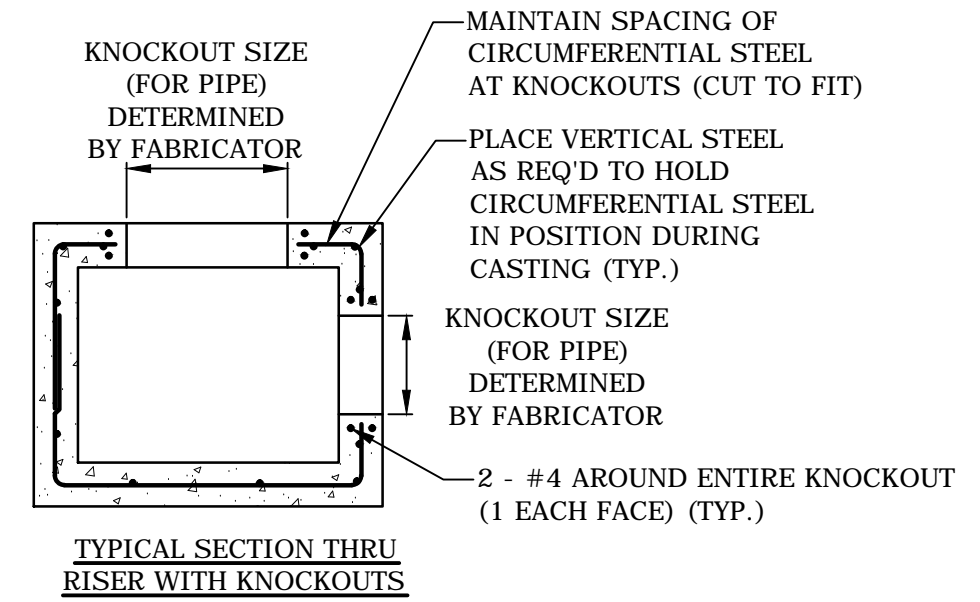
OFFICE OF THE TOWN ENGINEER  
 TOWN OF TRUMBULL  
 5866 Main Street (203) 452-5050

TYPE "C-L" CATCH BASIN DETAIL  
 TRUMBULL, CONNECTICUT

Scale: NTS	Date: 8/15/2014
Drawn by:	Grid:
Approved by:	Sheet: SW-06A

NOTES:

1. REINFORCEMENT SHALL CONFORM TO ASTM A615, GRADE 60.
2. DETAILS ON THIS SHEET SHOW STANDARD REINFORCEMENT. WELDED WIRE FABRIC WITH AN AREA EQUAL TO OR GREATER THAN THE REINFORCING SHOWN MAY BE SUBSTITUTED.
3. ALL LAP SPLICES, DEVELOPMENT LENGTHS, BENDS FOR REINFORCEMENT, AND WELDED WIRE FABRIC SHALL CONFORM TO AASHTO STANDARD SPECIFICATIONS FOR HIGHWAY BRIDGES.
4. ALL REINFORCEMENT SHALL HAVE A MINIMUM CLEAR COVER OF 2", EXCEPT FOR BENEATH BOTTOM REINFORCEMENT IN TOP SLABS, WHERE THE MINIMUM MAY BE 1 1/2"
5. MINIMUM CONCRETE COMPRESSIVE STRENGTH FC'= 4,000PSI SHALL BE OBTAINED BEFORE SHIPPING.
6. BASES AND RISERS AT A DEPTH OF 20' AND GREATER SHALL BE DESIGNED BY THE CONTRACTOR AND WORKING DRAWINGS SHALL BE SUBMITTED TO THE ENGINEER FOR REVIEW.
7. SEE STANDARD DRAWING 507-K FOR CATCH BASIN FRAMES AND GRATES.
8. FOR DOT MAINTENANCE PERSONNEL, RISERS MAY BE PREFABRICATED WITH PIPE OPENINGS IN ALL FOUR WALLS. ADEQUATE REINFORCING AROUND PIPE OPENINGS TO CONFORMING TO THESE PLANS SHALL BE PROVIDED. ANY RISERS USED WHERE A PIPE OPENING IS TO REMAIN IN PLACE MUST BE FORMED UP WITH BRICK AS DIRECTED BY THE ENGINEER.
9. RISERS SHALL NEVER HAVE CORNER PIPE ENTRIES. WHERE THE ALIGNMENT OF THE PIPE WITH RESPECT TO THE CORNER OF THE CATCH BASIN CANNOT BE CHANGED, A ROUND STRUCTURE CONFORMING TO ASTM C478 SHALL BE USED. REINFORCING FOR THE ROUND TOP SLAB WITH A RECTANGULAR OPENING SHALL CONFORM TO DETAILS SHOWN HERE.
10. ALL PIPE OPENINGS SHALL BE CLOSED USING MATERIALS WHICH CONFORM TO STATE OF CONNECTICUT STANDARD SPECIFICATIONS SECTION M.08.02. IF THE ENGINEER DETERMINES THAT THE CLOSURE OF ANY PIPE OPENING IS UNSATISFACTORY, THE CONTRACTOR SHALL RECLOSE SAID OPENING AT NO ADDITIONAL COST TO THE STATE. KNOCKOUTS FOR PIPE OPENINGS SHALL NOT RESULT IN A REDUCED WALL THICKNESS.
11. THE LATEST STATE OF CONNECTICUT STANDARD SPECIFICATIONS AND SUPPLEMENTALS SHALL GOVERN.
12. FOR ADDITIONAL DETAILS, SEE OTHER CATCH BASIN SHEETS.
13. WALL THICKNESS OF ALL CB'S OVER 10' DEEP SHALL BE INCREASED TO 12" THICK. INSIDE DIMENSION SHALL REMAIN THE SAME. (THE 12" THICKNESS SHALL START AFTER THE FIRST 10")
14. BUTYL RUBBER JOINT SEAL SHALL CONFORM TO AASHTO M-198 AND MORTAR SHALL CONFORM TO THE LATEST STATE OF CONNECTICUT STANDARD SPECIFICATIONS MATERIAL SECTION M11.04.
15. SHRINKAGE AND TEMPERATURE REINFORCEMENT SHALL BE PROVIDED IN THE TOPS OF SLABS. THE TOTAL AREA OF REINFORCEMENT PROVIDED SHALL BE AT LEAST 0.125 IN<sup>2</sup>/FT IN EACH DIRECTION. THE MAXIMUM SPACING OF THIS REINFORCEMENT SHALL NOT EXCEED 18 INCHES.
16. THE DETAILS SHOWN IN THE PLAN VIEW FOR THE PRECAST CONCRETE ROUND STRUCTURES SHALL ALSO BE USED FOR CONVERTING MANHOLES TO CATCH BASINS.



CONNECTICUT DEPARTMENT OF TRANSPORTATION

**TYPE "C-L" CATCH BASIN**  
NO SCALE

OFFICE OF THE TOWN ENGINEER TOWN OF TRUMBULL 5866 Main Street (203) 452-5050	
TYPE "C-L" CATCH BASIN DETAIL TRUMBULL, CONNECTICUT	
Scale: NTS	Date: 8/15/2014
Drawn by:	Grid:
Approved by:	Sheet: SW-06B

Aug 21, 2014 10:20am Plotted By: adm Tighe & Bond, Inc. J:\T\10196\24\_Town of Trumbull Standard Details\Details\Storm\SW-06.dwg